



WARDROBE & BATH SPECIALTIES



## ABOUT US

For over 30 years, Wardrobe & Bath Specialties has innovated, designed and manufactured the highest quality shower and wardrobe products in the industry. Our products are built to last and designed to be installer friendly. We are dedicated to providing our customers with an exceptional product at a competitive price. With our knowledgeable customer service team and staff, we are able to service customers throughout California, Nevada, Arizona and Hawaii. We own and operate our own fleet of trucks and promise to make an efficient, safe delivery of your product in the shortest turn-around time possible. Our skilled customer service team can assist you with multiple configuration options, supply custom glass patterns & finishes, or help you choose from our extensive inventory of standard products. Our commitment is to provide each and every customer with a great product and service they can trust.



## OUR PRODUCTS

### SHOWER DOORS

- WBS shower doors combine quality, style and functionality
- Installer-Friendly
- All glass can be ordered with EnduroShield™ Protection, available upon request
- Several different models of shower and bath enclosures, glass sizes and finish options available



### WARDROBE DOORS

- WBS wardrobe doors are made of the highest quality materials
- Our innovative design is both stylish and built to last using the thickest aluminum extrusions in the industry, precision rollers, mohair interior tracks, and a variety of finish options



### HEAVY GLASS & HARDWARE

- 3/8" and 1/2" glass in a wide range of sizes
- Heavy Duty & Standard Hinges
- Compression Clips, Notched and Notchless
- Towel Bars
- Pull Handles
- Headers & U-Channels
- Knobs and other accessories



## OUR MISSION

“TO PROVIDE OUR CUSTOMERS WITH QUALITY PRODUCTS, EXCEPTIONAL CUSTOMER SERVICE AND VALUE THEY CAN TRUST.”

-WARDROBE & BATH SPECIALTIES

## WHEN YOU PLACE YOUR ORDER

---

### ORDER CONFIRMATIONS

- We will not let you purchase anything until we ensure your order is right. Our trained customer service representatives can give you recommendations on the glass size you need to properly fit the opening. Our customer service teams are ready to inform you of our extensive inventory and provide you with standard glass sizes versus custom sizes, saving you money.
- Once your order is placed, it goes through a secondary review by our experienced warehouse team to ensure that the unit is appropriate for the application, the glass heights and widths are correct, and that our warehouse is fully equipped to handle your order in terms of our inventory. We use customer drawings and measurements throughout the fabrication process to ensure accuracy.
- Our highly skilled customer service team carries with them years of experience in the industry, with many having been with us for 10 years or more. We also have multiple bilingual team members to better serve our Spanish speaking customers.

WARDROBE & BATH SPECIALTIES  
PROMISES TO MAINTAIN QUALITY CONTROL  
AT EVERY STEP OF OUR PROCESS

## WHEN WE FILL YOUR ORDER

### GLASS INSPECTIONS

- Every piece of glass that comes through the WBS warehouse is thoroughly inspected for chips, scratches, knicks or flaws of any kind using an illuminated back-light rack system. If the glass has any flaw, it is immediately taken out of production and a replacement is ordered. If your glass is taken out of distribution, one of our customer service representatives will contact you with a new estimated delivery date.
- After inspection, all custom and 3/8" glass is carefully bagged and protective corners are added.

### METAL EXTRUSIONS

- WBS manufacturers metal extrusions that are specifically designed for an easy and quick installation.

### FINAL INSPECTIONS

- Every order has a cut sheet that is double checked by the fabricator to ensure your unit is ready to install without issue.
- In addition to our hands-on inspection, we use technologically advanced 360° degree cameras to continually ensure extrusions maintain the required specs and that everything happening in the warehouse upholds our high quality standards.
- Every unit is checked again by the truck loader and confirmed against your order before leaving our warehouse.

### TRUCK DELIVERY ASSURANCE

- WBS owns and operates our own fleet of delivery trucks designed to safely and efficiently transport glass and wardrobe doors. Our team-drivers are on route delivering to our customers in California, Nevada and Arizona typically within 1-3 business days. We can confirm the location of our drivers at all times using GPS systems. However, if anything keeps us from delivering your product as scheduled, our dedicated customer service team is guaranteed to make courtesy calls to keep you informed on the estimated delivery time of your product.



# GLASS CARE & MAINTENANCE

## PROPER CLEANING

- Daily or occasional use of a shower enclosure will cause residue build-up on both the glass and aluminum. To maintain the shower enclosure's shine and clarity, we recommend that all glass and aluminum be wiped down after each use. The best tools to use are a squeegee and a microfiber cloth. After the glass is wiped down, it's best to wipe the aluminum with a towel and touch-up the glass. Occasionally, we also recommend you clean the glass with either an alcohol or ammonia based glass cleaner. These cleaners should also be safe for use on the aluminum, but always refer to the label for proper usage.

## ABRASIVE CLEANER

- We do not recommend using abrasive cleaners that can scratch or cause defects to either the glass or the aluminum. We only recommend using cleaners that are intended to be used on glass or aluminum. That is why we created WBS professional glass cleaner specially formulated to care for your glass.

## WBS PROFESSIONAL GLASS CLEANER

- WBS Glass Cleaner is custom-formulated to professionally clean and polish your shower doors, mirrored wardrobe doors, windows and windshields without leaving any film behind.
- For institutional, commercial and industrial use
- Contains no ozone depleting chemicals



## WBS GLASS CLEANER

- SHOWER DOORS
- MIRRORED WARDROBE DOORS
- WINDOWS
- MIRRORS
- WINDSHIELDS

## ENDUROSHIELD™

- WBS offers EnduroShield™, a professional strength glass coating applied by WBS or available in an easy to use DIY (do-it-yourself) kit. EnduroShield™ is a revolutionary invisible treatment that repels water, soap scum, grime and dirt on glass, tiles and stainless steel which will reduce your cleaning time by up to 90%. Water will bead on the surface demonstrating its repellent nature. When professionally applied by WBS, EnduroShield™ provides a 10-year performance warranty. When applied using the DIY kit, EnduroShield™ provides a 3-year performance warranty. EnduroShield™ is independently tested and certified for durability. The largest glass fabricators and manufacturers around the world rely on EnduroShield™ as the industry-leading solution. Ask our customer service representatives for more information on how to get EnduroShield™ protection on your glass.



- REVOLUTIONARY SOLUTION FOR GLASS
- REPELS WATER, SOAP SCUM & GRIME
- REDUCES CLEANING TIME BY UP TO 90%

✓ 10 YEAR WARRANTY

WHEN PROFESSIONALLY APPLIED BY WBS



✓ 3 YEAR WARRANTY

WHEN APPLIED USING THE DIY KIT

# CERTIFIED SIKA DISTRIBUTOR

## WBS IS YOUR SIKA® DISTRIBUTOR

- WBS makes an effort to provide our customers with the best quality products available in the industry, giving our customers the tools they need to properly install a high-quality finished product. With all of the products we provide, it only makes sense to include the leading brand name in glazing sealants, Sika®.
- WBS is the only certified Sika® distributor in Northern California and we carry the Sika® line of residential and commercial glazing products in a variety of colors.

## WHY USE SIKA®?

- Since 1937, Sika® Corporation has been providing product solutions for the most demanding requirements concerning sealing and bonding within the glass industry. Today, the Sika® brand of products is held in the highest regard by the professional glazier.
- Sika® has been legendary in the development and delivery of Sikaflex® polyurethane systems that function with the highest degree of reliability available.
- Now, WBS is proud to offer a full line of the top Sika® products designed for the glass industry like Sikaflex® polyurethane, Sikasil® silicones, and SikaHyflex® hybrid flat glass sealant.
- All Sika® products are Made in the USA.

## NEW SIKAFLEX® MIRROR GRIP

- WBS now carries Sikaflex® Mirror Grip, a one-component, moisture-cure, instant grab, polyurethane adhesive designed for use in bonding mirrors. This product is ideal for instantly securing vertical mirrors in place.



- Sikaflex® Mirror Grip Features:
- Low odor
- High durability
- Non-corrosive
- Waterproof after cure
- Flexible, to allow movement between substrates

Picture of Sikaflex® Mirror Grip on left and Gunther Ultra Bond® on right.  
Slip down test 4 minutes after installation.



## WHAT SIKA® PRODUCT TO USE

APPLICATIONS	RECOMMENDED SIKA PRODUCT	PACKAGING	DESCRIPTION & SIMILAR COMPETING PRODUCTS
Shower & Tub Enclosures	Sikasil® N Plus US	295 ml. ctg/24 per case	Neutral Cure Silicone Fungicide Added <b>Most like Dow 799, 739, 832, GE SCS 1800, RTV120, Tremco 600, TremPro 645</b>
	Sikasil® GP	295 ml. ctg/24 per case	Acetoxy Cure Silicone Fungicide Added <b>Most like CRL 33S, Dow 999A, GE SCS 1200 &amp; 1000, RTV100, Tremsil 200, Pecora 860</b>
Commercial Store Front & Entrances	Sikasil® WS-295	295 ml. ctg/600 ml. foil	High Performing Neutral Cure Silicone <b>Most like Dow 795, 995, 756, SMS, GE Silpruf 2000, 9000NB, Tremco Spectrum 2&amp;3, Pecora 895</b>
	Sikaflex® 201 T	300 ml. ctg	Textured Polyurethane <b>Most like Vulkem 116, CRL M66 Textured</b>
	Sikaflex® 201 US	300 ml. ctg/600 ml. foil	Smooth Polyurethane <b>Most like Tremco Dymonic, Sonneborn NP1, CRL M64</b>
Residential & Commercial Windows	NEW Sikaflex® Mirror Grip	300 ml. ctg	Advanced Polyurethane <b>Most like CRL Palmer Qwikset, Mirror-Mastic</b>
	Sikaflex® 219 LM	300 ml. ctg/600 ml. foil	Smooth, Low-Modulus Polyurethane <b>Most like Vulkem 921</b>
	Sikaflex® 201 T	300 ml. ctg	Textured Polyurethane <b>Most like Vulkem 116, CRL M66 Textured</b>
	Sikaflex® 201 US	300 ml. ctg/24 per case	Neutral Cure Silicone Fungicide Added <b>Most like Dow 799, 739, 832, GE SCS 1800, RTV120, Tremco 600, TremPro 645</b>
Glass Edge Sealing	Sikasil® N Plus US	295 ml. ctg/24 per case	Neutral Cure Silicone Fungicide Added <b>Most like Dow 799, 739, 832, GE SCS 1800, RTV120, Tremco 600, TremPro 645</b>
	Sikasil® GP	295 ml. ctg/24 per case	Acetoxy Cure Silicone Fungicide Added <b>Most like CRL 33S, Dow 999A, GE SCS 1200 &amp; 1000, RTV100, Tremsil 200, Pecora 860</b>
General Purpose Glazing	Sikasil® GP	295 ml. ctg/24 per case	Acetoxy Cure Silicone Fungicide Added <b>Most like CRL 33S, Dow 999A, GE SCS 1200 &amp; 1000, RTV100, Tremsil 200, Pecora 860</b>
General Purpose Glazing / Hybrid Flat Glass Sealant	Sikaflex® 510 AM50	300 ml. ctg/24 per case	One-Component, Low Modulus, Hybrid Flat Glass Sealant <b>Meets ASTM C920, Class 50, UV Resistant, Paintable, Elongation: 700%, Skin time: 60 minutes</b> <b>Most like NONE</b>



BUILDING TRUST



## LIMITED FIVE YEAR WARRANTY

---

Wardrobe & Bath Specialties guarantees its product to be free of defects in material and workmanship for five years from the original date of purchase. This warranty extends to the original purchaser and the first consumer owner only.

If a product fails due to defects in material or workmanship during the warranty period, we will, at our option, repair it, replace it with the most nearly identical product which we sell at the time or refund the original purchase price. Wardrobe & Bath Specialties will not be liable for any labor charges or freight costs incurred in connection with repair or replacement of a product.

This warranty does not cover:

- Damage resulting from negligence, misuse, abuse or accident occurring after installation
- Mirror or glass breakage
- Damage resulting from foreign matter in the bottom track or on the back or edges of the product
- Damage due to use outside normal architectural requirements
- Defects resulting from any modification made by anyone other than the manufacturer

Wardrobe & Bath Specialties sole responsibility is as set forth above. In no event shall Wardrobe & Bath Specialties be liable for incidental or consequential damages. Some states do not allow the exclusion or limitation of incidental or consequential damages, so the above limitation or exclusion may not apply to you.

If it becomes necessary for you to request service under this warranty, please call or email Wardrobe & Bath Specialties and include a brief description of the problem, your name, address and contact number. We will determine whether the claim is within warranty and contact you with shipping instructions if appropriate.

**Wardrobe & Bath Specialties**  
**Phone: (800) 540-4085**  
**Email: [info@wardrobeandbath.com](mailto:info@wardrobeandbath.com)**

We reserve the right to make changes and improvements in our products without incurring any obligation to similarly after products previously purchased.

This limited warranty is in lieu of all other warranties, expressed or implied, including the implied warranties of fitness and merchantability. There are not warranties which extend beyond the description on the face hereof. Some states do not allow limitations on how long an implied warranty lasts, so the above limitation may not apply to you. This warranty gives you specific legal rights and you may also have other rights which vary from state to state.

## POLICY & TERMS

---

- All prospective customers must go through an application and approval procedure. After a prospective customer has been approved, they will be issued an account number, username and password so that they may begin purchasing products and access our website ordering system. To start the application process, please contact us.
- Wardrobe & Bath Specialties delivers our product via our own delivery trucks in the states of California, Nevada and Arizona. Our delivery trucks generally leave in the evening and make the majority of their deliveries during the late night hours. Our customers must furnish a key to their place of business or provide a secure place to leave our product, as most of our deliveries are made during non-business hours.
- We also ship our products via common carrier upon request or for customers outside our normal delivery areas. This is an additional charge and delivery schedules may vary depending on the shipping method.

## WATER-TIGHT

---

- Our shower enclosures are designed to keep water inside the unit when properly installed and under normal shower conditions. With this stated, it is important to understand that our units are not water-tight or leak-proof. If there is excessive water use or water is sprayed directly at the unit, there is the possibility of leaking. These situations do not constitute normal shower conditions and should be avoided.

## TOWEL BAR

---

- Any towel bar that is installed on one of our units, should never, under any circumstances be used as a grab bar. The towel bar should not be hung from or pulled on with excessive force. Doing so could result in glass breakage or serious injury.

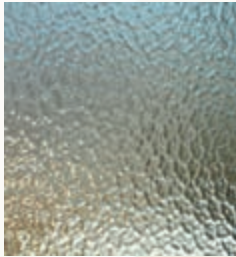
## EXCESSIVE FORCE

---

- The use of excessive force on the shower enclosure could cause glass breakage or serious injury. Our units are designed to open or slide easily with a limited amount of force.

## GLASS TEXTURES

- WBS carries thousands of glass sizes and many glass textures in-stock. Below are the most common glass textures for our tub and shower enclosures and heavy glass units. However, WBS can always work with you to design a custom unit with even more glass textures available upon request.



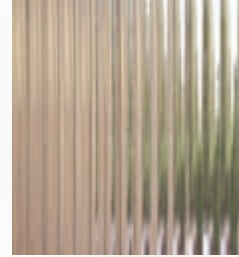
Aquatex



Obscure



Rain



Narrow Reed



Starphire



Clear



## HARDWARE FINISHES

- WBS carries the most popular finishes used to complete the look of our tub and shower enclosures and heavy units. These options are standard for most units.



Polished Chrome



Brushed Nickel



Oil Rubbed Bronze



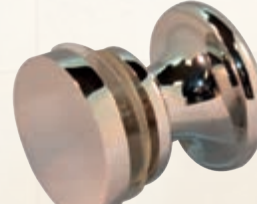
Matte Black



Polished Brass



Antique Brass



Polished Nickel



Satin Nickel

# TUB & SHOWER ENCLOSURES

## WBS TUB & SHOWER ENCLOSURE FEATURES

---

### INVENTORY

- We carry thousands of glass sizes in stock including varying door sizes and panels
- Our shower and tub enclosures come in a variety of beautiful glass textures including clear, obscure, rain, narrow reed and now aquatex for some units
- Every unit is available in our most popular anodized finishes Polished Chrome, Brushed Nickel, and Oil Rubbed Bronze with even more colors available for some units
- WBS designs our units to be installer friendly

### EXTRUSIONS

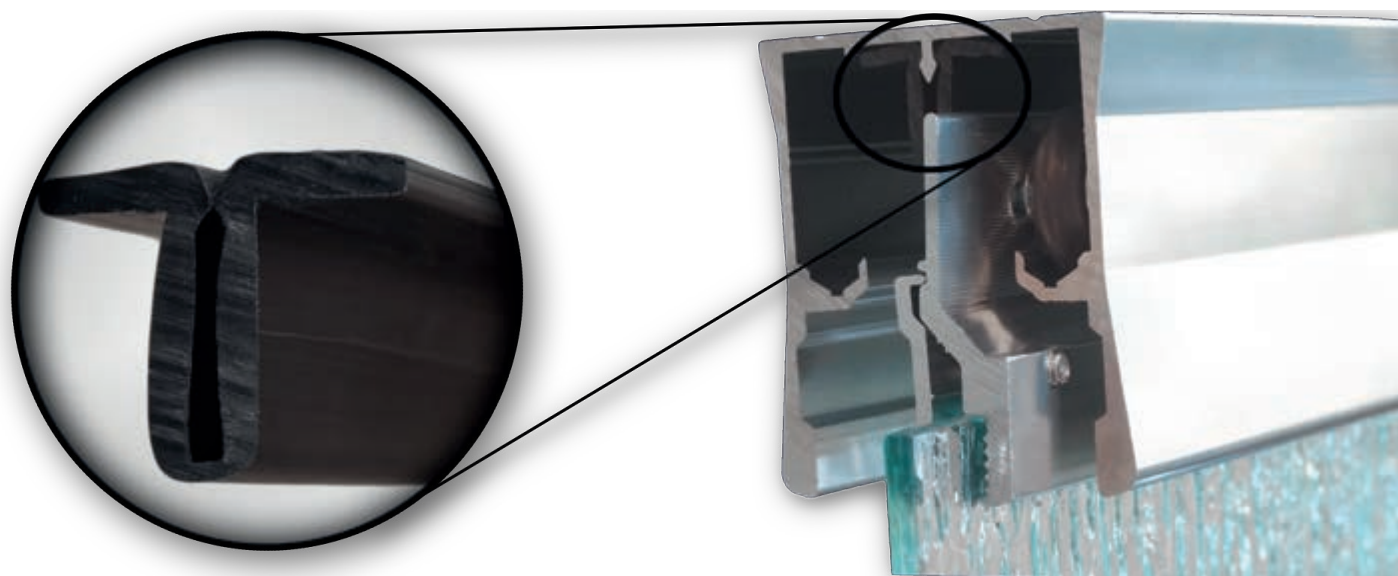
- All metal extrusions are polished or brushed on both the front & back side, giving every unit a quality, finished look that can be seen from any angle

### INSTALLER TOOLS

- Every TE/SE unit contains
  - #32 High Speed Steel Drill Bit
  - Apex Square Drive Bit #1, #2
  - Porcelain Bit
- Every Pivot Door unit contains
  - #32 High Speed Steel Drill Bit
  - Apex Square Drive Bit #1, #2

### ANTI-JUMP CHANNEL FOR SLIDING UNITS

- Designed to prevent your glass from coming off the track
- Available upon request on all TE/SE units



Anti-Jump Channel



# TUB & SHOWER ENCLOSURES

## TE-1000 FRAMELESS TUB ENCLOSURES



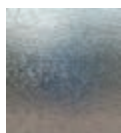
### FEATURES & BENEFITS

- 3/16" standard thick tempered glass
- Pencil polished edges
- Double towel bar
- Handle mounted on glass
- Available in custom glass sizes and textures
- List prices provided are for standard 3/16" thick glass in our most popular finishes including Polished Chrome, Brushed Nickel, Oil Rubbed Bronze and Matte Black
- For custom sized units, or units requiring specialty or non-stock glass, please contact customer service for pricing
- Pricing & availability is based on glass being in stock

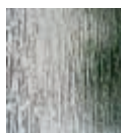
### GLASS TEXTURES



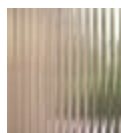
3/16" Clear



3/16" Obscure



3/16" Rain



1/4" Narrow Reed

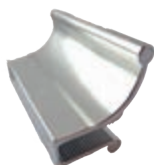
TE 1000 Header



TE 1000 Towel Bar



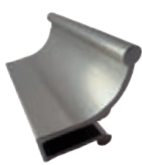
### AVAILABLE COLORS



Polished Chrome



Oil Rubbed Bronze



Brushed Nickel



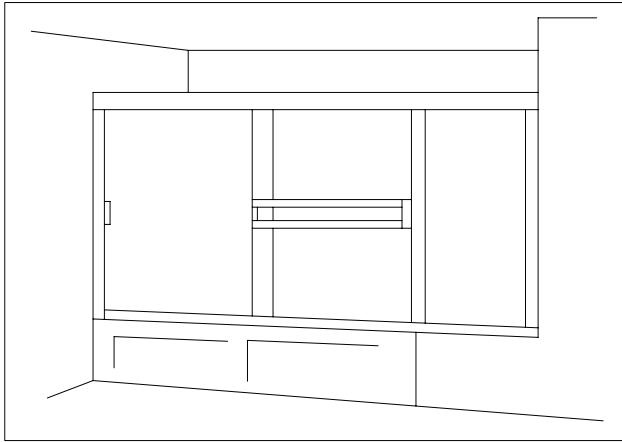
Matte Black

### WIDTH & HEIGHT OPTIONS

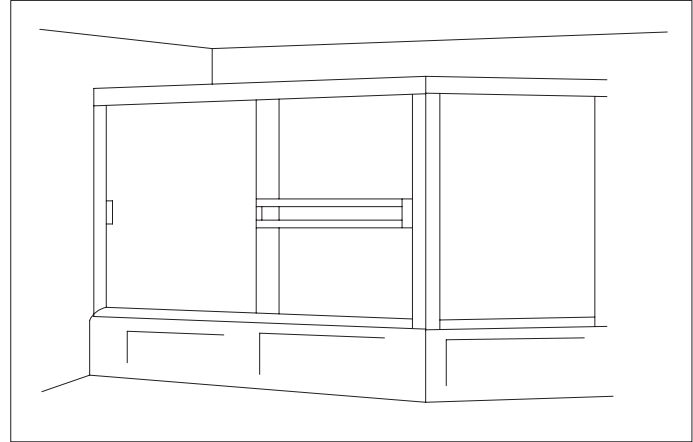
TE-1000		Chrome	Oil Rubbed Bronze	Brushed Nickel	Matte Black
Width x Height		List Price	List Price	List Price	List Price
57 1/2"	x 54 3/4"	\$197	\$278	\$278	\$278
57 1/2"	x 55 1/2"	\$197	\$278	\$278	\$278
42"	x 56 3/4"	\$197	\$278	\$278	\$278
48"	x 56 3/4"	\$197	\$278	\$278	\$278
54"	x 56 3/4"	\$197	\$278	\$278	\$278
56"	x 56 3/4"	\$197	\$278	\$278	\$278
60"	x 56 3/4"	\$197	\$278	\$278	\$278
66"	x 56 3/4"	\$209	\$297	\$297	\$297
72"	x 56 3/4"	\$242	\$344	\$344	\$344
60"	x 57 3/4"	\$197	\$278	\$278	\$278
60"	x 58 3/4"	\$218	\$310	\$310	\$310
57 1/2"	x 60 1/4"	\$218	\$310	\$310	\$310
60"	x 60 1/4"	\$218	\$310	\$310	\$310
57 1/2"	x 62 3/4"	\$218	\$310	\$310	\$310
60"	x 62 3/4"	\$218	\$310	\$310	\$310



## TE-1000A/A1/C FRAMELESS TUB ENCLOSURES WITH PANELS



TE 1000 A/A1



TE 1000 C

### GLASS TEXTURES



3/16" Clear    3/16" Obscure    3/16" Rain    1/4" Narrow Reed

### AVAILABLE COLORS



Polished Chrome    Oil Rubbed Bronze    Brushed Nickel    Matte Black

### FEATURES & BENEFITS

- 3/16" standard thick tempered glass
- Includes fixed panel(s)
- Pencil polished edges
- Double towel bar
- Handle Mounted on Glass
- Available in custom glass sizes and textures
- Available in different configurations
- For pricing, standard or custom, contact customer service

### WIDTH & HEIGHT OPTIONS

TE-1000A			TE 1000A1			TE 1000 C		
Width x Height			Width x Height			Width x Height		
72"	x	54 3/4"	84"	x	54 3/4"	60"	x	54 3/4"
72"	x	55 1/2"	84"	x	55 1/2"	60"	x	55 1/2"
72"	x	56 3/4"	84"	x	56 3/4"	60"	x	56 3/4"
72"	x	57 3/4"	84"	x	57 3/4"	60"	x	57 3/4"
72"	x	58 3/4"	84"	x	58 3/4"	60"	x	58 3/4"
72"	x	60 1/4"	84"	x	60 1/4"	60"	x	60 1/4"
72"	x	62 3/4"	84"	x	62 3/4"	60"	x	62 3/4"

These units can be ordered up to 72" Notched Panel Charge - \$25.00 Net Charge per Notched Panel.

# TUB & SHOWER ENCLOSURES

## SE-1000 FRAMELESS SHOWER ENCLOSURES



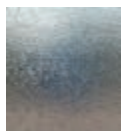
### FEATURES & BENEFITS

- 3/16" standard thick tempered glass
- Pencil polished edges
- Double towel bar
- Handle mounted on glass
- Available in custom glass sizes and textures
- List prices provided are for standard 3/16" thick glass in our most popular finishes including Polished Chrome, Brushed Nickel, Oil Rubbed Bronze and Matte Black
- For custom sized units, or units requiring specialty or non-stock glass, please contact customer service for pricing
- Pricing & availability is based on glass being in stock

### GLASS TEXTURES



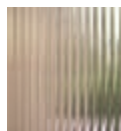
3/16" Clear



3/16" Obscure

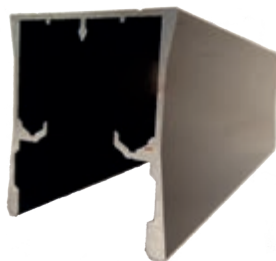


3/16" Rain



1/4" Narrow Reed

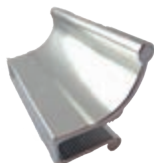
SE 1000 Header



SE 1000 Towel Bar



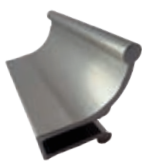
### AVAILABLE COLORS



Polished Chrome



Oil Rubbed Bronze



Brushed Nickel

**NEW**

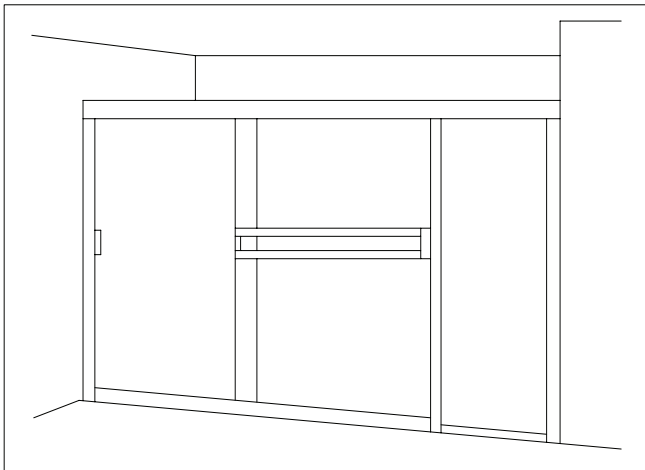


Matte Black

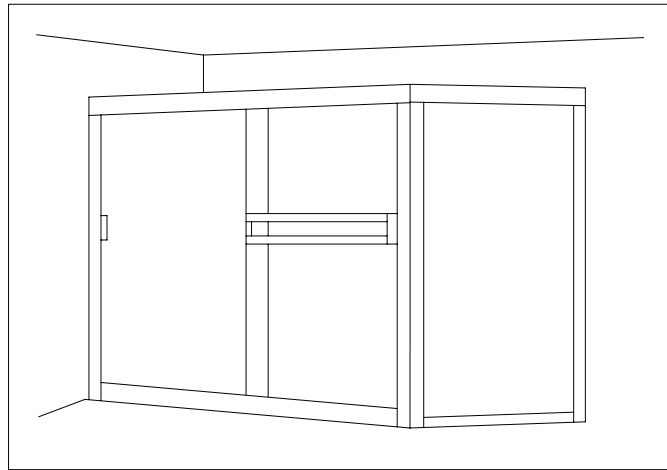
### WIDTH & HEIGHT OPTIONS

<u>SE-1000</u>	<u>Chrome</u>	<u>Oil Rubbed Bronze</u>	<u>Brushed Nickel</u>	<u>Matte Black</u>
<u>Width x Height</u>	<u>List Price</u>	<u>List Price</u>	<u>List Price</u>	<u>List Price</u>
44 1/2" x 65"	\$196	\$278	\$278	\$278
48" x 65 3/4"	\$196	\$278	\$278	\$278
57 1/2" x 65 3/4"	\$218	\$310	\$310	\$310
60" x 65 3/4"	\$218	\$310	\$310	\$310
48" x 67 3/4"	\$196	\$278	\$278	\$278
54" x 67 3/4"	\$218	\$310	\$310	\$310
57 1/2" x 67 3/4"	\$218	\$310	\$310	\$310
60" x 67 3/4"	\$218	\$310	\$310	\$310
42" x 70 3/4"	\$196	\$278	\$278	\$278
48" x 70 3/4"	\$200	\$284	\$284	\$284
54" x 70 3/4"	\$222	\$315	\$315	\$315
57 1/2" x 70 3/4"	\$222	\$315	\$315	\$315
60" x 70 3/4"	\$222	\$315	\$315	\$315
66" x 70 3/4"	\$234	\$332	\$332	\$332
72" x 70 3/4"	\$270	\$383	\$383	\$383

## SE-1000A/A1/C FRAMELESS SHOWER ENCLOSURES WITH PANELS



SE 1000 A/A1



SE 1000 C

### GLASS TEXTURES



3/16" Clear   3/16" Obscure   3/16" Rain   1/4" Narrow Reed

### AVAILABLE COLORS



Polished Chrome   Oil Rubbed Bronze   Brushed Nickel   Matte Black

### FEATURES & BENEFITS

- 3/16" standard thick tempered glass
- Includes fixed panel(s)
- Pencil polished edges
- Double towel bar
- Handle mounted on glass
- Available in custom glass sizes and textures
- Available in different configurations
- For pricing, standard or custom, contact customer service

### WIDTH & HEIGHT OPTIONS

<u>SE-1000A</u>			<u>SE 1000A1</u>			<u>SE 1000 C</u>		
<u>Width x Height</u>			<u>Width x Height</u>			<u>Width x Height</u>		
72"	x	65 3/4"	84"	x	65 3/4"	60"	x	65 3/4"
72"	x	67 3/4"	84"	x	67 3/4"	60"	x	67 3/4"
72"	x	70 3/4"	84"	x	70 3/4"	60"	x	70 3/4"

These units can be ordered up to the largest size listed. Notched Panel Charge - \$25.00 Net Charge per Notched Panel.

# TUB & SHOWER ENCLOSURES

## TE-1100 LIGHT FRAMED TUB ENCLOSURES



### FEATURES & BENEFITS

- These units are available with 1/8" clear and rain glass
- Features a single towel bar and handle that are attached to the frame around glass
- Pricing and availability is based on glass being in stock



TE 1100 Towel Bar

### GLASS TEXTURES



1/8" Clear



1/8" Rain

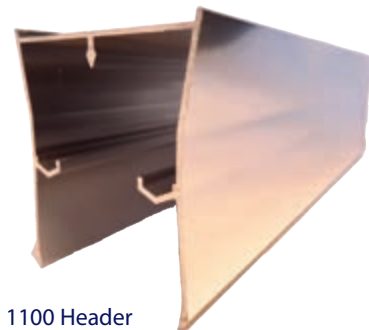
### AVAILABLE COLORS



Polished Chrome



Brushed Nickel



TE 1100 Header

### WIDTH & HEIGHT OPTIONS

<u>TE-1100</u> <u>Width x Height</u>	<u>Chrome</u> <u>List Price</u>	<u>Brushed Nickel</u> <u>List Price</u>
59 1/2" x 54 7/8"	\$324	\$393
58" x 56 7/8"	\$324	\$393
59 1/2" x 60 3/8"	\$324	\$393

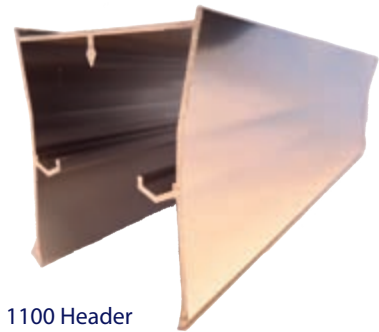
## SE-1100 LIGHT FRAMED SHOWER ENCLOSURES

### FEATURES & BENEFITS

- These units are available with 1/8" clear and rain glass
- Features a single towel bar and handle that are attached to the frame around glass
- Pricing and availability is based on glass being in stock



SE 1100 Towel Bar



SE 1100 Header

### GLASS TEXTURES



1/8" Clear



1/8" Rain

### AVAILABLE COLORS



Polished Chrome



Brushed Nickel

### WIDTH & HEIGHT OPTIONS

<u>SE-1100</u> <u>Width x Height</u>	<u>Chrome</u> <u>List Price</u>	<u>Brushed Nickel</u> <u>List Price</u>
47 1/2" x 63 1/2"	\$335	\$405
59 1/2" x 63 1/2"	\$335	\$405
59 1/2" x 67"	\$335	\$405

# TUB & SHOWER ENCLOSURES

## TE-1200 LIGHT FRAMED TUB ENCLOSURES



### FEATURES & BENEFITS

- These units are available with 5/32" clear and rain glass
- Features euro style towel bar and knob that are mounted through the glass
- Pricing and availability is based on glass being in stock

### GLASS TEXTURES



5/32" Clear



5/32" Rain

### AVAILABLE COLORS



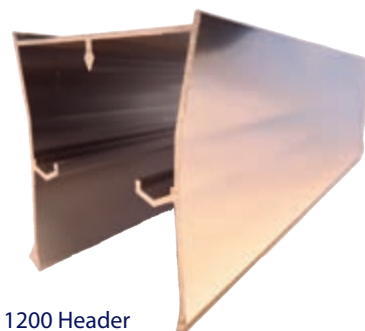
Polished Chrome



Brushed Nickel



TE 1200 Towel Bar

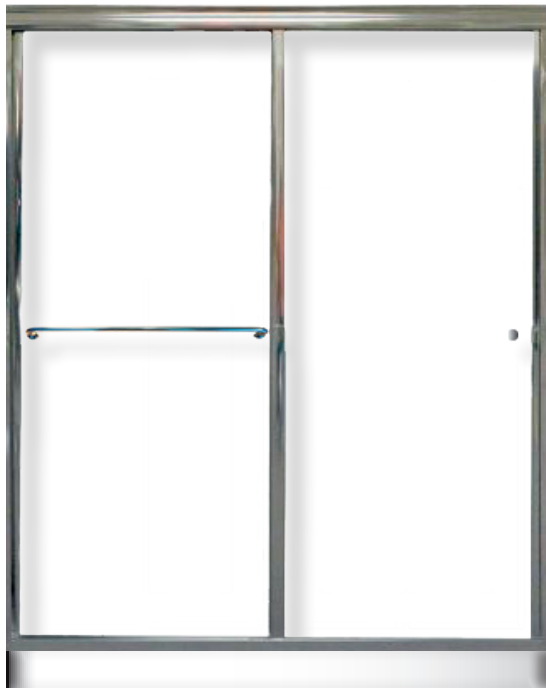


TE 1200 Header

### WIDTH & HEIGHT OPTIONS

TE-1200 Width x Height	Chrome List Price	Brushed Nickel List Price
59 1/2" x 54 7/8"	\$378	\$450
58" x 56 7/8"	\$378	\$450
59 1/2" x 60 3/8"	\$378	\$450

## SE-1200 LIGHT FRAMED SHOWER ENCLOSURES



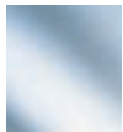
### FEATURES & BENEFITS

- These units are available with 5/32" clear and rain glass
- Features euro style towel bar and knob that are mounted through the glass
- Pricing and availability is based on glass being in stock



SE 1200 Towel Bar

### GLASS TEXTURES



5/32" Clear



5/32" Rain

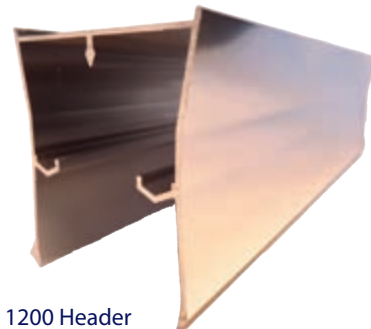
### AVAILABLE COLORS



Polished Chrome



Brushed Nickel



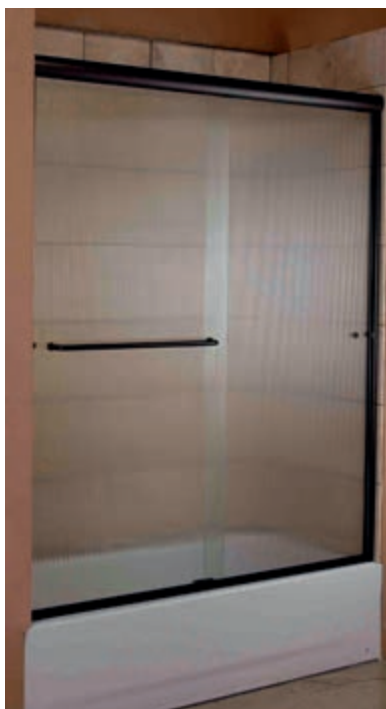
SE 1200 Header

### WIDTH & HEIGHT OPTIONS

<u>SE-1200</u> <u>Width x Height</u>	<u>Chrome</u> <u>List Price</u>	<u>Brushed Nickel</u> <u>List Price</u>
47 1/2" x 63 1/2"	\$347	\$420
59 1/2" x 63 1/2"	\$385	\$465
59 1/2" x 67"	\$385	\$465

# TUB & SHOWER ENCLOSURES

## TE-2000 FRAMELESS EURO TUB ENCLOSURES



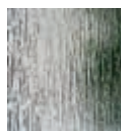
### FEATURES & BENEFITS

- 1/4" standard thick tempered glass
- Pencil polished edges
- Euro style towel bar and knob mounted through glass
- Unique finger-pull design on the towel bar and knob for ease of use and safety
- 7/8" diameter heavy-duty precision rollers
- Available in custom glass sizes and textures
- List prices provided are for standard 1/4" thick glass in our most popular finishes including Polished Chrome, Brushed Nickel, Polished Brass, Oil Rubbed Bronze and Matte Black
- For custom sized units, or units requiring specialty or non-stock glass, please contact customer service for pricing
- Pricing & availability is based on glass being in stock

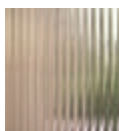
### GLASS TEXTURES



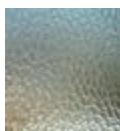
1/4" Clear



1/4" Rain

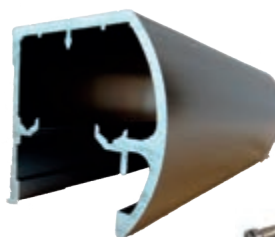


1/4" Narrow Reed



1/4" Aquatex

TE 2000 Header



TE 2000 Single Mount Towel Bar



### AVAILABLE COLORS



Polished Chrome



Oil Rubbed Bronze



Brushed Nickel



Polished Brass



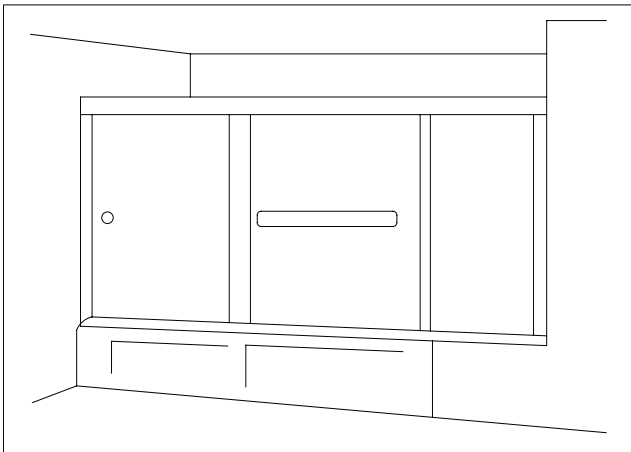
Matte Black

### WIDTH & HEIGHT OPTIONS

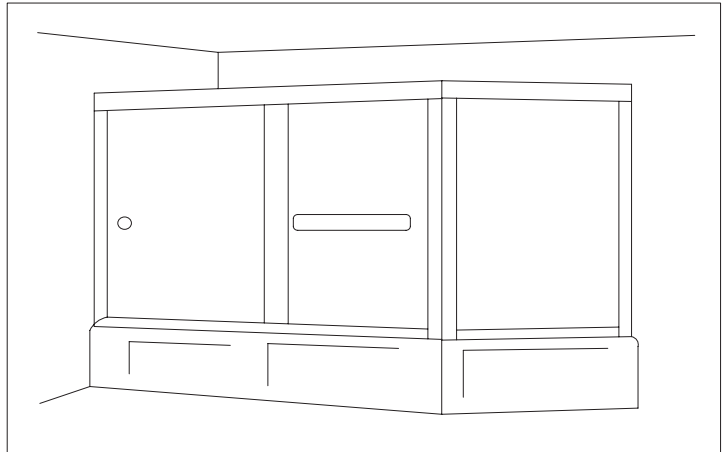
<u>TE-2000</u>		<u>Chrome</u>	<u>Oil Rubbed Bronze</u>	<u>Brushed Nickel</u>	<u>Polished Brass</u>	<u>Matte Black</u>
<u>Width x Height</u>		<u>List Price</u>	<u>List Price</u>	<u>List Price</u>	<u>List Price</u>	<u>List Price</u>
57 1/2"	x 54 3/4"	\$525	\$746	\$746	\$746	\$746
54"	x 57 3/4"	\$525	\$746	\$746	\$746	\$746
57 1/2"	x 57 3/4"	\$525	\$746	\$746	\$746	\$746
60"	x 57 3/4"	\$525	\$746	\$746	\$746	\$746
66"	x 57 3/4"	\$570	\$809	\$809	\$809	\$809
72"	x 57 3/4"	\$570	\$809	\$809	\$809	\$809
57 1/2"	x 60 1/4"	\$570	\$809	\$809	\$809	\$809
60"	x 60 1/4"	\$570	\$809	\$809	\$809	\$809
66"	x 60 1/4"	\$570	\$809	\$809	\$809	\$809
57 1/2"	x 62 3/4"	\$570	\$809	\$809	\$809	\$809
60"	x 62 3/4"	\$570	\$809	\$809	\$809	\$809
66"	x 62 3/4"	\$570	\$809	\$809	\$809	\$809
72"	x 62 3/4"	\$570	\$809	\$809	\$809	\$809



## TE-2000A/A1/C FRAMELESS EURO TUB ENCLOSURES WITH PANELS



TE 2000 A/A1

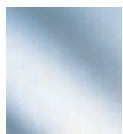


TE 2000 C

### FEATURES & BENEFITS

- 1/4" standard thick tempered glass
- Includes fixed panel(s) in 3/16" glass
- Pencil polished edges
- Euro style towel bar & knob mounted through glass
- Unique finger-pull design on the towel bar & knob for ease of use & safety
- 7/8" diameter heavy-duty precision roller
- Available in custom glass sizes & textures
- Available in different configurations
- Contact customer service for standard or custom pricing

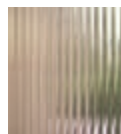
### GLASS TEXTURES



1/4" Clear



1/4" Rain



1/4" Narrow Reed

### AVAILABLE COLORS



Polished Chrome



Oil Rubbed Bronze



Brushed Nickel



Polished Brass



Matte Black

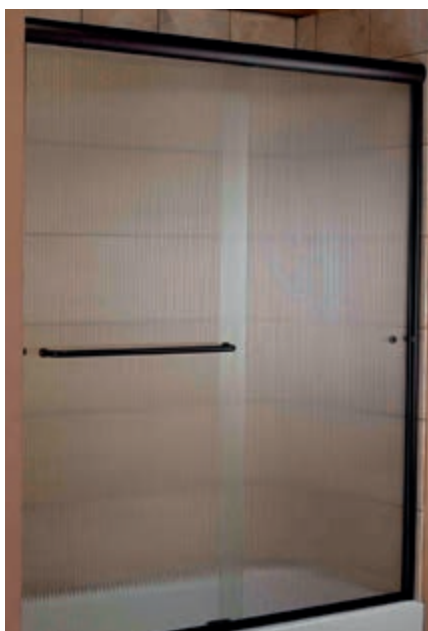
### WIDTH & HEIGHT OPTIONS

TE-2000A			TE 2000A1			TE 2000 C		
Width x Height			Width x Height			Width x Height		
72"	x	57 3/4"	84"	x	57 3/4"	60"	x	57 3/4"
72"	x	60 1/4"	84"	x	60 1/4"	60"	x	60 1/4"
72"	x	62 3/4"	84"	x	62 3/4"	60"	x	62 3/4"

These units can be ordered up to the largest size listed. Notched Panel Charge - \$25.00 Net Charge per Notched Panel.

# TUB & SHOWER ENCLOSURES

## SE-2000 FRAMELESS EURO SHOWER ENCLOSURES



### FEATURES & BENEFITS

- 1/4" standard thick tempered glass
- Pencil polished edges
- Euro style towel bar and knob mounted through glass
- Unique finger-pull design on the towel bar and knob for ease of use and safety
- 7/8" diameter heavy-duty precision rollers
- Available in custom glass sizes and textures
- List prices provided are for standard 1/4" thick glass in our most popular finishes including Chrome, Oil Rubbed Bronze, Brushed Nickel, Polished Brass and Matte Black
- For custom sized units, or units requiring specialty or non-stock glass, please contact customer service for pricing
- Pricing & availability is based on glass being in stock

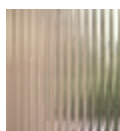
### GLASS TEXTURES



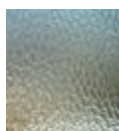
1/4" Clear



1/4" Rain



1/4" Narrow Reed



1/4" Aquatex



SE 2000 Header

### AVAILABLE COLORS



Polished Chrome



Oil Rubbed Bronze



Brushed Nickel



Polished Brass



Matte Black

NEW

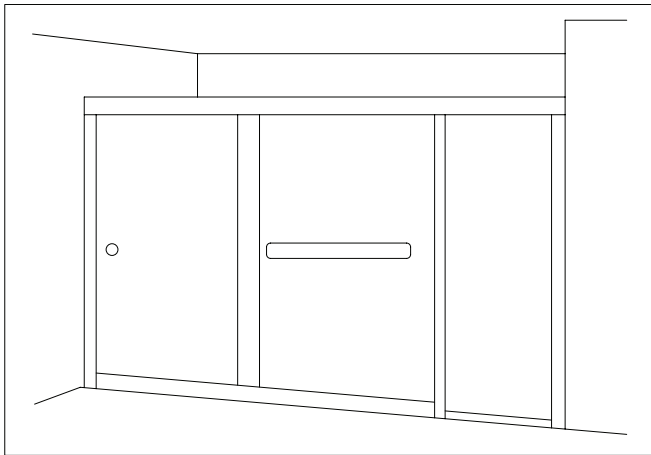


SE 2000 Single Mount Towel Bar

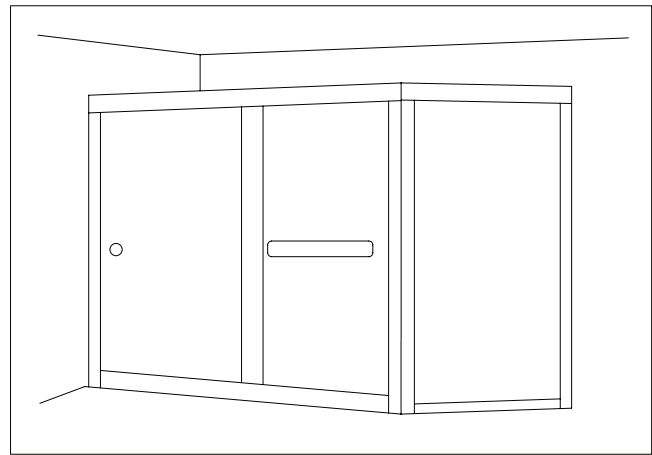
### WIDTH & HEIGHT OPTIONS

<u>SE-2000</u>		<u>Chrome</u>	<u>Oil Rubbed Bronze</u>	<u>Brushed Nickel</u>	<u>Polished Brass</u>	<u>Matte Black</u>
<u>Width x Height</u>		<u>List Price</u>	<u>List Price</u>	<u>List Price</u>	<u>List Price</u>	<u>List Price</u>
57 1/2"	x 65 3/4"	\$570	\$809	\$809	\$809	\$809
60"	x 65 3/4"	\$570	\$809	\$809	\$809	\$809
66"	x 65 3/4"	\$570	\$809	\$809	\$809	\$809
48"	x 67 3/4"	\$491	\$697	\$697	\$697	\$697
54"	x 67 3/4"	\$570	\$809	\$809	\$809	\$809
57 1/2"	x 67 3/4"	\$570	\$809	\$809	\$809	\$809
60"	x 67 3/4"	\$570	\$809	\$809	\$809	\$809
66"	x 67 3/4"	\$570	\$809	\$809	\$809	\$809
48"	x 70 3/4"	\$491	\$697	\$697	\$697	\$697
54"	x 70 3/4"	\$570	\$809	\$809	\$809	\$809
57 1/2"	x 70 3/4"	\$570	\$809	\$809	\$809	\$809
60"	x 70 3/4"	\$570	\$809	\$809	\$809	\$809
66"	x 70 3/4"	\$570	\$809	\$809	\$809	\$809
72"	x 70 3/4"	\$570	\$809	\$809	\$809	\$809
48"	x 75 1/4"	\$630	\$770	\$770	\$770	\$770
54"	x 75 1/4"	\$713	\$850	\$850	\$850	\$850
60"	x 75 1/4"	\$713	\$850	\$850	\$850	\$850
66"	x 75 1/4"	\$713	\$850	\$850	\$850	\$850
72"	x 75 1/4"	\$713	\$850	\$850	\$850	\$850

## SE-2000A/A1/C FRAMELESS EURO SHOWER ENCLOSURES WITH PANELS



SE 2000 A/A1

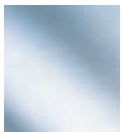


SE 2000 C

### FEATURES & BENEFITS

- 1/4" standard thick tempered glass
- Includes fixed panel(s) in 3/16" glass
- Pencil polished edges
- Euro style towel bar & knob mounted through glass
- Unique finger-pull design on the towel bar & knob for ease of use and safety
- 7/8" diameter heavy-duty precision rollers
- Available in custom glass sizes and textures
- Available in different configurations
- Contact customer service for standard or custom pricing

### GLASS TEXTURES



1/4" Clear



1/4" Rain



1/4" Narrow Reed

### AVAILABLE COLORS



Polished Chrome



Oil Rubbed Bronze



Brushed Nickel



Polished Brass



Matte Black

**NEW**

### WIDTH & HEIGHT OPTIONS

<u>SE-2000A</u>			<u>SE 2000A1</u>			<u>SE 2000 C</u>		
<u>Width x Height</u>			<u>Width x Height</u>			<u>Width x Height</u>		
72"	x	65 3/4"	84"	x	65 3/4"	60"	x	65 3/4"
72"	x	67 3/4"	84"	x	67 3/4"	60"	x	67 1/4"
72"	x	70 3/4"	84"	x	70 3/4"	60"	x	70 3/4"
72"	x	75 1/4"	84"	x	75 1/4"	60"	x	75 1/4"

These units can be ordered up to the largest size listed. Notched Panel Charge - \$25.00 Net Charge per Notched Panel.

# TUB & SHOWER ENCLOSURES

## TE-3000 FRAMED TUB ENCLOSURES



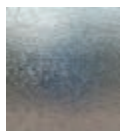
### FEATURES & BENEFITS

- 3/16" standard thick tempered glass
- Double towel bar
- Handle mounted in frame
- Available in custom glass sizes and textures
- List prices provided are for standard 3/16" thick glass in our most popular finishes including Chrome, and Brushed Nickel
- For custom sized units, or units requiring specialty or non-stock glass, please contact customer service for pricing
- Pricing & availability is based on glass being in stock

### GLASS TEXTURES



3/16" Clear



3/16" Obscure

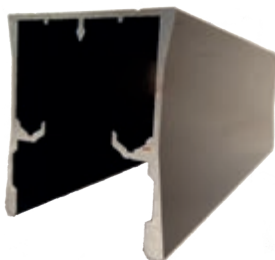


3/16" Rain



1/4" Narrow Reed

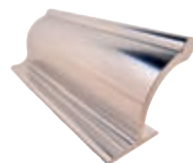
TE 3000 Header



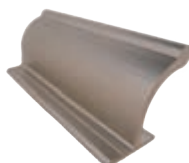
TE 3000 Handle



### AVAILABLE COLORS



Polished Chrome

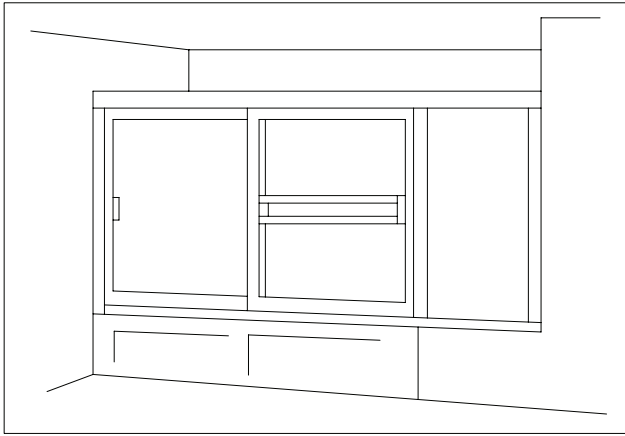


Brushed Nickel

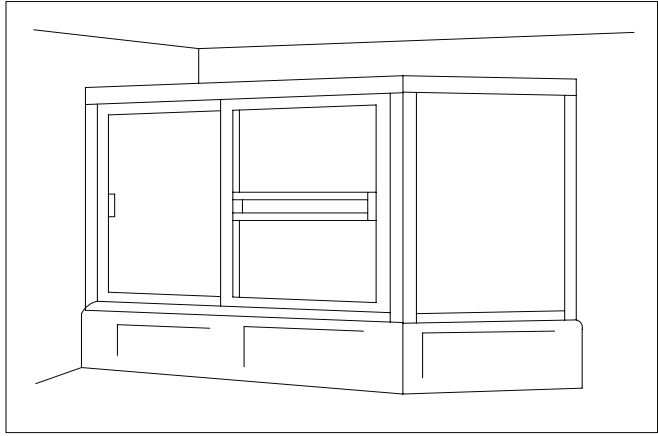
### WIDTH & HEIGHT OPTIONS

TE-3000		Chrome	Brushed Nickel
Width x Height		List Price	List Price
57 1/2"	x 56 1/4"	\$630	\$895
57 1/2"	x 57"	\$630	\$895
42"	x 58 1/4"	\$630	\$895
48"	x 58 1/4"	\$630	\$895
54"	x 58 1/4"	\$630	\$895
56"	x 58 1/4"	\$630	\$895
60"	x 58 1/4"	\$630	\$895
66"	x 58 1/4"	\$669	\$950
72"	x 58 1/4"	\$774	\$1,100
60"	x 59 1/4"	\$630	\$895
60"	x 60 1/4"	\$698	\$991
57 1/2"	x 61 3/4"	\$698	\$991
60"	x 61 3/4"	\$698	\$991
60"	x 64 1/4"	\$698	\$991

## TE-3000A/A1/C FRAMED TUB ENCLOSURES WITH PANELS

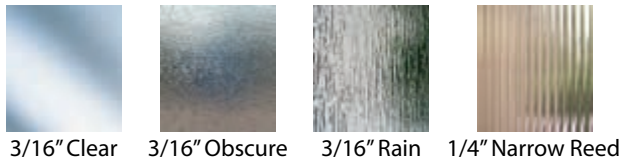


TE 3000 A/A1

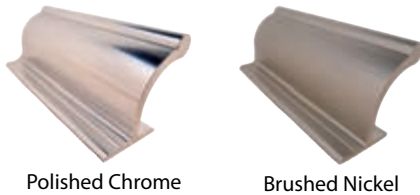


TE 3000 C

### GLASS TEXTURES



### AVAILABLE COLORS



Polished Chrome

Brushed Nickel

### FEATURES & BENEFITS

- 3/16" standard thick tempered glass
- Includes fixed panel(s)
- Double towel bar
- Handle mounted in frame
- Available in custom glass sizes and textures
- List prices provided are for standard 3/16" thick glass in our most popular finishes including Chrome, and Brushed Nickel
- Available in different configurations
- For pricing, standard or custom, contact customer service

### WIDTH & HEIGHT OPTIONS

<u>TE-3000A</u>			<u>TE 3000A1</u>			<u>TE 3000 C</u>		
<u>Width x Height</u>			<u>Width x Height</u>			<u>Width x Height</u>		
72"	x	58 1/4"	84"	x	58 1/4"	60"	x	58 1/4"
72"	x	64 1/4"	84"	x	64 1/4"	60"	x	64 1/4"

These units can be ordered up to the largest size listed. Notched Panel Charge - \$25.00 Net Charge per Notched Panel.

# TUB & SHOWER ENCLOSURES

## SE-3000 FRAMED SHOWER ENCLOSURES



### FEATURES & BENEFITS

- 3/16" standard thick tempered glass
- Double towel bar
- Handle mounted in frame
- Available in custom glass sizes and textures
- List prices provided are for standard 3/16" thick glass in our most popular finishes including Chrome, and Brushed Nickel
- For custom sized units, or units requiring specialty or non-stock glass, please contact customer service for pricing
- Pricing & availability is based on glass being in stock

### GLASS TEXTURES



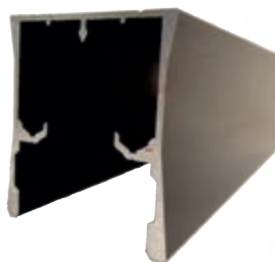
3/16" Clear    3/16" Obscure    3/16" Rain    1/4" Narrow Reed

### AVAILABLE COLORS



Polished Chrome    Brushed Nickel

SE 3000 Header



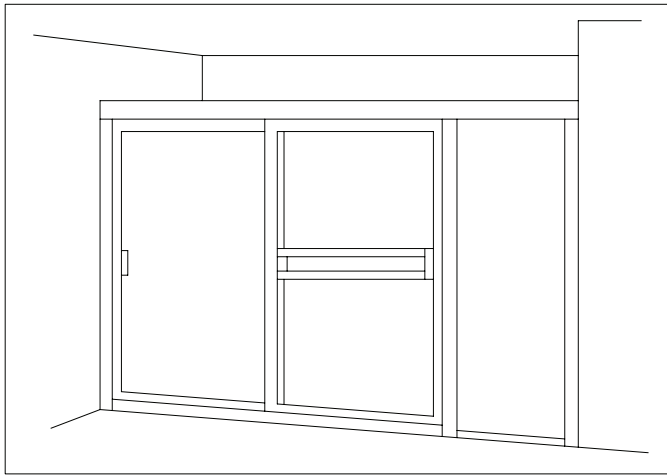
SE 3000 Handle



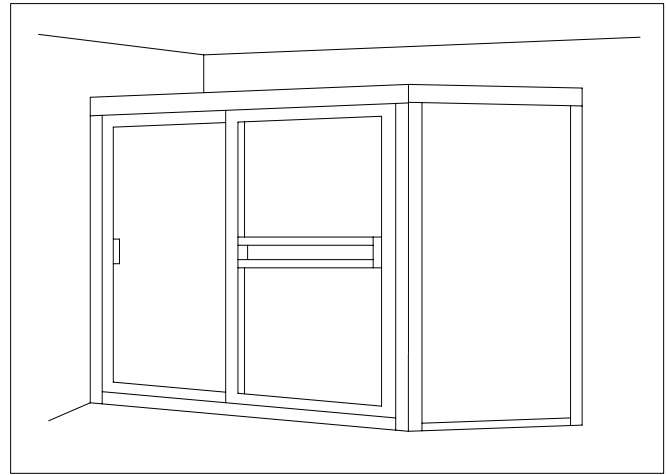
### WIDTH & HEIGHT OPTIONS

<u>SE-3000</u>		<u>Chrome</u>	<u>Brushed Nickel</u>
<u>Width x Height</u>		<u>List Price</u>	<u>List Price</u>
44 1/2"	x 66 1/2"	\$661	\$938
48"	x 67 1/4"	\$661	\$938
57 1/2"	x 67 1/4"	\$735	\$1,043
60"	x 67 1/4"	\$735	\$1,043
48"	x 69 1/4"	\$661	\$938
54"	x 69 1/4"	\$735	\$1,043
60"	x 69 1/4"	\$735	\$1,043
42"	x 72 1/4"	\$661	\$938
48"	x 72 1/4"	\$674	\$957
54"	x 72 1/4"	\$748	\$1,062
60"	x 72 1/4"	\$748	\$1,062
66"	x 72 1/4"	\$789	\$1,120
72"	72 1/4"	\$910	\$1,292

## SE-3000A/A1/C FRAMED SHOWER ENCLOSURES WITH PANELS



SE 3000 A/A1

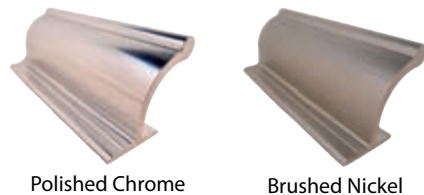


SE 3000 C

### GLASS TEXTURES



### AVAILABLE COLORS



### WIDTH & HEIGHT OPTIONS

<u>SE-3000A</u>			<u>SE 3000A1</u>			<u>SE 3000 C</u>		
<u>Width x Height</u>			<u>Width x Height</u>			<u>Width x Height</u>		
72"	x	69 1/4"	84"	x	69 1/4"	60"	x	69 1/4"
72"	x	72 1/4"	84"	x	72 1/4"	60"	x	72 1/4"

### FEATURES & BENEFITS

- 3/16" standard thick tempered glass
- Includes fixed panel(s)
- Double towel bar
- Handle mounted in frame
- Available in custom glass sizes and textures
- List prices provided are for standard 3/16" thick glass in our most popular finishes including Chrome, and Brushed Nickel
- Available in different configurations
- For pricing, standard or custom, contact customer service

These units can be ordered up to the largest size listed. Notched Panel Charge - \$25.00 Net Charge per Notched Panel.

# TUB & SHOWER ENCLOSURES

## TE-4000 FRAMELESS LIGHT EURO TUB ENCLOSURES



Shown in Polished Chrome

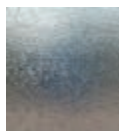
### FEATURES & BENEFITS

- 3/16" standard thick tempered glass
- Pencil polished edges
- Single rounded towel bar
- Handle and towel bar mounted on glass
- Available in custom glass sizes and textures
- List prices provided are for standard 3/16" thick glass in our most popular finishes including Chrome, Oil Rubbed Bronze and Brushed Nickel
- For custom sized units, or units requiring specialty or non-stock glass, please contact customer service for pricing
- Pricing & availability is based on glass being in stock

### GLASS TEXTURES



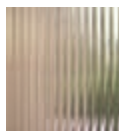
3/16" Clear



3/16" Obscure

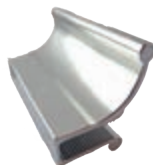


3/16" Rain



1/4" Narrow Reed

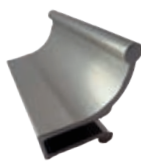
### AVAILABLE COLORS



Polished Chrome



Oil Rubbed Bronze



Brushed Nickel

TE 4000 Header



TE 4000 Towel Bar

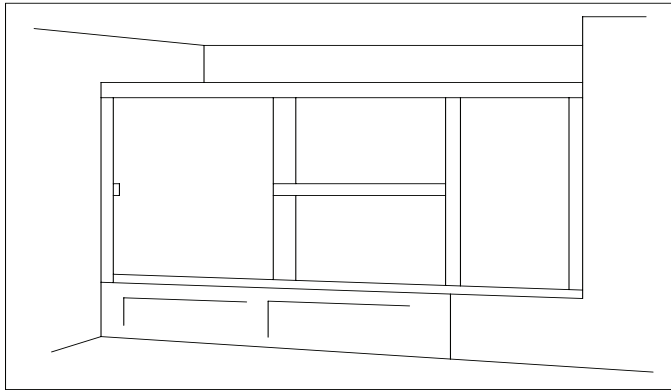


### WIDTH & HEIGHT OPTIONS

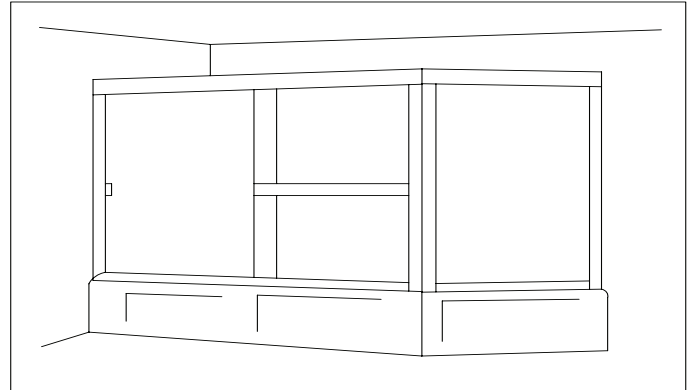
<u>TE-4000</u>		<u>Chrome</u>	<u>Oil Rubbed Bronze</u>	<u>Brushed Nickel</u>
<u>Width x Height</u>		<u>List Price</u>	<u>List Price</u>	<u>List Price</u>
57 1/2"	x 54 3/4"	\$247	\$328	\$328
57 1/2"	x 55 1/2"	\$247	\$328	\$328
42"	x 56 3/4"	\$247	\$328	\$328
48"	x 56 3/4"	\$247	\$328	\$328
54"	x 56 3/4"	\$247	\$328	\$328
56"	x 56 3/4"	\$247	\$328	\$328
60"	x 56 3/4"	\$247	\$328	\$328
66"	x 56 3/4"	\$259	\$347	\$347
72"	x 56 3/4"	\$292	\$347	\$347
60"	x 57 3/4"	\$247	\$394	\$394
60"	x 58 3/4"	\$268	\$328	\$328
57 1/2"	x 60 1/4"	\$268	\$360	\$360
60"	x 60 1/4"	\$268	\$360	\$360
60"	x 62 3/4"	\$268	\$360	\$360



## TE-4000A/A1/C FRAMELESS LIGHT EURO TUB ENCLOSURES WITH PANELS

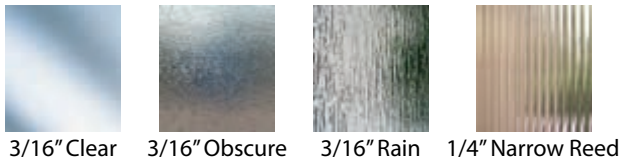


TE 4000 A/A1



TE 4000 C

### GLASS TEXTURES



3/16" Clear    3/16" Obscure    3/16" Rain    1/4" Narrow Reed

### AVAILABLE COLORS



Polished Chrome    Oil Rubbed Bronze    Brushed Nickel

### WIDTH & HEIGHT OPTIONS

<u>TE-4000A</u>			<u>TE 4000A1</u>			<u>TE 4000 C</u>		
<u>Width x Height</u>			<u>Width x Height</u>			<u>Width x Height</u>		
72"	x	54 3/4"	84"	x	54 3/4"	60"	x	54 3/4"
72"	x	55 1/2"	84"	x	55 1/2"	60"	x	55 1/2"
72"	x	56 3/4"	84"	x	56 3/4"	60"	x	56 3/4"
72"	x	57 3/4"	84"	x	57 3/4"	60"	x	57 3/4"
72"	x	58 3/4"	84"	x	58 3/4"	60"	x	58 3/4"
72"	x	60 1/4"	84"	x	60 1/4"	60"	x	60 1/4"
72"	x	62 3/4"	84"	x	62 3/4"	60"	x	62 3/4"

### FEATURES & BENEFITS

- 3/16" standard thick tempered glass
- Includes fixed panel(s)
- Pencil polished edges
- Single rounded towel bar
- Handle and towel bar mounted on glass
- Available in custom glass sizes and textures
- Available in different configurations
- For pricing, standard or custom, contact customer service

These units can be ordered up to the largest size listed. Notched Panel Charge - \$25.00 Net Charge per Notched Panel.

# TUB & SHOWER ENCLOSURES

## SE-4000 FRAMELESS LIGHT EURO SHOWER ENCLOSURES



Shown in Polished Chrome

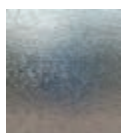
### FEATURES & BENEFITS

- 3/16" standard thick tempered glass
- Pencil polished edges
- Single rounded towel bar
- Handle and towel bar mounted on glass
- Available in custom glass sizes and textures
- List prices provided are for standard 3/16" thick glass in our most popular finishes including Chrome, Oil Rubbed Bronze and Brushed Nickel
- For custom sized units, or units requiring specialty or non-stock glass, please contact customer service for pricing
- Pricing & availability is based on glass being in stock

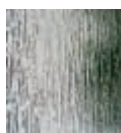
### GLASS TEXTURES



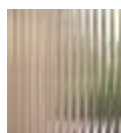
3/16" Clear



3/16" Obscure

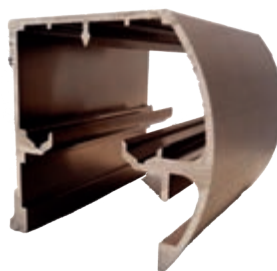


3/16" Rain



1/4" Narrow Reed

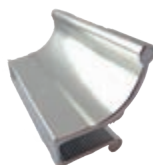
SE 4000 Header



SE 4000 Towel Bar



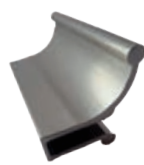
### AVAILABLE COLORS



Polished Chrome



Oil Rubbed Bronze

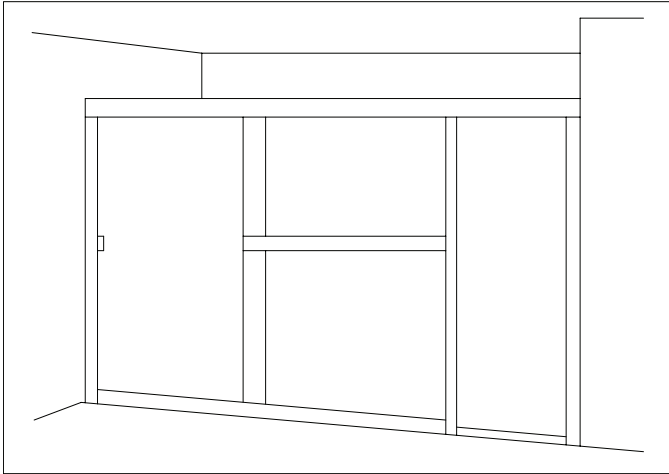


Brushed Nickel

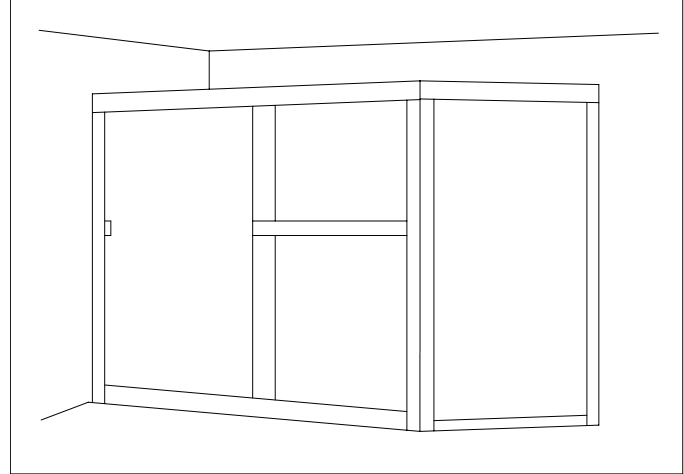
### WIDTH & HEIGHT OPTIONS

<u>SE-4000</u>	<u>Chrome</u>	<u>Oil Rubbed Bronze</u>	<u>Brushed Nickel</u>
<u>Width x Height</u>	<u>List Price</u>	<u>List Price</u>	<u>List Price</u>
44 1/2" x 65"	\$246	\$328	\$328
48" x 65 3/4"	\$246	\$328	\$328
57 1/2" x 65 3/4"	\$268	\$360	\$360
60" x 65 3/4"	\$268	\$360	\$360
48" x 67 3/4"	\$246	\$328	\$328
54" x 67 3/4"	\$268	\$360	\$360
60" x 67 3/4"	\$268	\$360	\$360
42" x 70 3/4"	\$246	\$328	\$328
48" x 70 3/4"	\$250	\$334	\$334
54" x 70 3/4"	\$272	\$365	\$365
60" x 70 3/4"	\$272	\$365	\$365
66" x 70 3/4"	\$284	\$382	\$382
72" x 70 3/4"	\$320	\$433	\$433

## SE-4000A/A1/C FRAMELESS LIGHT EURO SHOWER ENCLOSURES WITH PANELS



SE 4000 A/A1

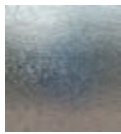


SE 4000 C

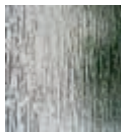
### GLASS TEXTURES



3/16" Clear



3/16" Obscure

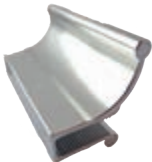


3/16" Rain



1/4" Narrow Reed

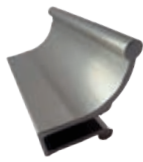
### AVAILABLE COLORS



Polished Chrome



Oil Rubbed Bronze



Brushed Nickel

### FEATURES & BENEFITS

- 3/16" standard thick tempered glass
- Includes fixed panel(s)
- Pencil polished edges
- Single rounded towel bar
- Handle and towel bar mounted on glass
- Available in custom glass sizes and textures
- Available in different configurations
- The price for these units includes any standard unit
- For pricing, standard or custom, contact customer service

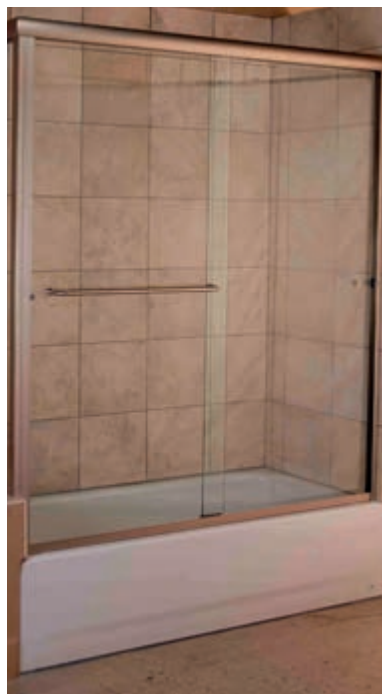
### WIDTH & HEIGHT OPTIONS

<u>SE-4000A</u>			<u>SE 4000A1</u>			<u>SE 4000 C</u>		
<u>Width x Height</u>			<u>Width x Height</u>			<u>Width x Height</u>		
72"	x	65 3/4"	84"	x	65 3/4"	60"	x	65 3/4"
72"	x	67 3/4"	84"	x	67 3/4"	60"	x	67 3/4"
72"	x	70 3/4"	84"	x	70 3/4"	60"	x	70 3/4"

These units can be ordered up to the largest size listed. Notched Panel Charge - \$25.00 Net Charge per Notched Panel.

# TUB & SHOWER ENCLOSURES

## TE-5000 FRAMELESS HEAVY TUB ENCLOSURES



### FEATURES & BENEFITS

- 5/16" standard thick tempered glass with clamp on top hanger
- Available in 3/8" clear or rain
- Flat polished edges
- Euro style towel bar and knob mounted through glass
- Unique finger-pull design on the towel bar and knob for ease of use and safety
- 7/8" diameter holes drilled through the glass
- Available in custom glass sizes and textures
- List prices provided are for standard 5/16" thick clear glass in our most popular finishes including Chrome, Oil Rubbed Bronze, Brushed Nickel and Matte Black
- For custom sized units, or units requiring specialty or non-stock glass, please contact customer service for pricing
- Pricing & availability is based on glass being in stock

### GLASS TEXTURES



5/16" Clear

3/8" Clear

3/8" Rain

### AVAILABLE COLORS



Polished Chrome

Oil Rubbed Bronze

Brushed Nickel



TE 5000 Header

Matte Black



TE 5000 Tandem Roller  
3/8" only  
(Inside)



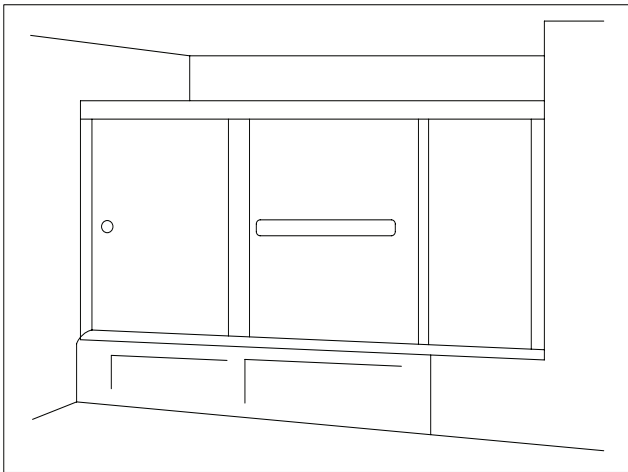
TE 5000 Tandem Roller  
3/8" only  
(Outside)

### WIDTH & HEIGHT OPTIONS

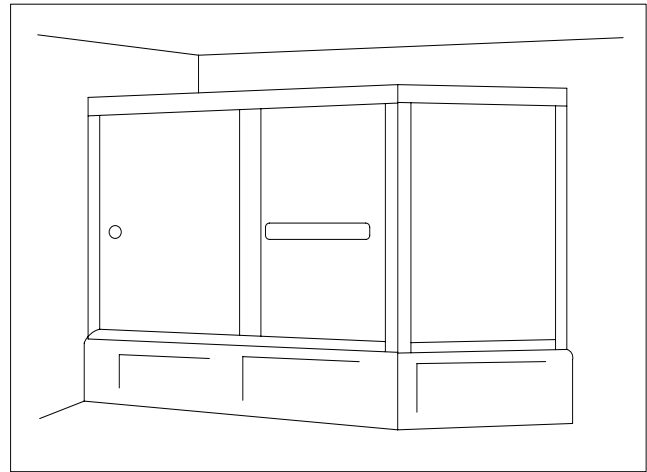
TE-5000		Chrome	Oil Rubbed Bronze	Brushed Nickel	Matte Black
Width	Height	List Price	List Price	List Price	List Price
54"	x 57 3/4"	\$825	\$1,172	\$1,172	\$1,172
57 1/2"	x 57 3/4"	\$825	\$1,172	\$1,172	\$1,172
57 1/2"	x 62 3/4"	\$825	\$1,172	\$1,172	\$1,172
60"	x 57 3/4"	\$825	\$1,172	\$1,172	\$1,172
66"	x 57 3/4"	\$855	\$1,214	\$1,214	\$1,214
72"	x 57 3/4"	\$855	\$1,214	\$1,214	\$1,214
60"	x 60 1/4"	\$855	\$1,214	\$1,214	\$1,214
66"	x 60 1/4"	\$855	\$1,214	\$1,214	\$1,214
57 1/2"	x 62 3/4"	\$855	\$1,214	\$1,214	\$1,214
60"	x 62 3/4"	\$855	\$1,214	\$1,214	\$1,214
66"	x 62 3/4"	\$855	\$1,214	\$1,214	\$1,214
72"	x 62 3/4"	\$855	\$1,214	\$1,214	\$1,214

Please Note\* Add \$100.00 Net for 3/8" Clear. Add \$200.00 Net for 3/8" Rain. Availability & price is based on stock.

## TE-5000A/A1/C FRAMELESS HEAVY TUB ENCLOSURES WITH PANELS

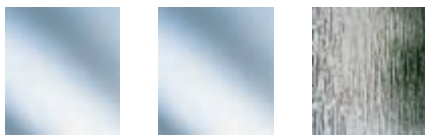


TE 5000 A/A1



TE 5000 C

### GLASS TEXTURES



5/16" Clear

3/8" Clear

3/8" Rain

### AVAILABLE COLORS



Polished Chrome

Oil Rubbed Bronze

Brushed Nickel

Matte Black

### WIDTH & HEIGHT OPTIONS

### FEATURES & BENEFITS

- 5/16" standard thick tempered glass with clamp on top hanger
- Available in 3/8" clear or rain
- Includes 3/16" thick standard fixed panel
- Flat polished edges
- Euro style towel bar and knob mounted through glass
- Unique finger-pull design on the towel bar and knob for ease of use and safety
- 7/8" diameter holes drilled through the glass
- Various widths/heights available
- Available in custom glass sizes and textures
- Available in different configurations
- For pricing, standard or custom, contact customer service

TE-5000A		
Width x Height		
72"	x	57 3/4"
72"	x	60 1/4"
72"	x	62 3/4"

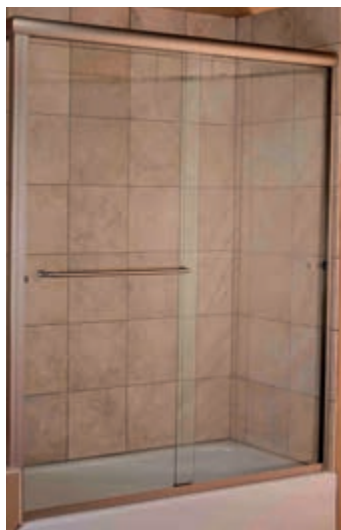
TE 5000A1		
Width x Height		
84"	x	57 3/4"
84"	x	60 1/4"
84"	x	62 3/4"

TE 5000 C		
Width x Height		
60"	x	57 3/4"
60"	x	60 1/4"
60"	x	62 3/4"

These units can be ordered up to the largest size listed. Notched Panel Charge - \$25.00 Net Charge per Notched Panel.

# TUB & SHOWER ENCLOSURES

## SE-5000 FRAMELESS HEAVY SHOWER ENCLOSURES



### FEATURES & BENEFITS

- 5/16" standard thick tempered glass with clamp on top hanger
- Available in 3/8" clear or rain
- Flat polished edges
- Euro style towel bar and knob mounted through glass
- Unique finger-pull design on the towel bar and knob for ease of use and safety
- 7/8" diameter holes drilled through the glass
- Available in custom glass sizes and textures
- List prices provided are for standard 5/16" thick clear glass in our most popular finishes including Chrome, Oil Rubbed Bronze, Brushed Nickel and Matte Black
- For custom sized units, or units requiring specialty or non-stock glass, please contact customer service for pricing
- Pricing & availability is based on glass being in stock

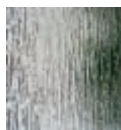
### GLASS TEXTURES



5/16" Clear



3/8" Clear



3/8" Rain

### AVAILABLE COLORS



Polished Chrome



Oil Rubbed Bronze



Brushed Nickel



Matte Black

SE 5000 Header



SE 5000 Tandem Roller  
3/8" only  
(Inside)



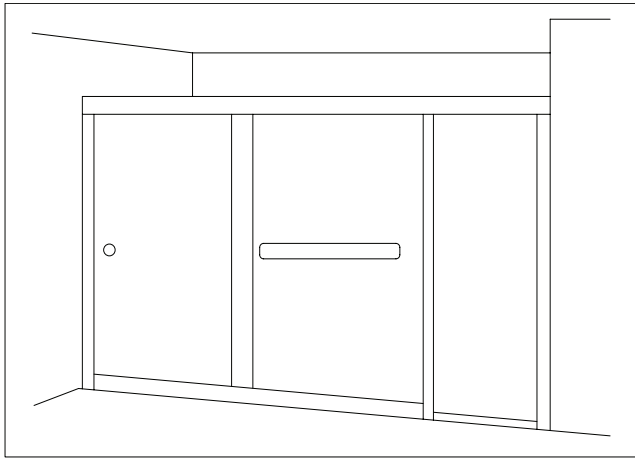
SE 5000 Tandem Roller  
3/8" only  
(Outside)

### WIDTH & HEIGHT OPTIONS

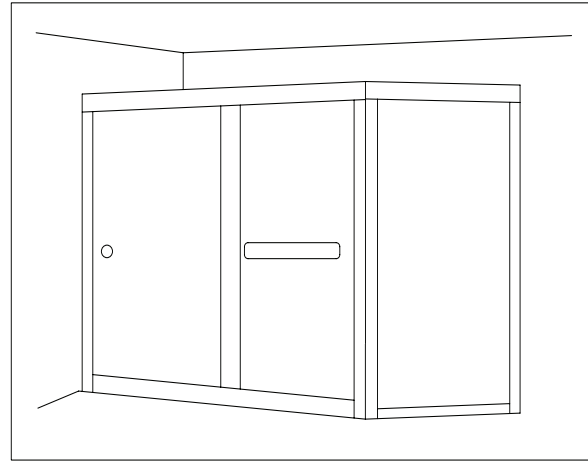
SE-5000		Chrome	Oil Rubbed Bronze	Brushed Nickel	Matte Black
Width x Height		List Price	List Price	List Price	List Price
60" x 65 3/4"		\$903	\$1,282	\$1,282	\$1,282
66" x 65 3/4"		\$903	\$1,282	\$1,282	\$1,282
48" x 67 3/4"		\$778	\$1,106	\$1,106	\$1,106
54" x 67 3/4"		\$903	\$1,282	\$1,282	\$1,282
57 1/2" x 67 3/4"		\$903	\$1,282	\$1,282	\$1,282
60" x 67 3/4"		\$903	\$1,282	\$1,282	\$1,282
66" x 67 3/4"		\$903	\$1,282	\$1,282	\$1,282
48" x 70 3/4"		\$778	\$1,106	\$1,106	\$1,106
54" x 70 3/4"		\$903	\$1,282	\$1,282	\$1,282
57 1/2" x 70 3/4"		\$903	\$1,282	\$1,282	\$1,282
60" x 70 3/4"		\$903	\$1,282	\$1,282	\$1,282
66" x 70 3/4"		\$903	\$1,282	\$1,282	\$1,282
72" x 70 3/4"		\$933	\$1,325	\$1,325	\$1,325
48" x 75 1/4"		\$778	\$1,106	\$1,106	\$1,106
54" x 75 1/4"		\$933	\$1,325	\$1,325	\$1,325
60" x 75 1/4"		\$933	\$1,325	\$1,325	\$1,325
66" x 75 1/4"		\$933	\$1,325	\$1,325	\$1,325
72" x 75 1/4"		\$933	\$1,325	\$1,325	\$1,325
60" x 80 1/4"		\$933	\$1,325	\$1,325	\$1,325
66" x 80 1/4"		\$933	\$1,325	\$1,325	\$1,325
72" x 80 1/4"		\$933	\$1,325	\$1,325	\$1,325

Please Note\* Add \$100.00 Net for 3/8" Clear. Add \$200.00 Net for 3/8" Rain. Availability & price is based on stock.

## SE-5000A/A1/C FRAMELESS HEAVY SHOWER ENCLOSURES WITH PANELS



SE 5000 A/A1



SE 5000 C

### FEATURES & BENEFITS

- 5/16" standard thick tempered glass with clamp on top hanger
- Available in 3/8" clear or rain
- Includes 3/16" thick standard fixed panel
- Flat polished edges
- Euro style towel bar and knob mounted through glass
- Unique finger-pull design on the towel bar and knob for ease of use and safety
- 7/8" diameter holes drilled through the glass
- Various widths/heights available
- Available in custom glass sizes and textures
- Available in different configurations
- Price includes any standard unit
- For standard or custom pricing, contact us

### GLASS TEXTURES



5/16" Clear



3/8" Clear



3/8" Rain

### AVAILABLE COLORS



Polished Chrome



Oil Rubbed Bronze



Brushed Nickel



Matte Black

### WIDTH & HEIGHT OPTIONS

SE-5000A			SE 5000A1			SE 5000 C		
Width x Height			Width x Height			Width x Height		
72"	x	65 3/4"	84"	x	65 3/4"	60"	x	65 3/4"
72"	x	67 3/4"	84"	x	67 3/4"	60"	x	67 3/4"
72"	x	70 3/4"	84"	x	70 3/4"	60"	x	70 3/4"
72"	x	75 1/4"	84"	x	75 1/4"	60"	x	75 1/4"
72"	x	80 1/4"	84"	x	80 1/4"	60"	x	80 1/4"

These units can be ordered up to the largest size listed. Notched Panel Charge - \$25.00 Net Charge per Notched Panel.

# PIVOT & SWING DOOR SHOWERS

## P-1500 CONTINUOUS HINGE FRAMELESS SWING DOOR ONLY



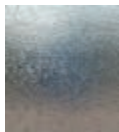
### FEATURES & BENEFITS

- 3/16" standard thick tempered glass
- Pencil polished edges
- Continuous hinge
- 3" handle mounted on glass
- Heavy duty magnetic latch closing mechanism
- Includes assembly and dam strip
- All pivot doors must be measured for the width at the top & bottom
- Overall width includes aluminum
- Daylight opening is about 4 3/8" less than the overall width
- Component packages contain panels
- Available in custom glass sizes and textures
- List prices provided are for standard 3/16" thick glass in our most popular finishes including Chrome, Oil Rubbed Bronze, Brushed Nickel, Polished Brass and Matte Black
- Obscure and Narrow Reed available only in 66 5/8" and 69 5/8"

### GLASS TEXTURES



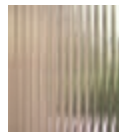
3/16" Clear



3/16" Obscure



3/16" Rain



1/4" Narrow Reed



Pivot Door Handle

### AVAILABLE COLORS



Polished Chrome



Oil Rubbed Bronze



Polished Brass



Matte Black

**NEW**

### WIDTH & HEIGHT OPTIONS

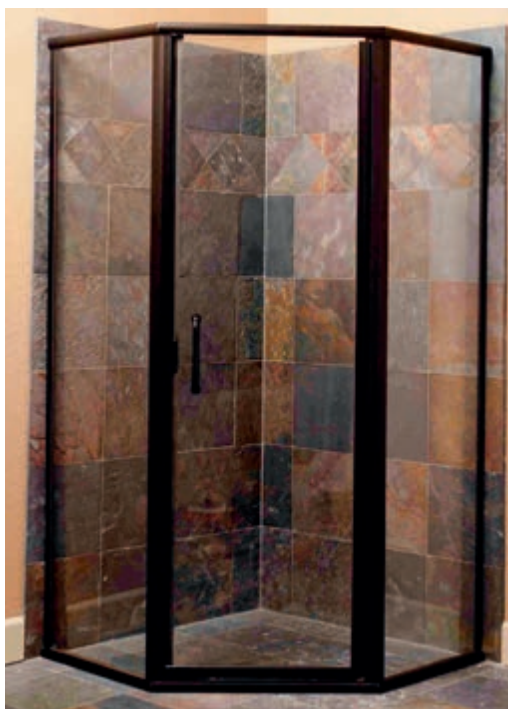
P-1500	Chrome	OB, BN, PB, MBL	P-1500	Chrome	OB, BN, PB, MBL	P-1500	Chrome	OB, BN, PB, MBL
Width x Height	List Price	List Price	Width x Height	List Price	List Price	Width x Height	List Price	List Price
20" - 24" x 66 5/8"	\$220	\$312	20" - 24" x 72 5/8"	\$275	\$390	20" - 24" x 77 5/8"	\$297	\$421
25" - 30" x 66 5/8"	\$250	\$355	25" - 30" x 72 5/8"	\$313	\$444	25" - 30" x 77 5/8"	\$338	\$479
31" - 34" x 66 5/8"	\$270	\$383	31" - 34" x 72 5/8"	\$338	\$479	31" - 34" x 77 5/8"	\$365	\$517
35" - 36" x 66 5/8"	\$295	\$419	35" - 36" x 72 5/8"	\$369	\$524	35" - 36" x 77 5/8"	\$398	\$566
20" - 24" x 69 5/8"	\$253	\$359	20" - 24" x 75 5/8"	\$297	\$421			
25" - 30" x 69 5/8"	\$288	\$408	25" - 30" x 75 5/8"	\$338	\$479			
31" - 34" x 69 5/8"	\$311	\$440	31" - 34" x 75 5/8"	\$365	\$517			
35" - 36" x 69 5/8"	\$339	\$482	35" - 36" x 75 5/8"	\$398	\$566			

For component packages, this door will fit a 69", 72", 75", & 80" overall height.

For custom sized units, or units requiring specialty or non-stock glass, please contact customer service for pricing.



## P-2000 EURO STYLE FRAMELESS SWING DOOR ONLY



8" Back-to-Back Handle

### FEATURES & BENEFITS

- Pencil polished edges
- 1/4" standard thick tempered glass
- Continuous hinge
- 8" euro style mounted handle with 3/4" diameter
- Handles are mounted back-to-back vertically, inside and outside of the unit
- Includes decorative metal washers
- Heavy duty magnetic latch closing mechanism
- Includes assembly and dam strip
- All pivot doors must be measured for the width at the top and bottom
- Overall width includes aluminum
- Daylight opening is about 4 3/8" less than the overall width
- Component packages contain panels
- Available in custom glass sizes and textures
- List prices provided are for standard 1/4" thick glass in our most popular finishes including Chrome, Oil Rubbed Bronze, Brushed Nickel, Polished Brass and Matte Black
- Narrow Reed available only in 66 5/8"

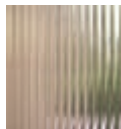
### GLASS TEXTURES



1/4" Clear



1/4" Rain



1/4" Narrow Reed

### AVAILABLE COLORS



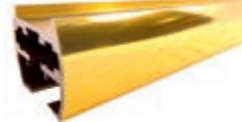
Polished Chrome



Oil Rubbed Bronze



Brushed Nickel



Polished Brass



Matte Black

### WIDTH & HEIGHT OPTIONS

<u>P-2000</u>	<u>Chrome</u>	<u>OB, BN, PB, MBL</u>	<u>P-2000</u>	<u>Chrome</u>	<u>OB, BN, PB, MBL</u>
<u>Width x Height</u>	<u>List Price</u>	<u>List Price</u>	<u>Width x Height</u>	<u>List Price</u>	<u>List Price</u>
20" - 24" x 66 5/8"	\$403	\$572	20" - 24" x 72 5/8"	\$504	\$715
25" - 30" x 66 5/8"	\$436	\$619	25" - 30" x 72 5/8"	\$545	\$774
31" - 34" x 66 5/8"	\$459	\$652	31" - 34" x 72 5/8"	\$574	\$815
35" - 36" x 66 5/8"	\$470	\$667	35" - 36" x 72 5/8"	\$588	\$834
20" - 24" x 69 5/8"	\$463	\$658	20" - 24" x 77 5/8"	\$544	\$772
25" - 30" x 69 5/8"	\$501	\$712	25" - 30" x 77 5/8"	\$589	\$836
31" - 34" x 69 5/8"	\$528	\$750	31" - 34" x 77 5/8"	\$620	\$880
35" - 36" x 69 5/8"	\$541	\$767	35" - 36" x 77 5/8"	\$635	\$900

For component packages, this door will fit a 69", 72", 75", & 80" overall height.

For custom sized units, or units requiring specialty or non-stock glass, please contact customer service for pricing.

# PIVOT & SWING DOOR SHOWERS

## P-2500 EURO STYLE FRAMELESS SWING DOOR ONLY



Image features custom rain glass

### GLASS TEXTURES



1/4" Clear



Combination Pull Handle w/  
Towel Bar

### AVAILABLE COLORS



Polished Chrome



Oil Rubbed Bronze



Brushed Nickel



Polished Brass

### FEATURES & BENEFITS

- 1/4" standard thick tempered glass
- Pencil polished edges
- Continuous hinge
- 3/4" diameter handle is 8" in length and 3/4" diameter towel bar
- Towel bar is mounted horizontally and the handle is mounted vertically
- Includes assembly and dam strip
- All pivot doors must be measured for the width at the top and bottom
- Overall width includes aluminum
- Daylight opening is about 4 3/8" less than the overall width
- Component packages contain panels
- Available in custom glass sizes and textures
- List prices provided are for standard 1/4" thick glass in our most popular finishes including Chrome, Oil Rubbed Bronze, Brushed Nickel, and Polished Brass

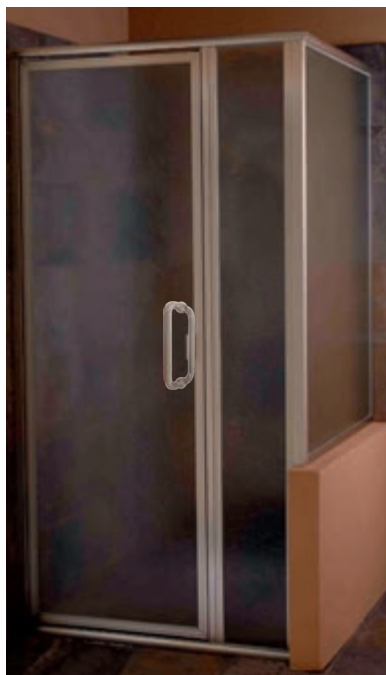
### WIDTH & HEIGHT OPTIONS

P-2500	<u>Chrome</u>	<u>Oil Rubbed Bronze</u>	<u>Brushed Nickel</u>	<u>Polished Brass</u>
<u>Width x Height</u>	<u>List Price</u>	<u>List Price</u>	<u>List Price</u>	<u>List Price</u>
20" - 24" x 66 5/8"	\$463	\$657	\$657	\$657
25" - 30" x 66 5/8"	\$496	\$704	\$704	\$704
31" - 34" x 66 5/8"	\$519	\$737	\$737	\$737
35" - 36" x 66 5/8"	\$530	\$753	\$753	\$753

For component packages, this door will fit within a 69" overall height.

For custom sized units, or units requiring specialty or non-stock glass, please contact customer service for pricing.

## P-3000 CONTINUOUS HINGE FRAMED SWING DOOR ONLY



8" Back-to-Back Handle

### FEATURES & BENEFITS

- 1/4" standard thick tempered glass
- Pencil polished edges
- Continuous hinge
- 3/4" diameter handle is 8" in length and mounted back-to-back vertically, inside and outside of the unit
- Handles include decorative metal washers
- Fully framed
- Includes assembly and dam strip
- All pivot doors must be measured for the width at the top and bottom
- Overall width includes aluminum
- Daylight opening is about 4 3/8" less than the overall width
- Component packages contain panels
- Available in custom glass sizes and textures
- List prices provided are for standard 1/4" thick glass in our most popular finishes including Chrome and Brushed Nickel
- Narrow Reed available only in 67 1/2"

Image shown includes panels

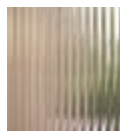
### GLASS TEXTURES



1/4" Clear



1/4" Rain



1/4" Narrow Reed

### AVAILABLE COLORS



Polished Chrome



Brushed Nickel

### WIDTH & HEIGHT OPTIONS

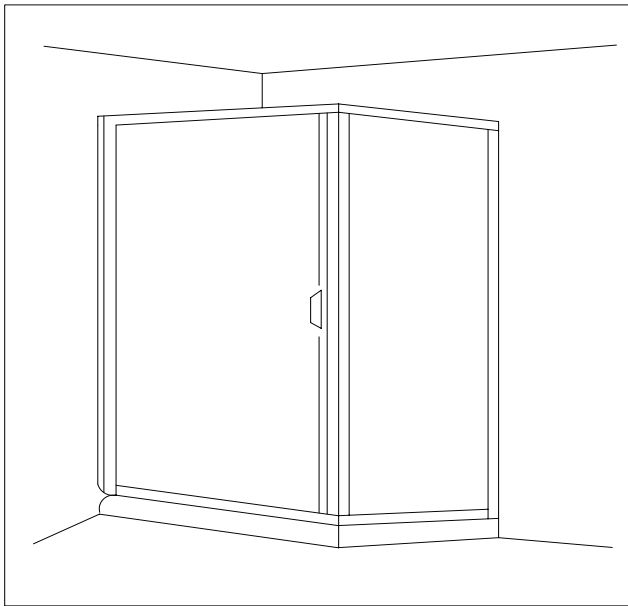
<u>P-3000</u>	<u>Chrome</u>	<u>Brushed Nickel</u>	<u>P-3000</u>	<u>Chrome</u>	<u>Brushed Nickel</u>
<u>Width x Height</u>	<u>List Price</u>	<u>List Price</u>	<u>Width x Height</u>	<u>List Price</u>	<u>List Price</u>
20" - 24" x 67 1/2"	\$275	\$391	20" - 24" x 73 1/2"	\$344	\$488
25" - 30" x 67 1/2"	\$305	\$433	25" - 30" x 73 1/2"	\$381	\$541
31" - 34" x 67 1/2"	\$325	\$462	31" - 34" x 73 1/2"	\$406	\$577
35" - 36" x 67 1/2"	\$350	\$497	35" - 36" x 73 1/2"	\$438	\$622
20" - 24" x 70 1/2"	\$316	\$449	20" - 24" x 78 1/2"	\$371	\$527
25" - 30" x 70 1/2"	\$351	\$498	25" - 30" x 78 1/2"	\$412	\$585
31" - 34" x 70 1/2"	\$374	\$531	31" - 34" x 78 1/2"	\$439	\$623
35" - 36" x 70 1/2"	\$403	\$572	35" - 36" x 78 1/2"	\$473	\$672

For component packages, this door will fit a 69 7/8", 72 7/8", and 80 7/8" overall height.

For custom sized units, or units requiring specialty or non-stock glass, please contact customer service for pricing.

# PIVOT & SWING DOOR SHOWERS

## PIVOT & SWING DOOR COMPONENTS – P-45 (2/3 NEO ANGLE)



### FEATURES & BENEFITS

- P-45 (2/3 Neo Angle)
- 3/16" standard thick tempered glass
- 45 degree return panel
- Measurement describes the front of the unit (door width)
- These units can be ordered up to 80" in height
- This unit can take up to 36" door in width and up to a 36" panel in width (42" on a buttress) for standard pricing
- Anything that requires glass panels over 36" in width (or 42" on a buttress) will be charged as a custom unit
- List prices provided are for the component parts in our most popular finishes including Chrome, Brushed Nickel, Polished Brass and Matte Black
- Oil Rubbed Bronze available in frameless only
- To get a full unit price, the price of a door must be added
- Narrow Reed and Obscure available only in 69"

### GLASS TEXTURES



3/16" Clear   3/16" Obscure   3/16" Rain   1/4" Narrow Reed

### AVAILABLE COLORS



Polished Chrome

Oil Rubbed Bronze

Brushed Nickel

Polished Brass

Matte Black

### WIDTH & HEIGHT OPTIONS

P-45 Pivot Door Components				P-45 Pivot Door Components			
Width x Height	Description	Chrome List Price	OB, BN, PB, MBL List Price	Width x Height	Description	Chrome List Price	OB, BN, PB, MBL List Price
36" x 69"	Frameless	\$243	\$345	36" x 75"	Frameless	\$303	\$431
36" x 69 7/8"	Framed	\$243	\$345 - No PB/ORB/MBL	36" x 75 7/8"	Framed	\$303	\$431 - No PB/ORB/MBL
36" x 69"	Frameless w/ Buttress	\$323	\$425	36" x 75"	Frameless w/ Buttress	\$383	\$511
36" x 69 7/8"	Framed w/ Buttress	\$323	\$425 - No PB/ORB/MBL	36" x 75 7/8"	Framed w/ Buttress	\$383	\$511 - No PB/ORB/MBL
36" x 72"	Frameless	\$279	\$397	36" x 80"	Frameless	\$328	\$466
36" x 72 7/8"	Framed	\$279	\$397 - No PB/ORB/MBL	36" x 80 7/8"	Framed	\$328	\$466 - No PB/ORB/MBL
36" x 72"	Frameless w/ Buttress	\$359	\$477	36" x 80"	Frameless w/ Buttress	\$408	\$546
36" x 72 7/8"	Framed w/ Buttress	\$359	\$477	36" x 80 7/8"	Framed w/ Buttress	\$408	\$546 - No PB/ORB/MBL

For custom sized units, or units requiring specialty or non-stock glass, please contact customer service for pricing. - \$25.00 Net Charge per Notched Panel

## PIVOT & SWING DOOR COMPONENTS – P-90



### FEATURES & BENEFITS

- 3/16" standard thick tempered glass
- 90 degree return panel
- Measurement describes the front of the unit (door width)
- These units can be ordered up to 80" in height
- This unit can take up to 36" door in width and up to a 36" panel in width (42" on a buttress) for standard pricing
- Anything that requires glass panels over 36" in width (or 42" on a buttress) will be charged as a custom unit
- List prices provided are for the component parts in our most popular finishes including Chrome, Brushed Nickel, Polished Brass and Matte Black
- Oil Rubbed Bronze available in frameless only
- To get a full unit price, the price of a door must be added
- Narrow Reed and Obscure available only in 69"

### GLASS TEXTURES



3/16" Clear



3/16" Obscure



3/16" Rain



1/4" Narrow Reed

### AVAILABLE COLORS



Polished Chrome



Oil Rubbed Bronze



Brushed Nickel



Polished Brass



**NEW**

Matte Black

### WIDTH & HEIGHT OPTIONS

P-90 Pivot Door Components				P-90 Pivot Door Components			
Width x Height	Description	Chrome List Price	OB, BN, PB, MBL List Price	Width x Height	Description	Chrome List Price	OB, BN, PB, MBL List Price
36" x 69"	Frameless	\$225	\$320	36" x 75"	Frameless	\$281	\$400
36" x 69 7/8"	Framed	\$225	\$320 - No PB/ORB/MBL	36" x 75 7/8"	Framed	\$281	\$400 - No PB/ORB/MBL
36" x 69"	Frameless w/ Buttress	\$305	\$400	36" x 75"	Frameless w/ Buttress	\$361	\$480
36" x 69 7/8"	Framed w/ Buttress	\$305	\$400 - No PB/ORB/MBL	36" x 75 7/8"	Framed w/ Buttress	\$361	\$480 - No PB/ORB/MBL
36" x 72"	Frameless	\$259	\$368	36" x 80"	Frameless	\$304	\$432
36" x 72 7/8"	Framed	\$259	\$368 - No PB/ORB/MBL	36" x 80 7/8"	Framed	\$304	\$432 - No PB/ORB/MBL
36" x 72"	Frameless w/ Buttress	\$339	\$448	36" x 80"	Frameless w/ Buttress	\$384	\$512
36" x 72 7/8"	Framed w/ Buttress	\$339	\$448 - No PB/ORB/MBL	36" x 80 7/8"	Framed w/ Buttress	\$384	\$512 - No PB/ORB/MBL

For custom sized units, or units requiring specialty or non-stock glass, please contact customer service for pricing. - \$25.00 Net Charge per Notched Panel

# PIVOT & SWING DOOR SHOWERS

## PIVOT & SWING DOOR COMPONENTS – P-90 I



Image Shown:  
P-90I w/ Butress  
with P-2000 Door

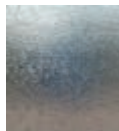
### FEATURES & BENEFITS

- 3/16" standard thick tempered glass
- This unit has an in-line panel and a 90° return panel
- Measurement describes the front of the unit (door and in-line panel)
- These units can be ordered up to 80" in height
- This unit can take up to a 36" door in width and up to a 36" panel in width (42" on a butress) for standard pricing
- Anything that requires glass panels over 36" in width (or 42" on a butress) will be charged as a custom unit
- List prices provided are for the component parts in our most popular finishes including Polished Chrome, Brushed Nickel, Polished Brass and Matte Black
- Polished Brass, Oil Rubbed Bronze and Matte Black available in frameless only
- Narrow Reed and Obscure available in 69" only
- To get a full unit price, the price of a door must be added

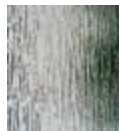
### GLASS TEXTURES



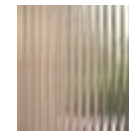
3/16" Clear



3/16" Obscure

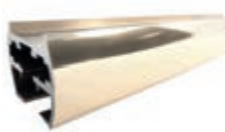


3/16" Rain



1/4" Narrow Reed

### AVAILABLE COLORS



Polished Chrome



Oil Rubbed Bronze



Brushed Nickel



Polished Brass



Matte Black

**NEW**

### WIDTH & HEIGHT OPTIONS

#### P-90I Pivot Door Components

Width x Height	Description	Chrome List	OB, BN, PB, MBL
		Price	List Price
42" x 69"	Frameless	\$232	\$329
42" x 69 7/8"	Framed	\$232	\$329 - No PB/ORB/MBL
60" x 69"	Frameless	\$295	\$419
60" x 69 7/8"	Framed	\$295	\$419 - No PB/ORB/MBL
42" x 69"	Frameless w/ Butress	\$312	\$409
42" x 69 7/8"	Framed w/ Butress	\$312	\$409 - No PB/ORB/MBL
60" x 69"	Frameless w/ Butress	\$375	\$499
60" x 69 7/8"	Framed w/ Butress	\$375	\$499 - No PB/ORB/MBL
42" x 72"	Frameless	\$267	\$378
42" x 72 7/8"	Framed	\$267	\$378 - No PB/ORB/MBL
60" x 72"	Frameless	\$339	\$482
60" x 72 7/8"	Framed	\$339	\$482 - No PB/ORB/MBL
42" x 72"	Frameless w/ Butress	\$347	\$458
42" x 72 7/8"	Framed w/ Butress	\$347	\$458 - No PB/ORB/MBL
60" x 72"	Frameless w/ Butress	\$419	\$562
60" x 72 7/8"	Framed w/ Butress	\$419	\$562 - No PB/ORB/MBL

#### P-90I Pivot Door Components

Width x Height	Description	Chrome	OB, BN, PB, MBL
		List Price	List Price
42" x 75"	Frameless	\$290	\$411
42" x 75 7/8"	Framed	\$290	\$411 - No PB/ORB/MBL
60" x 75"	Frameless	\$369	\$524
60" x 75 7/8"	Framed	\$369	\$524 - No PB/ORB/MBL
42" x 75"	Frameless w/ Butress	\$370	\$491
42" x 75 7/8"	Framed w/ Butress	\$370	\$491 - No PB/ORB/MBL
60" x 75"	Frameless w/ Butress	\$449	\$604
60" x 75 7/8"	Framed w/ Butress	\$449	\$604 - No PB/ORB/MBL
42" x 80"	Frameless	\$313	\$444
42" x 80 7/8"	Framed	\$313	\$444 - No PB/ORB/MBL
60" x 80"	Frameless	\$398	\$566
60" x 80 7/8"	Framed	\$398	\$566 - No PB/ORB/MBL
42" x 80"	Frameless w/ Butress	\$398	\$524
42" x 80 7/8"	Framed w/ Butress	\$398	\$524 - No PB/ORB/MBL
60" x 80"	Frameless w/ Butress	\$478	\$646
60" x 80 7/8"	Framed w/ Butress	\$478	\$646 - No PB/ORB/MBL

For custom sized units, or units requiring specialty or non-stock glass, please contact customer service for pricing - \$25.00 Net Charge per Notched Panel

## PIVOT & SWING DOOR COMPONENTS – P-135 (NEO ANGLE)



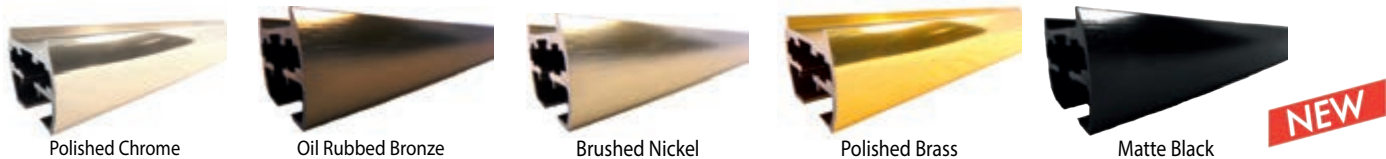
### FEATURES & BENEFITS

- P-135 (Neo Angle)
- 3/16" standard thick tempered glass
- This unit has two 45 degree return panels
- Measurement describes the total length of both panels (45 degree panels)
- These units can be ordered up to 80" in height
- This unit can take up to 36" door in width, up to a 36" panel in width, and up to a 42" on buttress for standard pricing
- Anything that requires glass panels over 36" in width will be charged as a custom unit
- List prices provided are for the component parts in our most popular finishes including Chrome, Brushed Nickel, Polished Brass and Matte Black
- Oil Rubbed Bronze available in frameless only
- To get a full unit price, the price of a door must be added
- Narrow Reed and Obscure available only in 69"
- For custom sized units, or units requiring specialty or non-stock glass, please contact customer service for pricing - \$25.00 net charge per notched panel

### GLASS TEXTURES



### AVAILABLE COLORS



### WIDTH & HEIGHT OPTIONS

Width x Height	Description	Chrome List Price	OB, BN, PB, MBL List Price	Width x Height	Description	Chrome List Price	OB, BN, PB, MBL List Price
60" x 69"	Frameless	\$292	\$415	60" x 75"	Frameless	\$365	\$519
60" x 69 7/8"	Framed	\$292	\$415 - No PB/ORB/MBL	60" x 75 7/8"	Framed	\$365	\$519 - No PB/ORB/MBL
60" x 69"	Frameless w/ Buttress	\$372	\$495	60" x 75"	Frameless w/ Buttress	\$445	\$599
60" x 69 7/8"	Framed w/ Buttress	\$372	\$495 - No PB/ORB/MBL	60" x 75 7/8"	Framed w/ Buttress	\$445	\$599 - No PB/ORB/MBL
60" x 69"	Frameless w/ 2 Buttresses	\$452	\$575	60" x 75"	Frameless w/ 2 Buttresses	\$525	\$679
60" x 69 7/8"	Framed w/ 2 Buttresses	\$452	\$575 - No PB/ORB/MBL	60" x 75 7/8"	Framed w/ 2 Buttresses	\$525	\$679 - No PB/ORB/MBL
60" x 72"	Frameless	\$336	\$477	60" x 80"	Frameless	\$394	\$560
60" x 72 7/8"	Framed	\$336	\$477 - No PB/ORB/MBL	60" x 80 7/8"	Framed	\$394	\$560 - No PB/ORB/MBL
60" x 72"	Frameless w/ Buttress	\$416	\$557	60" x 80"	Frameless w/ Buttress	\$474	\$640
60" x 72 7/8"	Framed w/ Buttress	\$416	\$557 - No PB/ORB/MBL	60" x 80 7/8"	Framed w/ Buttress	\$474	\$640 - No PB/ORB/MBL
60" x 72"	Frameless w/ 2 Buttresses	\$496	\$637	60" x 80"	Frameless w/ 2 Buttresses	\$554	\$720
60" x 72 7/8"	Framed w/ 2 Buttresses	\$496	\$637 - No PB/ORB/MBL	60" x 80 7/8"	Framed w/ 2 Buttresses	\$554	\$720 - No PB/ORB/MBL

# PIVOT & SWING DOOR SHOWERS

## PIVOT & SWING DOOR COMPONENTS – P-180



### FEATURES & BENEFITS

- 3/16" standard thick tempered glass
- This unit has an in-line panel
- Measurement describes the front of the unit (door and in-line panel)
- This unit can take up to 36" door in width, up to a 36" panel in width, and up to a 42" on a buttress for standard pricing
- Anything that requires glass panels over 36" in width will be charged as a custom unit
- List prices provided are for the component parts in our most popular finishes including Chrome, Polished Brass, Brushed Nickel and Matte Black
- Oil Rubbed Bronze available in frameless only
- To get a full unit price, the price of a door must be added
- Obscure and Narrow Reed only available in 69"

### WIDTH & HEIGHT OPTIONS

<u>Width x Height</u>	<u>Description</u>	<u>Chrome List Price</u>	<u>OB,BN,PB,MBL List Price</u>	<u>Width x Height</u>	<u>Description</u>	<u>Chrome List Price</u>	<u>OB, BN, PB, MBL List Price</u>
36" x 69"	Frameless	\$116	\$164	36" x 72"	Frameless	\$134	\$189
36" x 69 7/8"	Framed	\$116	\$164 - No PB/ORB/MBL	36" x 72 7/8"	Framed	\$134	\$189 - No PB/ORB/MBL
42" x 69"	Frameless	\$133	\$190	42" x 72"	Frameless	\$153	\$218
42" x 69 7/8"	Framed	\$133	\$190 - No PB/ORB/MBL	42" x 72 7/8"	Framed	\$153	\$218 - No PB/ORB/MBL
48" x 69"	Frameless	\$152	\$215	48" x 72"	Frameless	\$175	\$247
48" x 69 7/8"	Framed	\$152	\$215 - No PB/ORB/MBL	48" x 72 7/8"	Framed	\$175	\$247 - No PB/ORB/MBL
60" x 69"	Frameless	\$176	\$250	60" x 72"	Frameless	\$202	\$287
60" x 69 7/8"	Framed	\$176	\$250 - No PB/ORB/MBL	60" x 72 7/8"	Framed	\$202	\$287 - No PB/ORB/MBL
72" x 69"	Frameless	\$243	\$345	72" x 72"	Frameless	\$279	\$397
72" x 69 7/8"	Framed	\$243	\$345 - No PB/ORB/MBL	72" x 72 7/8"	Framed	\$279	\$397 - No PB/ORB/MBL
36" x 69"	Frameless w/ Buttress	\$196	\$244	36" x 72"	Frameless w/ Buttress	\$214	\$269
36" x 69 7/8"	Framed w/ Buttress	\$196	\$244 - No PB/ORB/MBL	36" x 72 7/8"	Framed w/ Buttress	\$214	\$269 - No PB/ORB/MBL
42" x 69"	Frameless w/ Buttress	\$213	\$270	42" x 72"	Frameless w/ Buttress	\$233	\$298
42" x 69 7/8"	Framed w/ Buttress	\$213	\$270 - No PB/ORB/MBL	42" x 72 7/8"	Framed w/ Buttress	\$233	\$298 - No PB/ORB/MBL
48" x 69"	Frameless w/ Buttress	\$232	\$295	48" x 72"	Frameless w/ Buttress	\$255	\$327
48" x 69 7/8"	Framed w/ Buttress	\$232	\$295 - No PB/ORB/MBL	48" x 72 7/8"	Framed w/ Buttress	\$255	\$327 - No PB/ORB/MBL
60" x 69"	Frameless w/ Buttress	\$256	\$330	60" x 72"	Frameless w/ Buttress	\$282	\$367
60" x 69 7/8"	Framed w/ Buttress	\$256	\$330 - No PB/ORB/MBL	60" x 72 7/8"	Framed w/ Buttress	\$282	\$367 - No PB/ORB/MBL
72" x 69"	Frameless w/ Buttress	\$323	\$425	72" x 72"	Frameless w/ Buttress	\$359	\$477
72" x 69 7/8"	Framed w/ Buttress	\$323	\$425 - No PB/ORB/MBL	72" x 72 7/8"	Framed w/ Buttress	\$359	\$477 - No PB/ORB/MBL



## GLASS TEXTURES



3/16" Clear



3/16" Obscure



3/16" Rain



1/4" Narrow Reed

## AVAILABLE COLORS



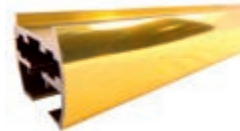
Polished Chrome



Oil Rubbed Bronze



Brushed Nickel



Polished Brass



Matte Black

<u>Width x Height</u>	<u>Description</u>	<u>Chrome List Price</u>	<u>OB,BN,PB,MBL List Price</u>	<u>Width x Height</u>	<u>Description</u>	<u>Chrome List Price</u>	<u>OB,BN,PB,MBL List Price</u>
36" x 75"	Frameless	\$145	\$206	36" x 80"	Frameless	\$157	\$222
36" x 75 7/8"	Framed	\$145	\$206 - No PB/ORB/MBL	36" x 80 7/8"	Framed	\$157	\$222 - No PB/ORB/MBL
42" x 75"	Frameless	\$167	\$237	42" x 80"	Frameless	\$180	\$256
42" x 75 7/8"	Framed	\$167	\$237 - No PB/ORB/MBL	42" x 80 7/8"	Framed	\$180	\$256 - No PB/ORB/MBL
48" x 75"	Frameless	\$190	\$269	48" x 80"	Frameless	\$205	\$290
48" x 75 7/8"	Framed	\$190	\$269 - No PB/ORB/MBL	48" x 80 7/8"	Framed	\$205	\$290 - No PB/ORB/MBL
60" x 75"	Frameless	\$220	\$312	60" x 80"	Frameless	\$238	\$337
60" x 75 7/8"	Framed	\$220	\$312 - No PB/ORB/MBL	60" x 80 7/8"	Framed	\$238	\$337 - No PB/ORB/MBL
72" x 75"	Frameless	\$303	\$431	72" x 80"	Frameless	\$328	\$466
72" x 75 7/8"	Framed	\$303	\$431 - No PB/ORB/MBL	72" x 80 7/8"	Framed	\$328	\$466 - No PB/ORB/MBL
36" x 75"	Frameless w/ Buttress	\$225	\$286	36" x 80"	Frameless w/ Buttress	\$237	\$302
36" x 75 7/8"	Framed w/ Buttress	\$225	\$286 - No PB/ORB/MBL	36" x 80 7/8"	Framed w/ Buttress	\$237	\$302 - No PB/ORB/MBL
42" x 75"	Frameless w/ Buttress	\$247	\$317	42" x 80"	Frameless w/ Buttress	\$260	\$336
42" x 75 7/8"	Framed w/ Buttress	\$247	\$317 - No PB/ORB/MBL	42" x 80 7/8"	Framed w/ Buttress	\$260	\$336 - No PB/ORB/MBL
48" x 75"	Frameless w/ Buttress	\$270	\$349	48" x 80"	Frameless w/ Buttress	\$285	\$370
48" x 75 7/8"	Framed w/ Buttress	\$270	\$349 - No PB/ORB/MBL	48" x 80 7/8"	Framed w/ Buttress	\$285	\$370 - No PB/ORB/MBL
60" x 75"	Frameless w/ Buttress	\$300	\$392	60" x 80"	Frameless w/ Buttress	\$318	\$417
60" x 75 7/8"	Framed w/ Buttress	\$300	\$392 - No PB/ORB/MBL	60" x 80 7/8"	Framed w/ Buttress	\$318	\$417 - No PB/ORB/MBL
72" x 75"	Frameless w/ Buttress	\$383	\$511	72" x 80"	Frameless w/ Buttress	\$408	\$546
72" x 75 7/8"	Framed w/ Buttress	\$383	\$511 - No PB/ORB/MBL	72" x 80 7/8"	Framed w/ Buttress	\$408	\$546 - No PB/ORB/MBL

For custom sized units, or units requiring specialty or non-stock glass, please contact customer service for pricing. - \$25.00 Net Charge per Notched Panel

# HEAVY GLASS UNITS

## HEAVY GLASS FEATURES

Wardrobe & Bath Specialties stocks over 1,000 sizes of 3/8" glass and a wide range of doors and panels to choose from. We can create standard or custom configurations that capture the latest design trends. Our skilled customer service team is trained to supply custom glass patterns and types upon request. We manufacture and carry a variety of finishes along with custom parts as requested. All of our stock sizes may be viewed and purchased by visiting our website, or simply contact customer service. We are dedicated to providing all of our customers with quality products at a competitive price.

## HEAVIES AT-A-GLANCE

---

### INVENTORY

- Over 1,000 sizes in stock in 3/8" glass including a wide range of doors & panels

### DESIGN

- Standard or custom configurations
- Quality hardware available in a variety of finishes

### CUSTOMER SERVICE

- Our skilled customer service team will confirm your specifications, help you build your pattern, provide you with a quote, and place your order



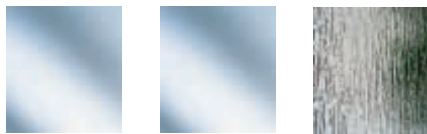
## HEAVY GLASS FEATURES



### FEATURES & BENEFITS

- 3/8" standard thick tempered glass
- Flat polished edges
- Doors are fabricated with two 3" hinge cut-outs and two vertical 1/2" holes for an 8" handle
- Two 50lb. capacity hinges
- 8" euro style handles mounted inside and out
- Customize your unit with a choice of metal finishes
- Additional glass thicknesses and textures as well as custom parts or finishes available upon request, contact customer service for any questions, pricing, or additional information

### STANDARD GLASS TEXTURES



3/8" Clear

1/2" Clear

3/8" Rain

### AVAILABLE COLORS



Polished Brass (PB)



Polished Chrome (PC)



Brushed Nickel (BN)



Oil Rubbed Bronze (OB)



Antique Brass (AB)



Polished Nickel (PN)



Satin Nickel (SN)



Matte Black (MLB)



# HEAVY GLASS UNITS

## HEAVY GLASS CONFIGURATIONS

H-901



H-901 Featuring Chrome Fixtures



Bath Screen Installed by Don's Mobile Glass



H-135 Image Provided by VDM Glass



7000 Series



## HEAVY GLASS CONFIGURATIONS

H-135



H-135 Custom Steam Unit, Image Provided by VDM Glass



H-90I



H-90I Featuring Chipped Top



H-135



## HEAVY GLASS UNITS

### THE 6000 SERIES - 1/2" GLASS FRAMELESS SLIDING SHOWER DOOR

- The WBS 6000 Series is a frameless sliding door with one stationery panel for a 180° installation
- It features anti-jump gliding and precision rollers
- The 6000 has no header and utilizes a top-mounted center guide, 2 adjustable bottom rollers, 2 wall mount brackets, a bottom track and 5/8" u-channel
- The 6000 Series was designed by WBS using years of research and development to secure the highest quality materials were used including a handle that is specifically made for 1/2" glass
- Available in PC, BN, & OB and all component parts are included



## THE 6000 SERIES - AT-A-GLANCE

### NO HEADER

- The 6000 features a frameless look
- Uses a single top mount center guide

### 1/2" GLASS - 180° ONLY

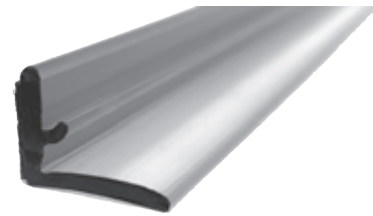
- The 6000 is designed for heavy 1/2" glass
- Use for 180° openings only

### A HANDLE UNIQUE TO WBS

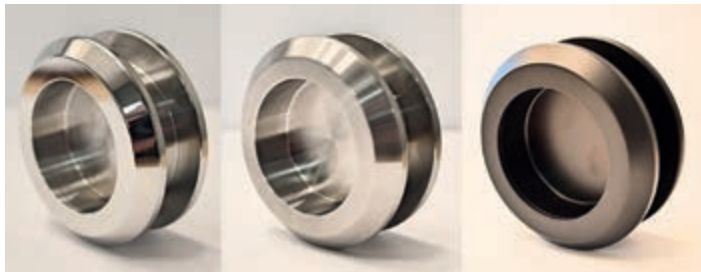
- A handle designed & manufactured by WBS

### ALL COMPONENT PARTS ARE INCLUDED

- 2 adjustable bottom rollers
  - 2 wall mount brackets
  - Center guide
  - Bottom track
  - 5/8" u-channel
  - Handle designed for 1/2" glass, exclusively manufactured by WBS
  - L-Jamb Polycarbonate with adhesive
  - Available in polished chrome, brushed nickel, and oil rubbed bronze
- Bottom rolling unit with one stationary panel
  - Bottom track glued with VHB tape
  - Guide rides on the door
  - Fillers available for uneven surface



L-Jamb Polycarbonate with adhesive back



6000 Series Handle  
Unique to WBS



6000 Series Adjustable Bottom Roller  
2 rollers included



6000 Series Center Guide  
Mounted to the top



6000 Series Wall Mount Brackets  
2 brackets included

## HEAVY GLASS UNITS

### THE 7000 SERIES - 3/8" GLASS BARNDOOR SLIDER

- The New WBS 7000 Series is a Barndoor Style Slider available in dual or single slide
- Used for a 180° installation
- It features anti-jump gliding and precision rollers
- The 7000 Series was designed by WBS to satisfy the modern, Barndoor look that our customers want
- The 7000 Series is sold as a complete unit with all components and 3/8" glass
- Available in polished chrome and brushed nickel





## THE 7000 SERIES - AT-A-GLANCE

### ALL COMPONENT PARTS INCLUDED

- Barndoor frameless look with top-rollers
- Dual & Single Slide
- Stainless steel hardware
- Only approx. 5/8" gap between the glass
- Handle designed for 3/8" glass, exclusively manufactured by WBS
- L-Jamb Polycarbonate with adhesive back
- Available in polished chrome and brushed nickel



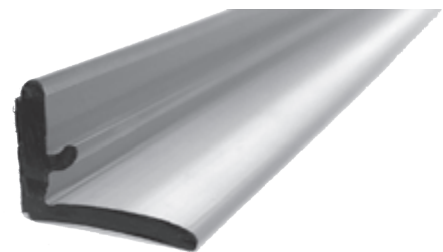
7000 Series Top Rollers



7000 Series Wall Mount Bracket



7000 Series Handle



L-Jamb Polycarbonate with adhesive back

# HEAVY GLASS HINGES

## STANDARD HINGES

- All WBS Standard Hinges have a 40lb capacity per hinge & a closing position of ( 0°)
- Hinges are made of solid brass and come in a variety of finishes including (PC, BN, OB, AB, PN, SN, PB)
- Hinge swings 90 degrees in and 90 degrees out
- Self-centering when within 15 degrees of closed position
- Requires cut-outs in glass
- Includes gaskets, screws, and glass fabrication template
- Reversible pin with 5 degrees offset option on all hinges

### SHORT PLATE

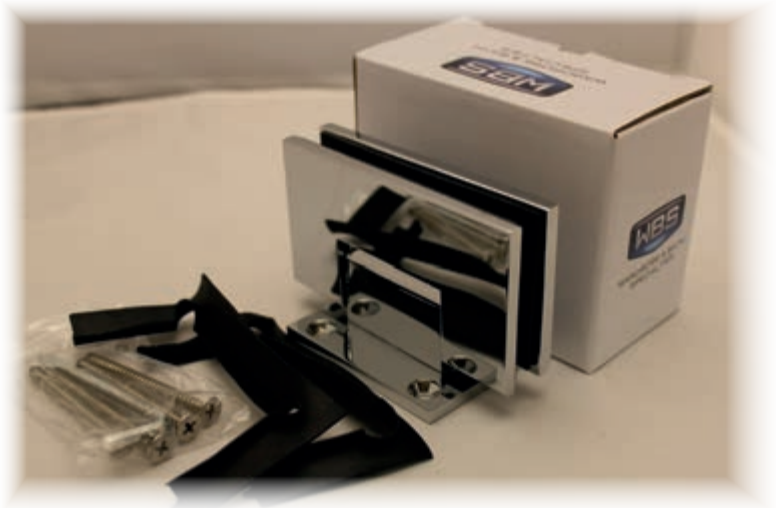
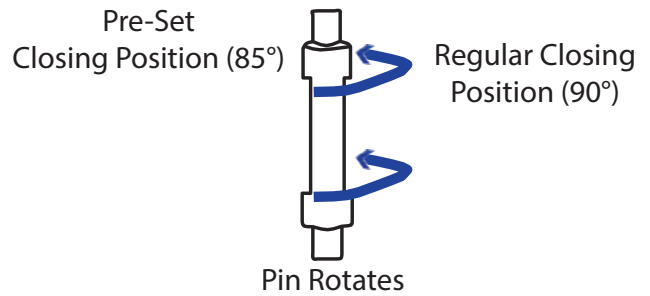
- Glass-to-wall installation
- Allows for flexibility in the adjustment of the glass all the way to the wall

### FULL PLATE

- Allows for more space between screw holes maximizing door width

### OFFSET PLATE

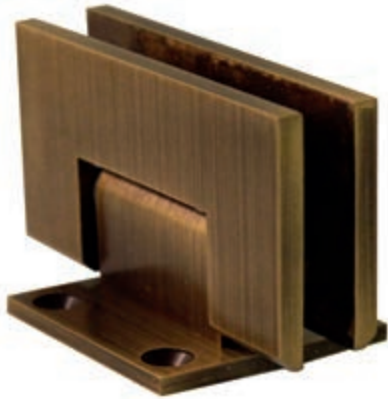
- Plate mounted flush with front of glass
- Majority of plate is inside the shower



FOR HINGE:	MAXIMUM DOOR CAPACITY	FOR 3/8" (10 MM)		FOR 1/2" (12 MM)	
Short Plate	-	Door Weight	Door Width	Door Weight	Door Width
	2 Hinges	80 lbs (36 kg)	28" (711 mm)	80 lbs (36 kg)	28" (711 mm)
FOR HINGE:	MAXIMUM DOOR CAPACITY	FOR 3/8" (10 MM)		FOR 1/2" (12 MM)	
Full Plate	2 Hinges	80 lbs (36 kg)	28" (711 mm)	80 lbs (36 kg)	28" (711 mm)
	3 Hinges	Do Not Use for these hinges			
FOR HINGE:	MAXIMUM DOOR CAPACITY	FOR 3/8" (10 MM)		FOR 1/2" (12 MM)	
Offset Plate	-	Door Weight	Door Width	Door Weight	Door Width
	2 Hinges	80 lbs (36 kg)	28" (711 mm)	80 lbs (36 kg)	28" (711 mm)

## LAGUNA

## MARINA



Laguna Standard w/ Short Plate  
Antique Brass  
HG-LA-SP



Marina Standard w/ Short Plate  
Polished Nickel  
HG-MA-SP



Laguna Standard w/ Full Plate  
Polished Chrome  
HG-LA-FP



Marina Standard w/ Full Plate  
Brushed Nickel  
HG-MA-FP



Laguna Standard w/ Offset Plate  
Oil Rubbed Bronze  
HG-LA-OP



Marina Standard w/ Offset Plate  
Satin Nickel  
HG-MA-OP

# HEAVY GLASS HINGES

## HEAVY HINGES

- All WBS Heavy Hinges have a 50lb capacity per hinge & a closing position of ( 0°)
- Hinges are made of solid brass and come in a variety of finishes including (PC, BN, OB, AB, PN, SN, PB)
- Hinge swings 90 degrees in and 90 degrees out
- Self-centering when within 15 degrees of closed position
- Requires mouse ear cut-outs or square cut-outs in the glass (remove pins to fit square cut-outs)
- Includes gaskets, screws, and glass fabrication template
- Reversible pin with 5 degrees offset option on all hinges

### SHORT PLATE

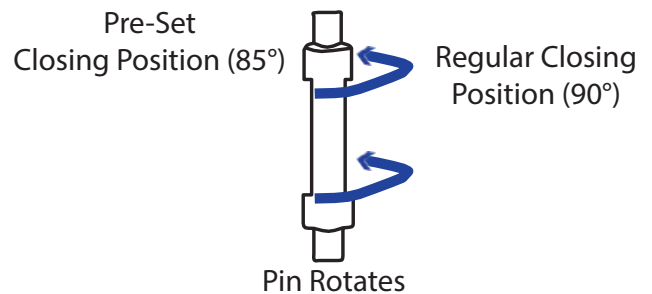
- Glass-to-wall installation
- Allows for flexibility in the adjustment of the glass all the way to the wall

### FULL PLATE

- Allows for more space between screw holes maximizing door width

### OFFSET PLATE

- Plate mounted flush with front of glass
- Majority of plate is inside the shower



FOR HINGE:	MAXIMUM DOOR CAPACITY	FOR 3/8" (10 MM)		FOR 1/2" (12 MM)	
Short Plate	-	Door Weight	Door Width	Door Weight	Door Width
	2 Hinges	100 lbs (45 kg)	34" (864 mm)	100 lbs (45 kg)	32" (813 mm)
FOR HINGE:	MAXIMUM DOOR CAPACITY	FOR 3/8" (10 MM)		FOR 1/2" (12 MM)	
Full Plate	2 Hinges	110 lbs (50 kg)	36" (914 mm)	110 lbs (50 kg)	36" (914 mm)
	3 Hinges	Do Not Use for these hinges			
FOR HINGE:	MAXIMUM DOOR CAPACITY	FOR 3/8" (10 MM)		FOR 1/2" (12 MM)	
Offset Plate	-	Door Weight	Door Width	Door Weight	Door Width
	2 Hinges	100 lbs (45 kg)	34" (864 mm)	100 lbs (45 kg)	32" (813 mm)

## ATLANTIC

## PACIFIC



Atlantic Heavy w/ Short Plate  
Polished Brass  
HG-AT-SP



Pacific Heavy w/ Short Plate  
Antique Brass  
HG-PA-SP



Atlantic Heavy w/ Full Plate  
Satin Nickel  
HG-AT-FP



Pacific Heavy w/ Full Plate  
Polished Nickel  
HG-PA-FP



Atlantic Heavy w/ Offset Plate  
Antique Brass  
HG-AT-OP



Pacific Heavy w/ Offset Plate  
Satin Nickel  
HG-PA-OP

# HEAVY GLASS HINGES

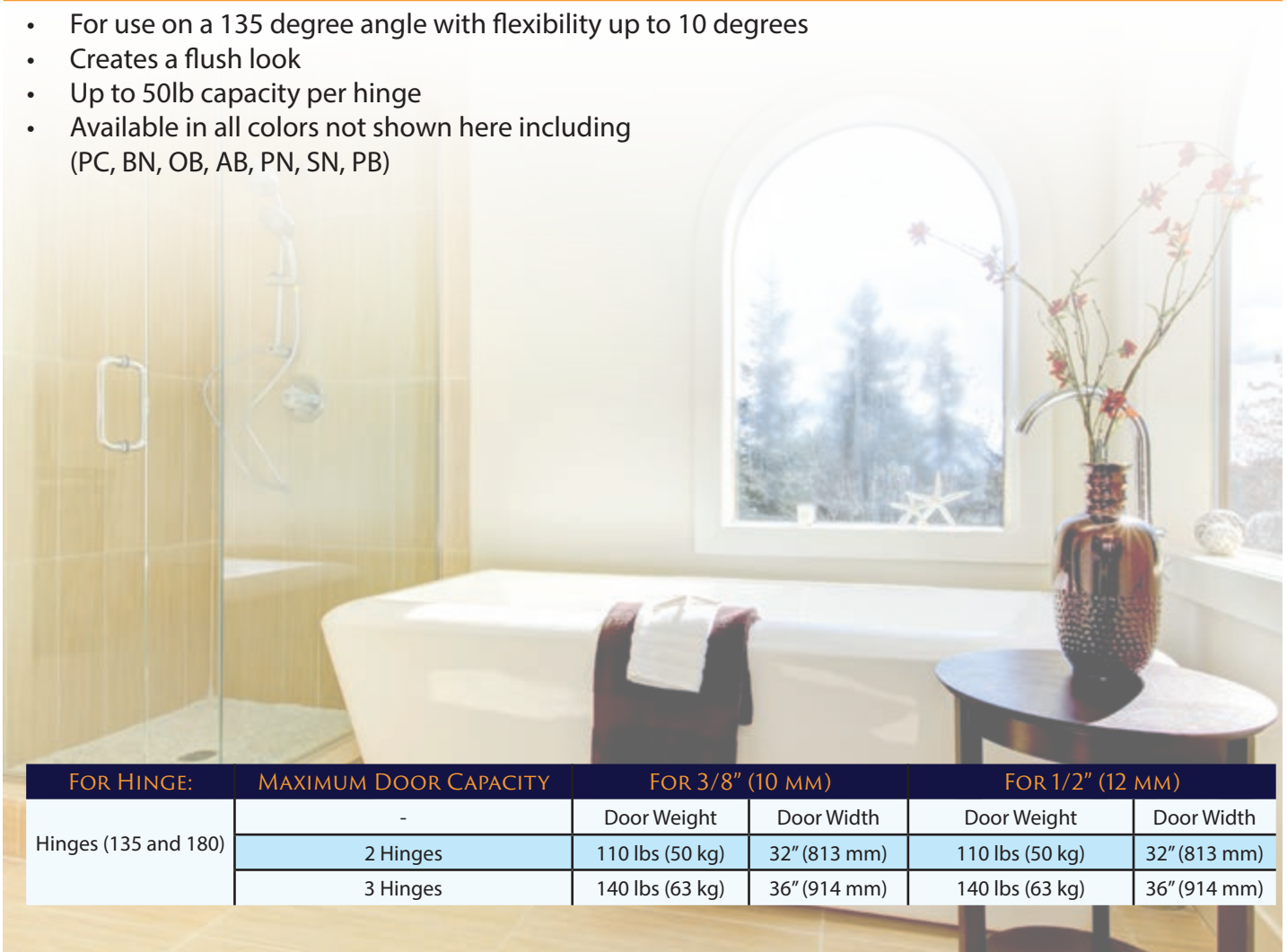
## ADJUSTABLE HEAVY W/ SHORT PLATE

- The adjustable heavy w/ short plate is unique to WBS
- Hinges have a 50lb capacity per hinge & a closing position of ( 0°)
- Hinges are made of solid brass and come in a variety of finishes including (PC, BN, OB, AB, PN, SN, PB, and MBL)
- For use on a 90 degree angle with flexibility from 0 to 90 degrees
- Creates a flush look
- Hinge swings 90 degrees in and 90 degrees out
- Self-centering when within 15 degrees of closed position
- Requires rabbit ear cut-outs or square cut-outs in the glass (remove pins to fit square cut-outs)
- Includes gaskets, screws, and glass fabrication template
- Reversible pin with 5 degrees offset option on all hinges

FOR HINGE:	MAXIMUM DOOR CAPACITY	FOR 3/8" (10 MM)		FOR 1/2" (12 MM)	
Adjustable w/ Short Plate	-	Door Weight	Door Width	Door Weight	Door Width
	2 Hinges	100 lbs (45 kg)	34" (864 mm)	100 lbs (45 kg)	32" (813 mm)

## 135 & 180 ATLANTIC AND PACIFIC HINGES

- For use on a 135 degree angle with flexibility up to 10 degrees
- Creates a flush look
- Up to 50lb capacity per hinge
- Available in all colors not shown here including (PC, BN, OB, AB, PN, SN, PB)



FOR HINGE:	MAXIMUM DOOR CAPACITY	FOR 3/8" (10 MM)		FOR 1/2" (12 MM)	
Hinges (135 and 180)	-	Door Weight	Door Width	Door Weight	Door Width
	2 Hinges	110 lbs (50 kg)	32" (813 mm)	110 lbs (50 kg)	32" (813 mm)
	3 Hinges	140 lbs (63 kg)	36" (914 mm)	140 lbs (63 kg)	36" (914 mm)

## ATLANTIC

## PACIFIC

NEW



Atlantic Adjustable Heavy w/ Short Plate  
Matte Black  
HG-AT-MBL



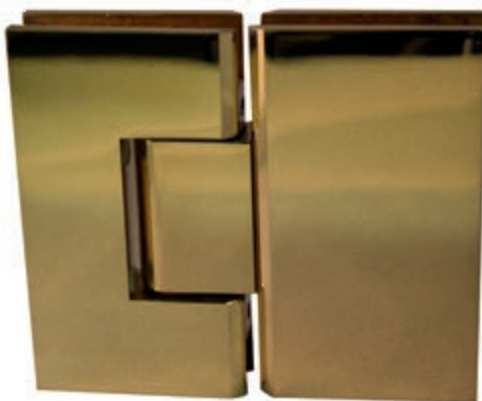
Pacific Adjustable Heavy w/ Short Plate  
Polished Nickel  
HG-PA-ASP



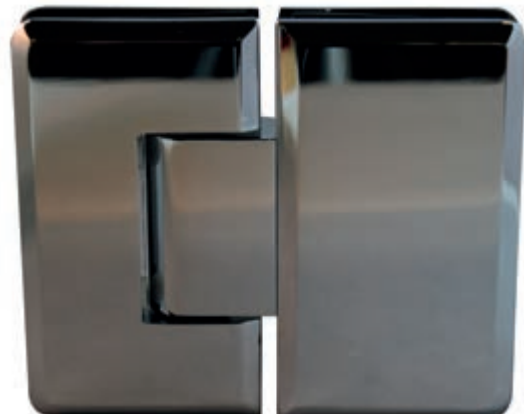
Atlantic 135 Heavy Duty Hinge  
Antique Brass  
HG-AT-135



Pacific 135 Heavy Duty Hinge  
Brushed Nickel  
HG-PA-135



Atlantic 180 Heavy Duty Hinge  
Polished Brass  
HG-AT-180



Pacific 180 Heavy Duty Hinge  
Polished Chrome  
HG-PA-180

# WBS EZ HINGE & BAYVIEW PIVOT HINGE

## WBS EZ HINGE APPLICATION

- WBS EZ Hinge for use on a heavy glass pivot door configuration with the support of a header
- No drilling required and significantly reduces install time
- For use at the top of door only
- For bottom, use in combination with Bayview Pivot Hinge
- EZ Hinge and EZ Header Insert purchased separately
- Comes with EZ Hinge Insert
- Available in 3 colors (PC, OB, BN)



EZ Hinge  
Brushed Nickel  
HG-EZ



## BAYVIEW PIVOT HINGE APPLICATION

- Bayview Pivot Hinges are made of solid brass and feature beveled edges
- Hinge swings in full rotation and is self-centering when within 15 degrees of closed position
- Requires cut-outs in glass
- Includes gaskets, screws, two anchors, and glass fabrication template
- Available in all colors not shown here including (PC, BN, OB, AB, PN, SN, PB)
- For bottom only



Bayview Hinge  
Polished Chrome  
HG-BV

MAXIMUM DOOR CAPACITY		FOR 3/8" (10 MM)	
	Door Weight	Door Width	
2 Pivot Hinges	100 lbs (45 kg)	31" (787 mm)	

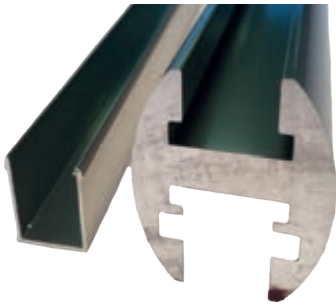
\* Note: Do not exceed maximum door weight or width.



## HEADER KIT

---

- For glass thickness 5/16" (8 mm) to 1/2" (12 mm)
- Snap-in filler insert and glazing vinyl for door pocket included
- Available in all colors not shown here including (PC, BN, OB)



EZ Header with Insert  
HK-EZ



3/8" WBS EZ-Header Glazing Vinyl  
VL-EHG

## BRACKETS FOR USE WITH EZ HEADER KIT

---



135 Corner Bracket  
Polished Brass  
BR-135



Wall Mount Bracket  
Polished Brass  
BR-WM



90 Corner Bracket  
Polished Brass  
BR-90



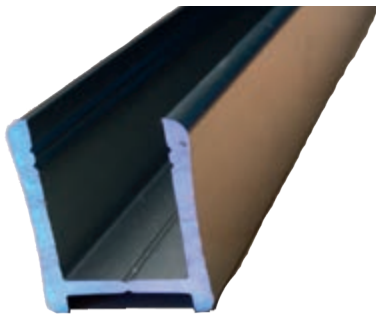
Adjustable Header Bracket  
Polished Brass  
BR-AH

# U-CHANNELS, J-MOLDS & L-BAR

## U-CHANNELS

---

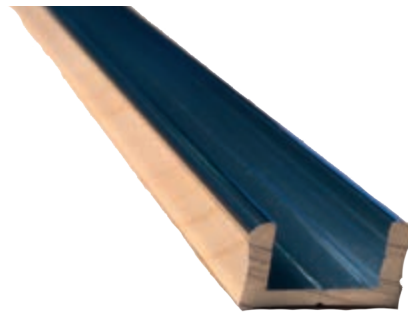
- For glass thickness 3/8" (10 mm) and 1/2" (12 mm)
- Available in all colors not shown here including (PC, BN, OB, AB, PN, SN, PB)\*
- The 3/8" medium is available in PC and BN only\*



3/8" High  
UC-38HP



3/8" Medium  
(only in 3/8")  
UC-38MP



3/8" Low  
UC-38LP

## J-MOLDS & L-BAR

---

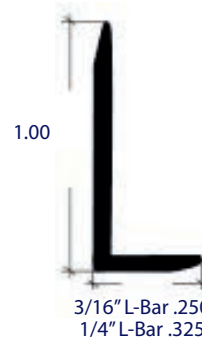
- For glass 3/16" and 1/4" mirror
- Available in 12' 4"
- J-Mold available in PC, BN, OB, and PB
- L-Bar available in PC



3/8" J-Mold  
JM-38



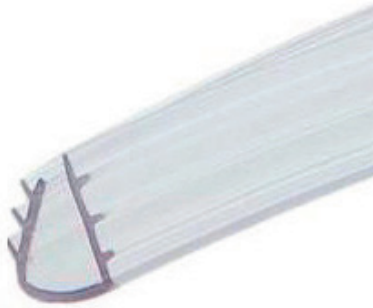
5/8" J-Mold  
JM-58



3/16 or 1/4" L-Bar  
LB-CH

## VINYL

- Clear glazing vinyl secures glass inside the WBS EZ-Header
- Stock length is 108" (2.74 m)



3/8" WBS EZ-Header Glazing Vinyl  
VL-EHG

## SETTING BLOCKS

- Clear setting blocks are used for leveling fixed glass panels
- All Setting Blocks come in bags of 100 pieces
- Available in 1/8" (3 mm) x 1/4" (6 mm) x 2" (51 mm)



1/8" x 1/4" Setting Block  
ST-18

# HEAVY GLASS CLIPS

## CREEKSID NOTCHED CLIPS

- Creekside notched clips are made of solid brass and feature squared edges
- For glass thickness 3/8" (10 mm) to 1/2" (12 mm)
- Requires 3/4" (19 mm) hole or notch in glass
- All WBS notched clips generally have thicker plates than most competitors
- Includes gaskets, mounting screws, and allen wrench
- Available in all colors not shown here including (PC, BN, OB, AB, PN, SN, and PB)
- Wall mount clip also available in matte black

DIMENSIONS FOR CLIPS	WIDTH	HEIGHT
Wall Mount Clip	2" (51 mm)	2" (51 mm)
135 Clip	2" (51 mm) (each leg)	2" (51 mm)
180 Clip	4" (102 mm)	2" (51 mm)
90 Clip	2" (51 mm) (each leg)	2" (51 mm)



Creekside 90 Top View



Creekside Wall Mount Clip  
Matte Black  
CP-CS-WM



Creekside 180 Notched Clip  
Brushed Nickel  
CP-CS-180



Creekside 135 Clip  
Antique Brass  
CP-CS-135



Creekside 90 Clip  
Polished Chrome  
CP-CS-90

## SEAHAVEN NOTCHED CLIPS

- Seahaven notched clips are made of solid brass and feature beveled edges
- For glass thickness 3/8" (10 mm) to 1/2" (12 mm)
- Requires 3/4" (19 mm) hole or notch in glass
- All WBS notched clips generally have thicker plates than most competitors
- Includes gaskets, mounting screws, and allen wrench
- Available in all colors not shown here including (PC, BN, OB, AB, PN, SN, PB)
- Wall mount clip also available in matte black

DIMENSIONS FOR CLIPS	WIDTH	HEIGHT
Wall Mount Clip	2" (51 mm)	2" (51 mm)
135 Clip	2" (51 mm) (each leg)	2" (51 mm)
180 Clip	4" (102 mm)	2" (51 mm)
90 Clip	2" (51 mm) (each leg)	2" (51 mm)



Seahaven Wall Mount Clip  
Antique Brass  
CP-SH-WM



Seahaven 180 Notched Clip  
Antique Brass  
CP-SH-180



Seahaven 135 Clip  
Polished Nickel  
CP-SH-135



Seahaven 90 Clip  
Brushed Nickel  
CP-SH-90

# HEAVY GLASS CLIPS

## TRANSOM CLIPS

- Transom clips are made of solid brass
- For glass thickness 3/8" (10 mm) to 1/2" (12 mm)
- Requires 3/4" (19 mm) hole or notch in glass
- Maximum 30" in width and 16" in height
- All WBS notched clips generally have thicker plates than most competitors
- Includes gaskets, mounting screws, and allen wrench
- Available in all colors not shown here including (PC, BN, OB, AB, PN, SN, PB)



Lakeport Wall Mount Clip  
Oil Rubbed Bronze  
CP-LP-WM



Lakeport 180 Clip  
Satin Nickel  
CP-LP-180



Shoreline Wall Mount Clip  
Antique Brass  
CP-SL-WM



Shoreline 180 Clip  
Polished Chrome  
CP-SL-180

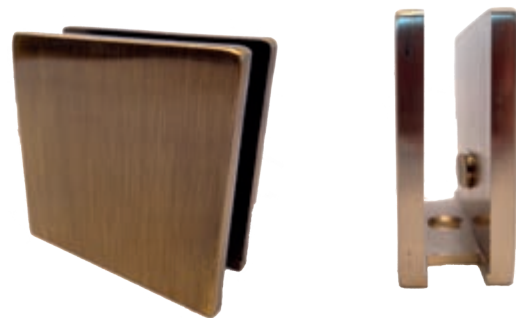
DIMENSIONS FOR CLIPS	WIDTH	HEIGHT
Wall Mount Clip	2" (51 mm)	2" (51 mm)
180 Clip	4" (102 mm)	2" (51 mm)

## NOTCHLESS COMPRESSION CLIPS

- Notchless compression clips are made of stainless steel
- Compression clips do not require cut-outs in the glass and can be placed anywhere
- Extremely durable
- Available in all colors not shown here including (PC, BN, OB, AB, PN, SN, PB)
- For 3/8" glass only



Beveled Edge Notchless Clip  
Polished Chrome  
C-CBGTW



Squared Edge Notchless Clip  
Antique Brass  
C-CGTW

## WBS PRESIDIO SINGLE MOUNT KNOBS

- For glass thickness 3/16" (4.8 mm) to 1/2" (12 mm)
- Presidio Series requires 7/8" (22 mm) hole diameter to secure through the glass
- Includes plastic washers to protect against glass-to-metal contact
- Presidio Series includes finger pull end caps for easier inside pull & is unique to WBS
- Available in 4 colors (PB, PC, BN, and OB)
- Standard on 2000 and 5000 bypass series units



Polished Brass  
KB-PR-PB



Polished Chrome  
KB-PR-PC



Oil Rubbed Bronze  
KB-PR-OB



Brushed Nickel  
KB-PR-BN



Matte Black  
KB-PR-MBL



Presidio Single Mount Knob  
Pioneered Exclusively by WBS

## ADAPTER KITS

- For use in combination only with Presidio Single Mount Knob & Presidio Single Mount Towel Bar



Polished Brass  
TB-AD-PB



Polished Chrome  
TB-AD-PC



Presidio Single Mount Towel Bar



Oil Rubbed Bronze  
TB-AD-OB



Brushed Nickel  
TB-AD-BN



Matte Black  
TB-AD-MBL



## SINGLE MOUNT KNOBS

- For glass thickness 3/16" (4.8 mm) to 1/2" (12 mm)
- Requires 1/2" (12 mm) hole diameter to secure through the glass
- Includes plastic washers to protect against glass-to-metal contact
- Available in all colors not shown here including (PC, BN, OB, AB, PN, SN, PB)
- Carmel only available in 4 colors (PB, PC, BN, and OB)



Petaluma Single Mount  
Polished Chrome  
KB-PE-SM



Calistoga Single Mount  
Polished Brass  
KB-CA-SM



Saratoga Single Mount  
Satin Nickel  
KB-SA-SM



Carmel Single Mount  
Oil Rubbed Bronze  
KB-CR-SM



Silverado Single Mount  
Antique Brass  
KB-SV-SM

## BACK-TO-BACK KNOBS

- For glass thickness 3/16" (4.8 mm) to 1/2" (12 mm)
- Requires 1/2" (12 mm) hole diameter to secure through the glass
- Includes plastic washers to protect against glass-to-metal contact
- Available in all colors not shown here including (PC, BN, OB, AB, PN, SN, PB)



Calistoga Back-to-Back  
Oil Rubbed Bronze  
KB-CA-BTB



Saratoga Back-to-Back  
Polished Brass  
KB-SA-BTB



Silverado Back-to-Back  
Brushed Nickel  
KB-SV-BTB



Petaluma Back-to-Back  
Polished Nickel  
KB-PE-BTB

# PULL HANDLES & GLASS SUPPORT BARS

## BACK-TO-BACK PULL HANDLES

- 3/4" (19 mm) diameter handles
- For glass thickness 1/4" (6 mm) to 1/2" (12 mm)
- Requires 1/2" (12 mm) hole diameter to secure through the glass
- Center-to-Center hole spacing to protect against glass-to-metal contact
- Napa series includes washers and is available in 6" or 8" in various colors not all shown here including PC, BN, OB, PB and MBL
- Sonoma Series does not include washers and is available in 6" or 8" in various colors not all show here including PC, BN, OB, PB and MBL
- WBS Ladder is available in 12" only in PC, BN, OB
- Square back-to-back handle is available in 8" only in PC, BN, OB



8" Napa Back-to-Back  
Pull Handle  
PH-NA-8BTB



6" Napa Back-to-Back  
Pull Handle  
PH-NA-6BTB



12" WBS Ladder Back-to-Back  
Pull Handle  
8" (CTC)/HL-8BTB



8" Sonoma Back-to-Back  
Pull Handle  
PH-SO-8BTB



6" Sonoma Back-to-Back  
Pull Handle  
PH-SO-6BTB



8" Square Back-to-Back  
Pull Handle  
SQ 8X8 BTB

## GLASS SUPPORT BARS

---

- Glass support bars are 3/4" (19 mm) in diameter
- Made of brass tubing with solid brass fittings
- For glass thickness 3/8" (9.5 mm) to 1/2" (12 mm)



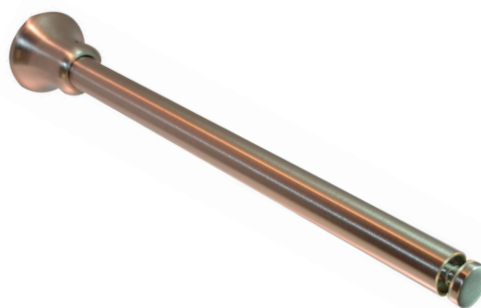
39" Sunset 135 Glass-to-Wall Support Bar  
Also available in 51" & all colors  
PC, BN, OB, AB, PN, SN, PB  
[SB-SU-39GTW135](#)



39" Sunset Glass-to-Wall Support Bar  
Also available in 51" & all colors  
PC, BN, OB, AB, PN, SN, PB  
[SB-SU-39GTW](#)



39" Sunset Glass-to-Glass Support Bar  
Also available in 51" & all colors  
PC, BN, OB, AB, PN, SN, PB  
[SB-SU-39GTG](#)



72" Sunset Thru-Glass-To-Wall Support Bar  
Available in PC and BN  
[SB-SU-72TGTW](#)

# TOWEL BARS

## TOWEL BARS

- Towel bars are 3/4" (19 mm) in diameter
- Use for glass thickness of 1/4" (6 mm) to 1/2" (12 mm)
- Requires 1/2" (12 mm) hole diameter to secure through the glass
- Presidio requires 7/8" (22.23 mm) hole diameter to secure through the glass
- Includes plastic washer to protect against glass-to-metal contact

## SINGLE MOUNT TOWEL BARS

- Presidio Series includes finger pull end caps for easier inside pull
- Presidio only available in 4 colors (PB, PC, BN, and OB)



18" Sonoma Single Mount Towel Bar  
Polished Nickel  
TB-SO-18SM



18" Napa Single Mount Towel Bar  
Polished Chrome  
TB-NA-18SM



24" Square Single Mount Towel Bar  
Brushed Nickel  
TBS-24SM



18" Presidio Single Mount Towel Bar  
Polished Chrome  
TB-PR-18SM

AVAILABLE TOWEL BAR SIZE (SONOMA SINGLE MOUNT) (NAPA SINGLE MOUNT)	CENTER-TO-CENTER (TOWEL BAR)
12"	12" (305 mm)
14"	14" (356 mm)
16"	16" (406 mm)
18"	18" (457 mm)
20"	20" (508 mm)
22"	22" (559 mm)
24"	24" (610 mm)
26"	26" (660 mm)
27"	27" (686 mm)
28"	28" (711 mm)
30"	30" (762 mm)

AVAILABLE TOWEL BAR SIZE (SQUARE SINGLE MOUNT)	CENTER-TO-CENTER (TOWEL BAR)
24"	24" (610 mm)

AVAILABLE TOWEL BAR SIZE (PRESIDIO SINGLE MOUNT)	CENTER-TO-CENTER (TOWEL BAR)
18"	18" (457 mm)
22"	22" (559 mm)
24"	24" (610 mm)
27"	27" (686 mm)
30"	30" (762 mm)

## BACK-TO-BACK TOWEL BARS

- Requires 1/2" (12 mm) hole diameter to secure through the glass Sonoma series towel bars do not include decorative metal washers
- Available in all colors not shown here including (PC, BN, OB, AB, PN, SN, PB)



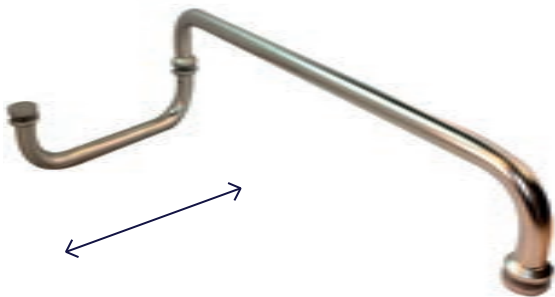
18" Sonoma Back-to-Back Towel Bar  
Polished Nickel  
TB-SO-18BTB



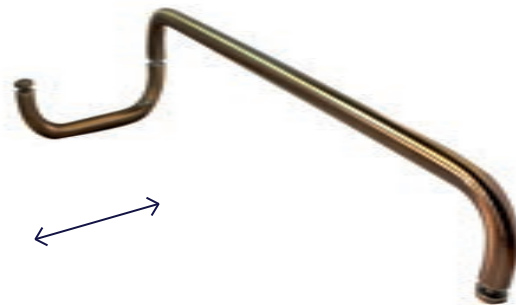
18" Napa Back-to-Back Towel Bar  
Polished Chrome  
TB-NA-18BTB

## COMBINATION PULL HANDLES WITH TOWEL BAR

- Requires 1/2" (12 mm) hole diameter to secure through the glass
- Center-to-center hole spacing is 6" (152 mm) or 8" (203 mm) for handles
- Each set consists of one pull handle (6" or 8") and one towel bar
- Sonoma Series pull handles and towel bars do not include decorative metal washers
- Available in all colors not shown here including (PC, BN, OB, AB, PN, SN, PB)



8" / 18" Napa Combination Pull Handles with Towel Bar  
Polished Nickel  
PH-NA-818COM



6" / 18" Sonoma Combination Pull Handles w/ Towel Bar  
Polished Brass  
PH-SO-618COM

AVAILABLE TOWEL BAR SIZE (FOR EITHER 6" OR 8" HANDLE)	CENTER-TO-CENTER (TOWEL BAR)
12"	12" (305 mm)
14"	14" (356 mm)
16"	16" (406 mm)
18"	18" (457 mm)
20"	20" (508 mm)
22"	22" (559 mm)
24"	24" (610 mm)
26"	26" (660 mm)
27"	27" (686 mm)
28"	28" (711 mm)
30"	30" (762 mm)

AVAILABLE TOWEL BAR SIZE (SONOMA BACK-TO-BACK) (NAPA BACK-TO-BACK)	CENTER-TO-CENTER (TOWEL BAR)
12"	12" (305 mm)
18"	18" (457 mm)
20"	20" (508 mm)
22"	22" (559 mm)
24"	24" (610 mm)

# ROBE HOOKS & WASHER KITS

## ROBE HOOKS

- Requires 1/2" (12 mm) hole diameter to secure through the glass
- For glass thickness 5/16" (8 mm) to 1/2" (12 mm)
- Includes plastic washers to protect against glass-to-metal contact
- Can mount using hanger bolt (included)
- Available in all colors not shown here including (PC, BN, OB, AB, PN, SN, PB)



Image by: VDM Glass in Sacramento, CA



Ashbury Single Mount Robe Hook  
Antique Brass  
RH-AB-SM

## WASHER KITS

- Handle washer kits are made of stainless steel
- For 3/4" (19 mm) diameter pull handles
- Back-to-back handle and towel bar washer kit contains four metal washers and four plastic washers
- Handle/Towel Bar Combo washer kits are made of brass
- Washers and end caps measure 1 1/4" (31.8 mm) in diameter
- Kit contains two metal washers, two end caps (with threaded rods), and four plastic washers



Handle Washer Kit  
WC-BTB



Handle/Towel Bar Combo Washer Kit  
WC-COM

## SLEEVES

---

- Sleeves made of solid brass
- For glass thickness 5/16" (8 mm) to 1/2" (12 mm)
- Includes gaskets
- Does not require notches or holes to be mounted
- A nylon tipped screw is tightened to secure the glass
- Adjustable Sleeve only available in five colors (PB, PC, BN, OB, and PN)
- 1/2" 135 and 90 degree sleeves are available in six colors (PB, PC, BN, OB, AB, and PN)



3/8" & 1/2" Adjustable Sleeve  
Polished Chrome  
SL-ADJ



3/8" & 1/2" 135 Degree Sleeve  
Polished Brass  
SL-12-135



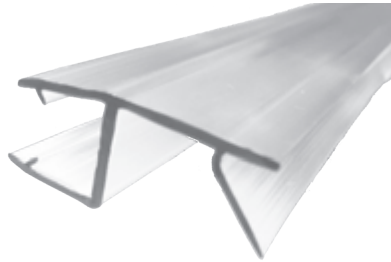
3/8" 90 Degree Sleeve  
Polished Chrome  
SL-38-90



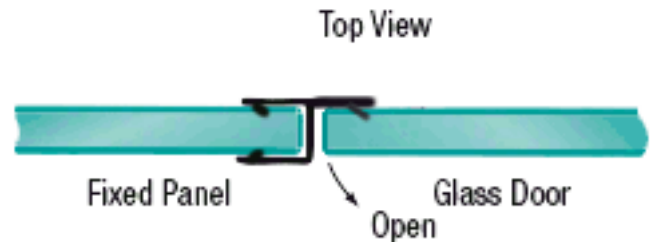
1/2" 90 Degree Sleeve  
Polished Brass  
SL-12-90

## POLYCARBONATE STOPS

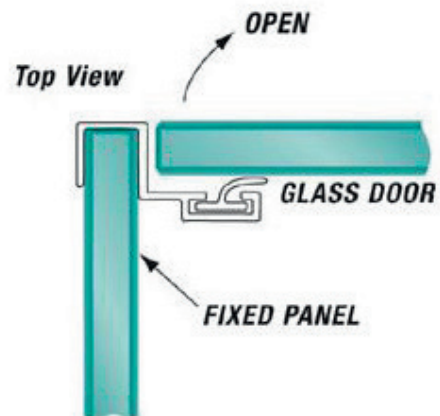
- Clear polycarbonate seals between the door and fixed panel on a 180 in-line, 90 corner, or 135 neo-angle application
- Attach to the fixed panel on the strike side
- Contains vinyl insert where door stops
- Use 5 degree positive closure hinges to maintain constant pressure against the jamb
- Stock length is 98" (2.49 m)



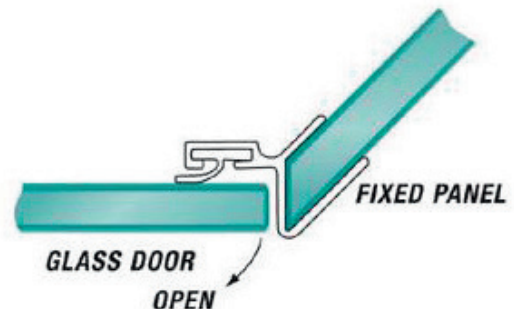
3/8" 180 Strike Stop 98"  
PC-ST-38-180SS



3/8" 90 Strike Stop 98"  
PC-ST-38-90SS



3/8" 135 Strike Stop 98"  
PC-ST-38-135SS





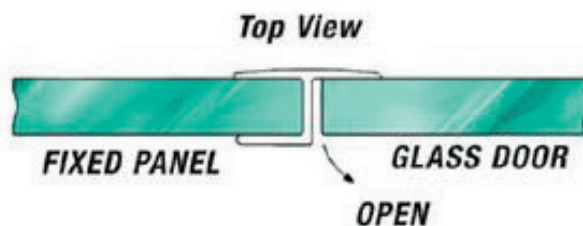
## POLYCARBONATE STOPS

### 180 RIGID STOP

- Clear polycarbonate seals between the door and fixed panel on a 180 in-line application
- Use 3/8" 180 Rigid Stop for 3/8" Glass
- Attach to the fixed panel on the strike side
- Use 5 degree positive closure hinges to maintain constant pressure against the jamb
- Stock length is 98" (2.49 m)



180 Rigid Stop 98"  
PC-ST-38-180R

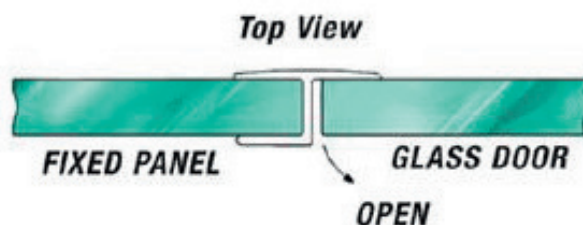


### 180 SOFT STOP

- Clear polycarbonate seals between the door and fixed panel on a 180 in-line application
- Attach to the fixed panel on the strike side
- Extended single leg is made of soft vinyl
- Use 5 degree positive closure hinges to maintain constant pressure against the jamb
- Stock length is 98" (2.49 m)

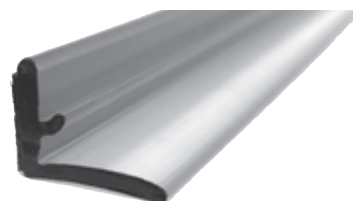


3/8" 180 Soft Stop 98"  
PC-ST-38-180S



### 6000 SERIES L-JAMB W/ ADHESIVE

- L-Jamb Polycarbonate Stop is designed for the 6000 Series and included as a component part
- Features adhesive siding to secure to the wall
- Provides a cushion for the sliding panel

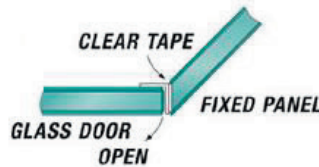


L-Jamb Polycarbonate Stop  
046268

## POLYCARBONATE SEALS

### 1/2" X 1/2" L-SEAL

- Clear polycarbonate seals between the door and fixed panel on a 135 neo-angle application
- Attach to the door on the hinge side
- Contains vinyl insert where it lies against the fixed panel
- Stock length is 98" (2.49 m)
- Use very high bond tape (VHB)



1/2" x 1/2" Square Stop 98"  
PC-ST-12X12-SS

### BULB SEAL

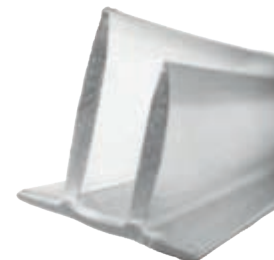
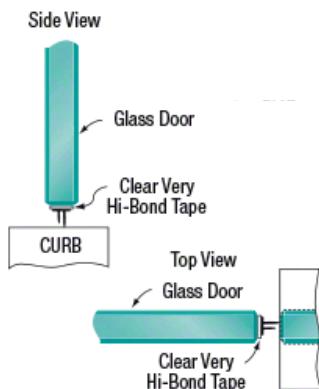
- Clear dual durometer assists in keeping water in the shower by attaching to a door
- Attach between the door and the wall on the hinge side or on the strike side
- Secure seal with clear very high bond tape
- Stock length is 98" (2.49 m)
- Use very high bond tape (VHB)



Bulb Seal 98"  
PC-SL-B

### DOUBLE FIN SEAL

- Clear dual durometer assists in keeping water in the shower by attaching to a door (either horizontal or vertical sides)
- Secure seal with clear very high bond tape
- Stock length is 98" (2.49 m)

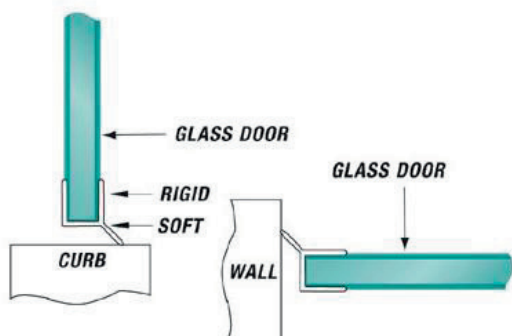


Double Fin Seal 98"  
PC-SL-DF

## POLYCARBONATE WIPES

### ANGLED SWEEP WIPES

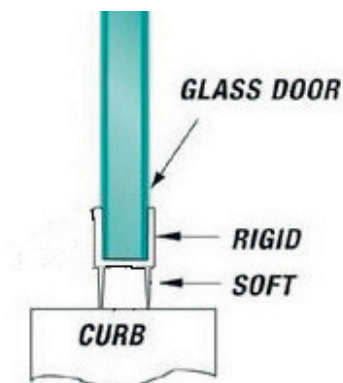
- Clear dual durometer assists in keeping water in the shower by snapping onto the bottom of the door
- May also be used between the door and the wall on the hinge side
- Stock length is 98" (2.49 m)



Angled Sweep Wipe 98"  
PC-WP-38-AS

### DOUBLE SWEEP WIPES

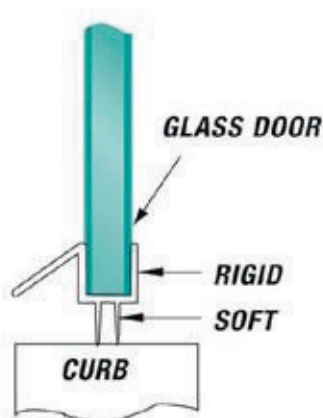
- Clear dual durometer assists in keeping water in the shower by snapping onto the bottom of the door
- Stock length is 98" (2.49 m)



3/8" Double Sweep Wipe 98"  
PC-WP-38-DS

### DOUBLE SWEEP DRIP WIPES

- Clear dual durometer assists in keeping water in the shower by snapping onto the bottom of the door
- Stock length is 98" (2.49 m)
- Available in 3/8" and 1/2"



Double Sweep Drip Wipe 98"  
PC-WP-12-DSD

# MISCELLANEOUS

## PROFESSIONAL GRADE VERY HIGH BOND TAPE

---

- Clear two-way adhesive tape
- Available in two sizes:
  - 1/4" (6 mm) x .020" (.5 mm) x 20' (6 m)
  - 1/4" (6 mm) x .040" (1 mm) x 20' (6 m)



1/4" x .020" x 20' Very High Bond Tape (VHB)  
TP-020



1/4" x .040" x 20' Very High Bond Tape (VHB)  
TP-040

## WBS GLASS CLEANER & MICROFIBER CLOTH

---

- Recommended for proper cleaning

WBS Glass Cleaner  
SSOPL



Microfiber Cloth  
MF-C

## WBS SCREWS

- All WBS screws are custom designed specifically for our shower doors & available in a variety of finishes
- Combo Drive Screws are unique to WBS
  - They either accepts phillips or square drive
  - Made of stainless steel and will not rust
- Wall mount plate screws are made of stainless steel
  - #10 x 2/12" square head



ALL WBS SCREWS ARE CUSTOM DESIGNED SPECIFICALLY FOR OUR SHOWER DOORS

## DRILL BITS

- Every TE/SE unit contains
  - #32 High Speed Steel Drill Bit
  - Apex Bit
  - Porcelain Bit
- Every Pivot Door unit contains
  - #32 High Speed Steel Drill Bit
  - Apex Bit
- Every Heavy unit contains
  - 2 Porcelain Drill Bits



#32 High Speed Steel  
Drill Bit  
DB-32-HSS



#1 & #2 3/8" Square Drive  
Apex Bit  
AB-12-SD3



3/16" & 1/4"  
Porcelain Drill Bit  
PB-732 / PB-14

# WARDROBE DOORS

## WBS WARDROBE DOORS FEATURES

Wardrobe & Bath Specialties Wardrobe Doors are made of the highest quality materials. Our innovative designs are both stylish and manufactured to glide with ease. We use the thickest aluminum extrusions available in the industry, precision Delrin® rollers, mohair interior tracks, and a variety of finish options within each series.

## WARDROBE DOORS AT-A-GLANCE

### SMOOTH & QUIET GLIDING

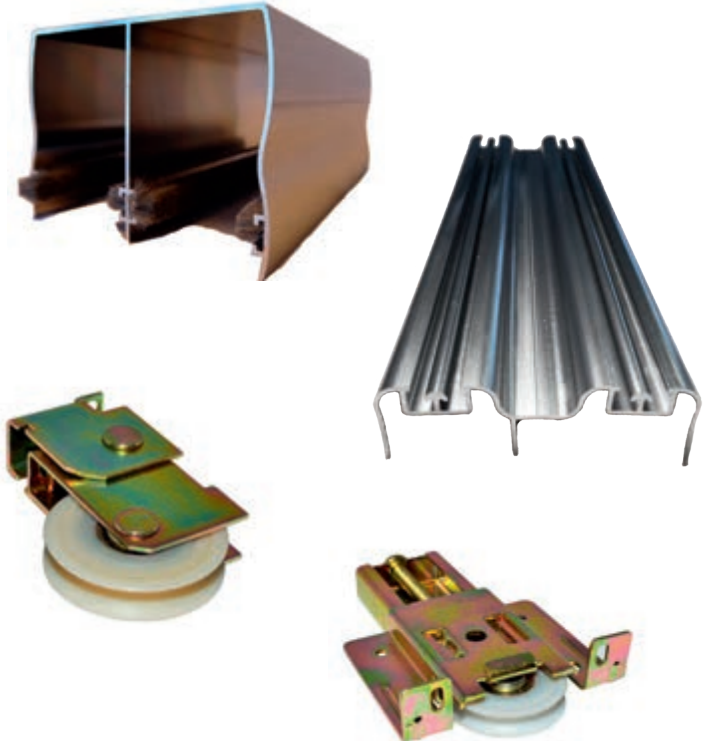
- Mohair Guide System
- Precision Rollers

### DURABILITY

- Thickest Aluminum Extrusions
- Guide Rails inserted into the frame
- Double and Triple Tracks
- Delrin® Precision Ball-Bearing Rollers

### STYLISH DESIGNS

- Six Style Options
- Multiple Finishes
- Protected Edges
- Framed/Frameless Look
- Beveled/Non-Beveled
- Extensive List of Sizes



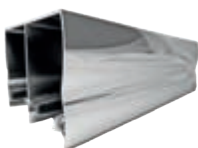
## ADDITIONAL WARDROBE FINISHES



Mirrored Glass



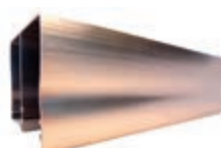
White Vinyl Board



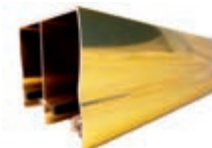
Polished Chrome



Oil Rubbed Bronze



Brushed Nickel



Polished Brass



Satin Gold



White

## #100 SERIES ALUMINUM BI-PASS MIRROR WARDROBE DOORS



### FEATURES & BENEFITS

- 5/32" thick and 1/8" thick mirror
- 1 3/8" thick frame stiles
- Stiles made using a hollow die for tighter tolerances & a cleaner look
- Interior top track mohair guide system
- CAT II vinyl back mirror
- Triple track available upon request
- Available in two or three panel units
- Height adjustments
  - 80 1/2" Units: Minimum Height = 80"  
Maximum Height = 81 1/2"
  - 96" Units: Minimum Height = 95 1/8"  
Maximum Height = 96 5/8"

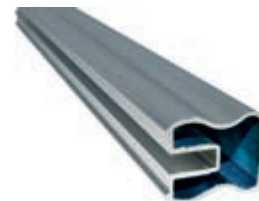
### GLASS TEXTURES



Mirrored Glass

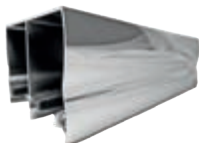


#100 Delrin® Precision Ball Bearing Roller



#100 Series Stile

### AVAILABLE COLORS



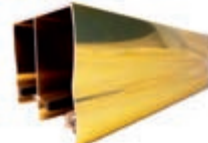
Polished Chrome



Oil Rubbed Bronze



Brushed Nickel



Polished Brass



Satin Gold



White

### WIDTH & HEIGHT OPTIONS

Net Finished Opening Width x Height	2 Panel Units			Net Finished Opening Width x Height	3 Panel Units		
	Satin Gold White	Chrome Polished Brass	Oil Rubbed Bronze Brushed Nickel		Satin Gold White	Chrome Polished Brass	Oil Rubbed Bronze Brushed Nickel
	List Price	List Price	List Price		List Price	List Price	List Price
48" x 80 1/2"	\$366	\$466	\$662	108" x 80 1/2"	\$799	\$1,005	\$1,428
60" x 80 1/2"	\$428	\$542	\$770	120" x 80 1/2"	\$955	\$1,089	\$1,546
72" x 80 1/2"	\$484	\$608	\$863	132" x 80 1/2"	\$1,032	\$1,168	\$1,659
84" x 80 1/2"	\$570	\$688	\$977	144" x 80 1/2"	\$1,054	\$1,245	\$1,768
96" x 80 1/2"	\$630	\$760	\$1,079	108" x 96"	\$913	\$1,144	\$1,624
48" x 96"	\$426	\$528	\$750	120" x 96"	\$1,087	\$1,232	\$1,749
60" x 96"	\$490	\$612	\$869	132" x 96"	\$1,177	\$1,320	\$1,874
72" x 96"	\$548	\$692	\$983	144" x 96"	\$1,188	\$1,412	\$2,006
84" x 96"	\$652	\$778	\$1,105				
96" x 96"	\$720	\$858	\$1,218				

Mirror thickness ranges from 1/8" thick for panels 36" wide and under, and 5/32" thick for panels over 36" wide.

For custom units use next largest size and add \$15.00 net per panel.

# WARDROBE DOORS

## #200 SERIES ALUMINUM BI-PASS MIRROR WARDROBE DOORS



### FEATURES & BENEFITS

- 5/32" thick and 1/8" thick mirror
- 3/4" thick frame stiles
- Interior top track mohair guide system
- Triple track available upon request
- Available in two or three panel units
- CAT II vinyl back mirror
- Height adjustments
  - 80 1/2" Units: Minimum Height = 80"  
Maximum Height = 81 1/2"
  - 96" Units: Minimum Height = 95 1/8"  
Maximum Height = 96 5/8"

### GLASS TEXTURES



Mirrored Glass

### AVAILABLE COLORS



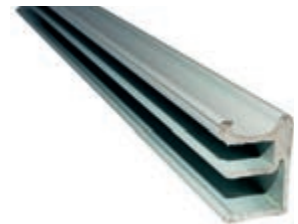
Brushed Nickel



White



#200 Delrin Precision Ball Bearing Roller



#200 Series Stile

### WIDTH & HEIGHT OPTIONS

#### Net Finished Opening

Width x Height	White List Price	Brushed Nickel List Price
<b>2 Panel Units</b>		
48" x 80 1/2"	\$366	\$662
60" x 80 1/2"	\$428	\$770
72" x 80 1/2"	\$484	\$863
84" x 80 1/2"	\$570	\$977
96" x 80 1/2"	\$630	\$1,079
48" x 96"	\$426	\$750
60" x 96"	\$490	\$869
72" x 96"	\$548	\$983
84" x 96"	\$652	\$1,105
96" x 96"	\$720	\$1,218

#### Net Finished Opening

Width x Height	White List Price	Brushed Nickel List Price
<b>3 Panel Units</b>		
108" x 80 1/2"	\$799	\$1,428
120" x 80 1/2"	\$955	\$1,546
132" x 80 1/2"	\$1,032	\$1,659
144" x 80 1/2"	\$1,054	\$1,768
108" x 96"	\$913	\$1,624
120" x 96"	\$1,087	\$1,749
132" x 96"	\$1,177	\$1,874
144" x 96"	\$1,188	\$2,006

Mirror thickness ranges from 1/8" thick for panels 36" wide and under, and 5/32" thick for panels over 36" wide.

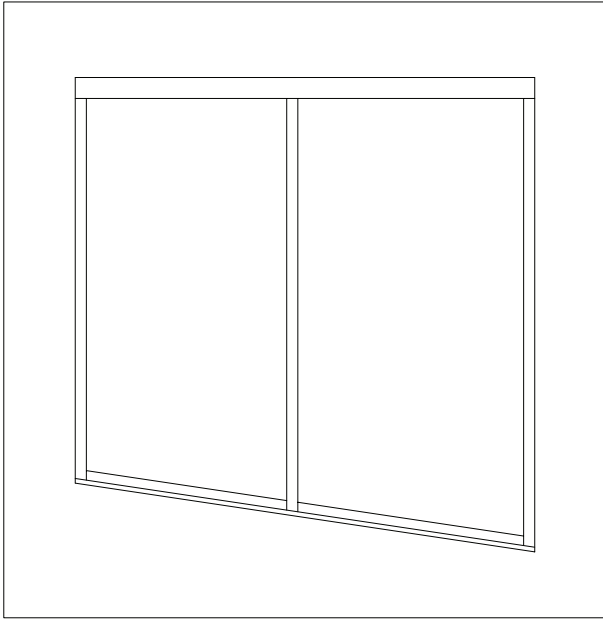
For custom units use next largest size and add \$15.00 net per panel.



## #300 SERIES ALUMINUM BI-PASS VINYL WARDROBE DOORS

### FEATURES & BENEFITS

- 1/8" thick white vinyl board
- 3/4" thick frame stiles
- Interior top track mohair guide system
- Triple track available upon request
- Available in two or three panel units
- Constructed with aluminum extrusions unique to WBS
- Height adjustments
  - 80 1/2" Units: Minimum Height = 80"  
Maximum Height = 81 1/2"
  - 96" Units: Minimum Height = 95 1/8"  
Maximum Height = 96 5/8"



### GLASS TEXTURES



White Vinyl Board

### AVAILABLE COLORS



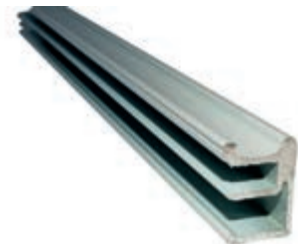
Brushed Nickel



White



#300 Delrin Precision Ball Bearing Roller



#300 Series Stile

### WIDTH & HEIGHT OPTIONS

<u>Net Finished Opening</u>			<u>Net Finished Opening</u>				
<u>Width x Height</u>		<u>White</u>	<u>Brushed Nickel</u>	<u>Width x Height</u>		<u>White</u>	<u>Brushed Nickel</u>
<u>2 Panel Units</u>		<u>List Price</u>	<u>List Price</u>	<u>3 Panel Units</u>		<u>List Price</u>	<u>List Price</u>
48" x	80 1/2"	\$366	\$662	108" x	80 1/2"	\$799	\$1,428
60" x	80 1/2"	\$428	\$770	120" x	80 1/2"	\$955	\$1,546
72" x	80 1/2"	\$484	\$863	132" x	80 1/2"	\$1,032	\$1,659
84" x	80 1/2"	\$570	\$977	144" x	80 1/2"	\$1,054	\$1,768
96" x	80 1/2"	\$630	\$1,079	108" x	96"	\$913	\$1,624
48" x	96"	\$426	\$750	120" x	96"	\$1,087	\$1,749
60" x	96"	\$490	\$869	132" x	96"	\$1,177	\$1,874
72" x	96"	\$548	\$983	144" x	96"	\$1,188	\$2,006
84" x	96"	\$652	\$1,105				
96" x	96"	\$720	\$1,218				

For custom units use next largest size and add \$15.00 net per panel.

# WARDROBE DOORS

## #400 SERIES ALUMINUM BI-PASS EURO STYLE MIRROR WARDROBE DOORS



### FEATURES & BENEFITS

- This unit is built to size with no custom charge
- 5/32" thick mirror
- 1 3/8" thick frame stiles
- Stiles made using a hollow die for tighter tolerances & a cleaner look
- Interior top track mohair guide system and tandem rollers
- Triple track available upon request

### GLASS TEXTURES



Mirrored Glass

### AVAILABLE COLORS



Brushed Nickel



White



#400 Delrin Precision Ball Bearing Roller



#400 Series Stile

### WIDTH & HEIGHT OPTIONS

#### Net Finished Opening

Width x Height		White	Brushed Nickel
2 Panel Units		List Price	List Price
48" x	80 1/2"	\$766	\$1,287
60" x	80 1/2"	\$876	\$1,460
72" x	80 1/2"	\$986	\$1,633
84" x	80 1/2"	\$1,096	\$1,809
96" x	80 1/2"	\$1,206	\$1,982
48" x	96"	\$858	\$1,440
60" x	96"	\$980	\$1,630
72" x	96"	\$1,154	\$1,897
84" x	96"	\$1,222	\$2,011
96" x	96"	\$1,428	\$2,320

#### Net Finished Opening

Width x Height		White	Brushed Nickel
3 Panel Units		List Price	List Price
108" x	80 1/2"	\$1,480	\$2,451
120" x	80 1/2"	\$1,620	\$2,667
132" x	80 1/2"	\$1,760	\$2,885
144" x	80 1/2"	\$1,810	\$2,973
108" x	96"	\$1,732	\$2,846
120" x	96"	\$1,808	\$2,973
132" x	96"	\$2,090	\$3,391
144" x	96"	\$2,140	\$3,482

Unit must be ordered with 4 measurements: Height = Measure opening at the left and right facing unit.

Width = Measure opening at the top and bottom facing unit.

## #500 SERIES FINELINE BI-FOLD MIRROR WARDROBE DOORS

### FEATURES & BENEFITS

- This unit is built to size with no custom charge and has a 3/8" wrap around frame and 1/8" mirror
- All aluminum extrusions
- Available in either two panel or four panel configurations
- Also available with no bottom track utilizing a jamb bracket



### GLASS TEXTURES



Mirrored Glass

### AVAILABLE COLORS



Brushed Nickel



White



Jamb Bracket



#500 Series Stile

### WIDTH & HEIGHT OPTIONS

#### Net Finished Opening

Width x Height	White List Price	Brushed Nickel List Price
<b>2 Panel Units</b>		
24" x 80 1/2"	\$442	\$747
30" x 80 1/2"	\$475	\$800
36" x 80 1/2"	\$513	\$856
24" x 96"	\$484	\$828
30" x 96"	\$524	\$887
36" x 96"	\$561	\$950

#### Net Finished Opening

Width x Height	White List Price	Brushed Nickel List Price
<b>4 Panel Units</b>		
48" x 80 1/2"	\$1,480	\$2,451
60" x 80 1/2"	\$1,620	\$2,667
72" x 80 1/2"	\$1,760	\$2,885
48" x 96"	\$1,810	\$2,973
60" x 96"	\$1,732	\$2,846
72" x 96"	\$1,808	\$2,973

Unit must be ordered with 4 measurements: Height = Measure opening at the left and right facing unit.  
Width = Measure opening at the top and bottom facing unit.

# WARDROBE DOORS

## #800 SERIES FRAMELESS BEVELED BI-PASS MIRROR WARDROBE DOORS



### FEATURES & BENEFITS

- 5/32" thick mirror
- Interior top track mohair guide system
- Frameless appearance
- Protective edge on vertical sides
- 3/4" bevel on vertical sides
- Triple track available upon request
- Available in two or three panel units
- Constructed with aluminum extrusions unique to WBS
- For custom units use next largest size and add \$15.00 net per panel
- This unit is not available with a custom width, only a custom height
- Height adjustments
  - 80 1/2" Units: Minimum Height = 80"  
Maximum Height = 81 1/2"
  - 96" Units: Minimum Height = 95 1/8"  
Maximum Height = 96 5/8"

### WIDTH & HEIGHT OPTIONS

#### Net Finished Opening

Width x Height	Satin Gold		Chrome	
	White	Polished Brass	OB/BN	
2 Panel Units	List Price	List Price	List Price	
48" x 80 1/2"	\$540	\$625	\$850	
52" x 80 1/2"	\$610	\$695	\$945	
56" x 80 1/2"	\$610	\$695	\$945	
60" x 80 1/2"	\$610	\$695	\$945	
64" x 80 1/2"	\$685	\$765	\$1,040	
68" x 80 1/2"	\$685	\$765	\$1,040	
72" x 80 1/2"	\$685	\$765	\$1,040	
76" x 80 1/2"	\$750	\$835	\$1,136	
80" x 80 1/2"	\$750	\$835	\$1,136	
84" x 80 1/2"	\$750	\$835	\$1,136	
88" x 80 1/2"	\$800	\$905	\$1,231	
92" x 80 1/2"	\$800	\$905	\$1,231	
96" x 80 1/2"	\$800	\$905	\$1,231	

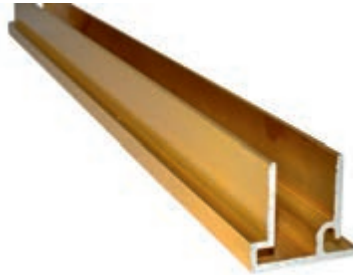
#### Net Finished Opening

Width x Height	Satin Gold		Chrome	
	White	Polished Brass	OB/BN	
2 Panel Units	List Price	List Price	List Price	
48" x 96"	\$610	\$720	\$979	
52" x 96"	\$670	\$800	\$1,088	
56" x 96"	\$670	\$800	\$1,088	
60" x 96"	\$670	\$800	\$1,088	
64" x 96"	\$730	\$880	\$1,197	
68" x 96"	\$730	\$880	\$1,197	
72" x 96"	\$730	\$880	\$1,197	
76" x 96"	\$830	\$965	\$1,312	
80" x 96"	\$830	\$965	\$1,312	
84" x 96"	\$830	\$965	\$1,312	
88" x 96"	\$900	\$1,040	\$1,414	
92" x 96"	\$900	\$1,040	\$1,414	
96" x 96"	\$900	\$1,040	\$1,414	

## #800 SERIES FRAMELESS BEVELED BI-PASS MIRROR WARDROBE DOORS CONTINUED



#800 Delrin Precision Ball Bearing Roller



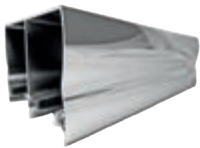
#800 Series Stile

### GLASS TEXTURES



Mirrored Glass

### AVAILABLE COLORS



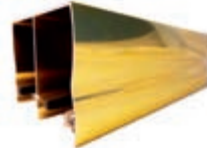
Polished Chrome



Oil Rubbed Bronze



Brushed Nickel



Polished Brass



Satin Gold



White

#### Net Finished Opening

<u>Width x Height</u>	<u>Satin Gold</u>		<u>Chrome</u>	
	<u>White</u>	<u>Polished Brass</u>	<u>OB/BN</u>	
<u>3 Panel Units</u>	<u>List Price</u>	<u>List Price</u>	<u>List Price</u>	
102" x 80 1/2"	\$1,122	\$1,282	\$1,742	
108" x 80 1/2"	\$1,122	\$1,282	\$1,742	
114" x 80 1/2"	\$1,238	\$1,375	\$1,870	
120" x 80 1/2"	\$1,238	\$1,375	\$1,870	
126" x 80 1/2"	\$1,320	\$1,469	\$1,998	
132" x 80 1/2"	\$1,320	\$1,469	\$1,998	
138" x 80 1/2"	\$1,430	\$1,513	\$2,057	
144" x 80 1/2"	\$1,430	\$1,513	\$2,057	

#### Net Finished Opening

<u>Width x Height</u>	<u>Satin Gold</u>		<u>Chrome</u>	
	<u>White</u>	<u>Polished Brass</u>	<u>OB/BN</u>	
<u>3 Panel Units</u>	<u>List Price</u>	<u>List Price</u>	<u>List Price</u>	
102" x 96"	\$1,199	\$1,496	\$2,035	
108" x 96"	\$1,199	\$1,496	\$2,035	
114" x 96"	\$1,353	\$1,584	\$2,154	
120" x 96"	\$1,353	\$1,584	\$2,154	
126" x 96"	\$1,447	\$1,672	\$2,274	
132" x 96"	\$1,447	\$1,672	\$2,274	
138" x 96"	\$1,502	\$1,727	\$2,349	
144" x 96"	\$1,502	\$1,727	\$2,349	

For custom units use next largest size and add \$15.00 net per panel. This unit is not available with a custom width, only a custom height.

## PRODUCT INDEX BY CATEGORY

---

### ABOUT US

• ABOUT US .....	2, 3
• QUALITY CONTROL .....	4, 5
• GLASS CARE & MAINTENANCE .....	6, 7
• CERTIFIED SIKA DISTRIBUTOR & PRODUCTS .....	8, 9
• POLICY & TERMS .....	10, 11
• GLASS TEXTURES & FINISHES .....	12, 13

### TUB & SHOWER ENCLOSURES

• TUB & SHOWER ENCLOSURES FEATURES .....	14, 15
• TE 1000 FRAMELESS TUB ENCLOSURES .....	16
• TE 1000 FRAMELESS TUB ENCLOSURES WITH PANELS .....	17
• SE 1000 FRAMELESS SHOWER ENCLOSURES .....	18
• SE 1000 FRAMELESS SHOWER ENCLOSURES WITH PANELS .....	19
• TE 1100 LIGHT FRAMED TUB ENCLOSURE .....	20
• SE 1100 LIGHT FRAMED SHOWER ENCLOSURE .....	21
• TE 1200 LIGHT FRAMED TUB ENCLOSURE .....	22
• SE 1200 LIGHT FRAMED SHOWER ENCLOSURE .....	23
• TE 2000 FRAMELESS EURO TUB ENCLOSURES .....	24
• TE 2000 FRAMELESS EURO TUB ENCLOSURES WITH PANELS .....	25
• SE 2000 FRAMELESS EURO SHOWER ENCLOSURES .....	26
• SE 2000 FRAMELESS EURO SHOWER ENCLOSURES WITH PANELS .....	27
• TE 3000 FRAMED TUB ENCLOSURES .....	28
• TE 3000 FRAMED TUB ENCLOSURES WITH PANELS .....	29
• SE 3000 FRAMED SHOWER ENCLOSURES .....	30
• SE 3000 FRAMED SHOWER ENCLOSURES WITH PANELS .....	31
• TE 4000 FRAMELESS LIGHT EURO TUB ENCLOSURES .....	32
• TE 4000 FRAMELESS LIGHT EURO TUB ENCLOSURES WITH PANELS .....	33
• SE 4000 FRAMELESS LIGHT EURO SHOWER ENCLOSURES .....	34
• SE 4000 FRAMELESS LIGHT EURO SHOWER ENCLOSURES WITH PANELS .....	35
• TE 5000 FRAMELESS HEAVY TUB ENCLOSURES .....	36
• TE 5000 FRAMELESS HEAVY TUB ENCLOSURES WITH PANELS .....	37
• SE 5000 FRAMELESS HEAVY SHOWER ENCLOSURES .....	38
• SE 5000 FRAMELESS HEAVY SHOWER ENCLOSURES WITH PANELS .....	39

### PIVOT & SWING DOOR SHOWERS

• P 1500 CONTINUOUS HINGE FRAMELESS SWING DOOR ONLY .....	40
• P 2000 EURO STYLE FRAMELESS SWING DOOR ONLY .....	41
• P 2500 EURO STYLE FRAMELESS SWING DOOR ONLY .....	42
• P 3000 CONTINUOUS HINGE FRAMED SWING DOOR ONLY .....	43
• PIVOT & SWING DOOR COMPONENTS - P 45 .....	44
• PIVOT & SWING DOOR COMPONENTS - P 90 .....	45
• PIVOT & SWING DOOR COMPONENTS - P 90 I .....	46
• PIVOT & SWING DOOR COMPONENTS - P 135 .....	47
• PIVOT & SWING DOOR COMPONENTS - P 180 .....	48, 49

# PRODUCT INDEX BY CATEGORY CONTINUED

## HEAVY GLASS UNITS & HARDWARE

- HEAVY GLASS FEATURES ..... 50, 51
- HEAVY GLASS CUSTOM CONFIGURATIONS ..... 52, 53
- 6000 SERIES, HEAVY GLASS SLIDING DOOR ..... 54, 55
- 7000 SERIES, HEAVY GLASS SLIDING DOOR ..... 56, 57
- STANDARD HINGES ..... 58, 59
- HEAVY HINGES ..... 60 - 63
- WBS EZ HINGE, BAYVIEW PIVOT HINGE ..... 64
- HEADER KIT, BRACKETS ..... 65
- U-CHANNELS, J-MOLDS, L-BAR ..... 66
- VINYL, SETTING BLOCKS ..... 67
- NOTCHED CLIPS ..... 68, 69
- TRANSOM CLIPS ..... 70
- NOTCHLESS COMPRESSION CLIPS ..... 71
- SINGLE MOUNT KNOBS, ADAPTER KITS ..... 72
- SINGLE MOUNT KNOBS, BACK-TO-BACK KNOBS ..... 73
- BACK-TO-BACK PULL HANDLES ..... 74
- GLASS SUPPORT BARS ..... 75
- SINGLE MOUNT TOWEL BARS ..... 76
- BACK-TO-BACK TOWEL BARS, COMBINATION PULL HANDLES WITH TOWEL BAR ..... 77
- ROBE HOOKS, WASHER KITS ..... 78
- SLEEVES ..... 79
- POLYCARBONATES ..... 80 - 83
- STOPS ..... 80, 81
  - SEALS ..... 82
  - WIPES ..... 83
- MISCELLANEOUS ..... 84, 85
  - VERY HIGH BOND TAPE (VHB) ..... 84
  - WBS GLASS CLEANER, MICROFIBER CLOTH ..... 84
  - SCREWS, DRILL BITS ..... 85

## WARDROBE DOORS

- WARDROBE DOORS FEATURES ..... 86
- # 100 SERIES ALUMINUM BI-PASS MIRROR WARDROBE DOORS ..... 87
- # 200 SERIES ALUMINUM BI-PASS MIRROR WARDROBE DOORS ..... 88
- # 300 SERIES ALUMINUM BI-PASS VINYL WARDROBE DOORS ..... 89
- # 400 SERIES ALUMINUM BI-PASS EURO STYLE MIRROR WARDROBE DOORS ..... 90
- # 500 SERIES FINELINE BI-FOLD MIRROR WARDROBE DOORS ..... 91
- # 800 FRAMELESS BEVELED BI-PASS MIRROR WARDROBE DOORS ..... 92, 93



# A TO Z INDEX

BRACKETS .....	65	J-MOLDS: 3/8" J-MOLD, 5/8" J-MOLD .....	66
• ADJUSTABLE HEADER .....	65	KNOBES .....	72, 73
• 90 CORNER .....	65	• BACK-TO-BACK KNOBS .....	73
• 135 CORNER .....	65	• CALISTOGA BACK-TO-BACK KNOBS .....	73
• WALL MOUNT .....	65	• SARATOGA BACK-TO-BACK KNOB .....	73
CLIPS .....	68 - 71	• SILVERADO BACK-TO-BACK KNOB .....	73
• NOTCHED CLIPS .....	68, 69	• PETALUMA BACK-TO-BACK KNOB .....	73
• CREEKSIDE 90, 135, 180 & WALL MOUNT .....	68	• SINGLE MOUNT KNOBS .....	72, 73
• SEAHAVEN 90, 135, 180 & WALL MOUNT .....	69	• CALISTOGA SINGLE MOUNT KNOB .....	73
• NOTCHLESS CLIPS (COMPRESSION CLIPS) .....	71	• CARMEL SINGLE MOUNT KNOB .....	73
• BEVELED & SQUARED EDGE .....	71	• PETALUMA SINGLE MOUNT KNOB .....	73
• TRANSOM CLIPS .....	70	• PRESIDIO SINGLE MOUNT KNOBS .....	72
• LAKEPORT 180, WALL MOUNT .....	70	• PRESIDIO SINGLE MOUNT ADAPTER KITS .....	72
• SHORELINE 180, WALL MOUNT .....	70	• SARATOGA SINGLE MOUNT KNOB .....	73
DRILL BITS .....	85	• SILVERADO SINGLE MOUNT KNOB .....	73
GLASS SUPPPORT BARS .....	75	L-BAR .....	66
• SUNSET GLASS-TO-GLASS SUPPORT BAR .....	75	MICROFIBER CLOTH .....	84
• SUNSET GLASS-TO-WALL SUPPORT BAR .....	75	PIVOT DOORS & COMPONENTS .....	40 - 49
• SUNSET THRU-GLASS-TO-WALL SUPPORT BAR .....	75	• PIVOT 1500 CONTINUOUS HINGE FRAMELESS SWING DOORS .....	40
• SUNSET 135 GLASS-TO-WALL SUPPORT BAR .....	75	• PIVOT 2000 EURO STYLE FRAMELESS SWING DOORS .....	41
HANDLES .....	74	• PIVOT 2500 EURO STYLE FRAMELESS SWING DOORS .....	42
• BACK-TO-BACK PULL HANDLES .....	74	• PIVOT 3000 CONTINUOUS HINGE FRAMED SWING DOORS .....	43
• NAPA BACK-TO-BACK PULL HANDLES (6" & 8") .....	74	• PIVOT & SWING DOOR COMPONENTS - P 45 .....	44
• SONOMA BACK-TO-BACK PULL HANDLES (6" & 8") .....	74	• PIVOT & SWING DOOR COMPONENTS - P 90 .....	45
• SQUARE BACK-TO-BACK PULL HANDLES (8") .....	74	• PIVOT & SWING DOOR COMPONENTS - P 90 I .....	46
• WBS LADDER BACK-TO-BACK PULL HANDLES (6" & 8") .....	74	• PIVOT & SWING DOOR COMPONENTS - P 135 .....	47
• COMBINATION PULL HANDLES WITH TOWEL BAR .....	77	• PIVOT & SWING DOOR COMPONENTS - P 180 .....	48, 49
• NAPA COMBINATION PULL HANDLES WITH TOWEL BAR .....	77	PIVOT HINGES .....	64
• SONOMA COMBINATION PULL HANDLES W/ TOWEL BAR .....	77	• BAYVIEW PIVOT HINGE .....	64
HEADER KITS .....	65	• WBS EZ HINGE .....	64
• EZ HEADER KIT WITH INSERT .....	65	POLYCARBONATES .....	80 - 83
HEAVY GLASS UNITS .....	50 - 57	• POLYCARBONATE SEALS .....	82
• HEAVY GLASS FEATURES .....	50, 51	• POLYCARBONATE STOPS .....	80, 81
• HEAVY GLASS CONFIGURATIONS .....	52, 53	• POLYCARBONATE WIPES .....	83
• 6000 SERIES .....	54, 55	TOWEL BARS .....	76, 77
• 7000 SERIES .....	56, 57	• BACK-TO-BACK TOWEL BARS .....	77
HINGES .....	58 - 63	• NAPA BACK-TO-BACK TOWEL BAR .....	77
• HEAVY HINGES .....	60 - 63	• SONOMA BACK-TO-BACK TOWEL BAR .....	77
• ATLANTIC HEAVY HINGE W/ ADJUSTABLE SHORT PLATE .....	63	• SINGLE MOUNT TOWEL BARS .....	76
• ATLANTIC HEAVY HINGE W/ FULL PLATE .....	61	• NAPA SINGLE MOUNT TOWEL BAR .....	76
• ATLANTIC HEAVY HINGE W/ OFFSET PLATE .....	61	• PRESIDIO SINGLE MOUNT TOWEL BAR .....	76
• ATLANTIC HEAVY HINGE W/ SHORT PLATE .....	61	• SONOMA SINGLE MOUNT TOWEL BAR .....	76
• ATLANTIC HEAVY 135 HINGE .....	63	• SQUARE SINGLE MOUNT TOWEL BAR .....	76
• ATLANTIC HEAVY 180 HINGE .....	63	• COMBINATION PULL HANDLES WITH TOWEL BAR .....	77
• PACIFIC HEAVY HINGE W/ ADJUSTABLE SHORT PLATE .....	63	• NAPA COMBINATION PULL HANDLE W/ TOWEL BAR .....	77
• PACIFIC HEAVY HINGE W/ FULL PLATE .....	61	• SONOMA COMBINATION PULL HANDLE W/ TOWEL BAR .....	77
• PACIFIC HEAVY HINGE W/ OFFSET PLATE .....	61	ROBE HOOKS .....	78
• PACIFIC HEAVY HINGE W/ SHORT PLATE .....	61	• ASHBURY SINGLE MOUNT ROBE HOOK .....	78
• PACIFIC HEAVY 135 HINGE .....	63	SCREWS .....	85
• PACIFIC HEAVY 180 HINGE .....	63	• COMBO DRIVE, WALL MOUNT, ALL OTHER WBS SCREWS .....	85
• STANDARD HINGES .....	58, 59	SETTING BLOCKS .....	67
• LAGUNA STANDARD HINGE W/ FULL PLATE .....	59		
• LAGUNA STANDARD HINGE W/ OFFSET PLATE .....	59		
• LAGUNA STANDARD HINGE W/ SHORT PLATE .....	59		
• MARINA STANDARD HINGE W/ FULL PLATE .....	59		
• MARINA STANDARD HINGE W/ OFFSET PLATE .....	59		
• MARINA STANDARD HINGE W/ SHORT PLATE .....	59		



# A TO Z INDEX CONTINUED

SHOWER ENCLOSURES .....	19, 21, 22, 23, 26, 27, 30, 31, 34, 35, 38, 39
• SE 1000 FRAMELESS SHOWER ENCLOSURES .....	18
• SE 1000 FRAMELESS SHOWER ENCLOSURES WITH PANELS .....	19
• SE 1100 LIGHT FRAMED TUB ENCLOSURES .....	21
• SE 1200 LIGHT FRAMED TUB ENCLOSURES .....	23
• SE 2000 FRAMELESS EURO SHOWER ENCLOSURES .....	26
• SE 2000 FRAMELESS EURO SHOWER ENCLOSURES WITH PANELS .....	27
• SE 3000 FRAMED SHOWER ENCLOSURES .....	30
• SE 3000 FRAMED SHOWER ENCLOSURES WITH PANELS .....	31
• SE 4000 FRAMELESS LIGHT EURO SHOWER ENCLOSURES .....	34
• SE 4000 FRAMELESS LIGHT EURO SHOWER ENCLOSURES WITH PANELS .....	35
• SE 5000 FRAMELESS HEAVY SHOWER ENCLOSURES .....	38
• SE 5000 FRAMELESS HEAVY SHOWER ENCLOSURES WITH PANELS .....	39
SLEEVES: ADJUSTABLE, 90° 3/8" & 1/2", 135 .....	79
TUB ENCLOSURES .....	16, 17, 18, 20, 24, 25, 28, 29, 32, 33, 36, 37
• TE 1000 FRAMELESS TUB ENCLOSURES .....	16
• TE 1000 FRAMELESS TUB ENCLOSURES WITH PANELS .....	17
• TE 1100 LIGHT FRAMED TUB ENCLOSURES .....	20
• TE 1200 LIGHT FRAMED TUB ENCLOSURES .....	22
• TE 2000 FRAMELESS EURO TUB ENCLOSURES .....	24
• TE 2000 FRAMELESS EURO TUB ENCLOSURES WITH PANELS .....	25
• TE 3000 FRAMED TUB ENCLOSURES .....	28
• TE 3000 FRAMED TUB ENCLOSURES WITH PANELS .....	29
• TE 4000 FRAMELESS LIGHT EURO TUB ENCLOSURES .....	32
• TE 4000 FRAMELESS LIGHT EURO TUB ENCLOSURES WITH PANELS .....	33
• TE 5000 FRAMELESS HEAVY TUB ENCLOSURES .....	36
• TE 5000 FRAMELESS HEAVY TUB ENCLOSURES WITH PANELS .....	37
• U-CHANNELS: 3/8" HIGH, 3/8" MEDIUM, 3/8" LOW .....	66
WARDROBE DOORS .....	86 - 93
• # 100 SERIES ALUMINUM BI-PASS MIRROR WARDROBE DOORS .....	87
• # 200 SERIES ALUMINUM BI-PASS MIRROR WARDROBE DOORS .....	88
• # 300 SERIES ALUMINUM BI-PASS VINYL WARDROBE DOORS .....	89
• # 400 SERIES ALUMINUM BI-PASS EURO STYLE MIRROR WARDROBE DOORS .....	90
• # 500 SERIES FINELINE BI-FOLD MIRROR WARDROBE DOORS .....	91
• # 800 FRAMELESS BEVELED BI-PASS MIRROR WARDROBE DOORS .....	92, 93
WASHER KITS .....	78
• HANDLE WASHER KIT .....	78
• HANDLE / TOWEL BAR WASHER KIT .....	78
VERY HIGH BOND TAPE (VHB) .....	84
VINYL: 3/8" WBS EZ-HEADER GLAZING VINYL .....	67
WBS GLASS CLEANER .....	84

WITH A SPECIAL THANKS TO OUR CUSTOMERS

DON'S MOBILE GLASS  
 MODESTO, CA  
 DONSMOBILEGLASS.COM  
 &  
 VDM GLASS  
 SACRAMENTO, CA  
 (916) 371-6500

# STANDARD UNITS

## STANDARD UNITS

**REQUEST FOR:**

- Quote   
 Order



WARDROBE & BATH  
SPECIALTIES

Phone (209) 523-2094  
(800) 540-4085

Fax (800) 725-0868  
(209) 544-7115

email requests to:  
info@wardrobeandbath.com

Date: _____ Company Name: _____ City: _____ P.O./Job Name: _____ Phone#: _____ Fax#: _____ Email: _____ Contact Person: _____	<table border="0"> <tr> <td style="vertical-align: top;"> <b>FINISH:</b>  <input type="checkbox"/> Chrome  <input type="checkbox"/> B.Nickel  <input type="checkbox"/> Brass  <input type="checkbox"/> Bronze                 </td> <td style="vertical-align: top;"> <b>GLASS TYPE:</b>  <input type="checkbox"/> Clear  <input type="checkbox"/> Reed  <input type="checkbox"/> Rain  <input type="checkbox"/> Obscure  <input type="checkbox"/> KD Only  <input type="checkbox"/> Other: _____                 </td> <td style="vertical-align: top;"> <b>OTHER:</b>  <u>Glass Coating:</u>                  Yes No  <input type="checkbox"/> <input type="checkbox"/>  <u>Micro Fiber Cloth:</u>                  Yes No  <input type="checkbox"/> <input type="checkbox"/>  <u>Fillers:</u> Yes No  <input type="checkbox"/> <input type="checkbox"/>                  Size: _____             </td> </tr> </table>	<b>FINISH:</b> <input type="checkbox"/> Chrome <input type="checkbox"/> B.Nickel <input type="checkbox"/> Brass <input type="checkbox"/> Bronze	<b>GLASS TYPE:</b> <input type="checkbox"/> Clear <input type="checkbox"/> Reed <input type="checkbox"/> Rain <input type="checkbox"/> Obscure <input type="checkbox"/> KD Only <input type="checkbox"/> Other: _____	<b>OTHER:</b> <u>Glass Coating:</u> Yes No <input type="checkbox"/> <input type="checkbox"/> <u>Micro Fiber Cloth:</u> Yes No <input type="checkbox"/> <input type="checkbox"/> <u>Fillers:</u> Yes No <input type="checkbox"/> <input type="checkbox"/> Size: _____
<b>FINISH:</b> <input type="checkbox"/> Chrome <input type="checkbox"/> B.Nickel <input type="checkbox"/> Brass <input type="checkbox"/> Bronze	<b>GLASS TYPE:</b> <input type="checkbox"/> Clear <input type="checkbox"/> Reed <input type="checkbox"/> Rain <input type="checkbox"/> Obscure <input type="checkbox"/> KD Only <input type="checkbox"/> Other: _____	<b>OTHER:</b> <u>Glass Coating:</u> Yes No <input type="checkbox"/> <input type="checkbox"/> <u>Micro Fiber Cloth:</u> Yes No <input type="checkbox"/> <input type="checkbox"/> <u>Fillers:</u> Yes No <input type="checkbox"/> <input type="checkbox"/> Size: _____		

<p align="center"><b><u>PIVOT/CONTINUOUS HINGE DOOR UNIT</u></b></p> <table border="0"> <tr> <td style="vertical-align: top;"> <b>Type of Unit:</b>  <input type="checkbox"/> P-1500 (Frameless)  <input type="checkbox"/> P-2000 (Frameless)  <input type="checkbox"/> P-2500 (Frameless)  <input type="checkbox"/> P-3000 (Framed)                 </td> <td style="vertical-align: top;"> <b>Component:</b>  <input type="checkbox"/> P-45 (2/3 Neo Angle)  <input type="checkbox"/> P-90 (Return Panel)  <input type="checkbox"/> P-90I (Inline &amp; Return Panel)  <input type="checkbox"/> P-135 (Neo Angle)  <input type="checkbox"/> P-180 (Inline panel)                 </td> <td style="vertical-align: top;"> <b>Hinge Side:</b>  <input type="checkbox"/> Hinge Right  <input type="checkbox"/> Hinge Left                 </td> </tr> </table>	<b>Type of Unit:</b> <input type="checkbox"/> P-1500 (Frameless) <input type="checkbox"/> P-2000 (Frameless) <input type="checkbox"/> P-2500 (Frameless) <input type="checkbox"/> P-3000 (Framed)	<b>Component:</b> <input type="checkbox"/> P-45 (2/3 Neo Angle) <input type="checkbox"/> P-90 (Return Panel) <input type="checkbox"/> P-90I (Inline & Return Panel) <input type="checkbox"/> P-135 (Neo Angle) <input type="checkbox"/> P-180 (Inline panel)	<b>Hinge Side:</b> <input type="checkbox"/> Hinge Right <input type="checkbox"/> Hinge Left	<p align="center"><b><u>BI-PASS UNIT</u></b></p> <table border="0"> <tr> <td style="vertical-align: top;"> <b>Type of Unit:</b>  <input type="checkbox"/> TE/SE-1000 (3/16" Glass)  <input type="checkbox"/> TE/SE-2000 (1/4" Glass)  <input type="checkbox"/> TE/SE-3000 (3/16" Glass)  <input type="checkbox"/> TE/SE-4000 (3/16" Glass)  <input type="checkbox"/> TE/SE-5000 (5/16" Glass)                 </td> <td style="vertical-align: top;"> <b>Panels:</b>  <input type="checkbox"/> A (Bi-Pass and Inline Panel)  <input type="checkbox"/> B (Bi-Pass with 2 Inline Panels)  <input type="checkbox"/> C (Bi-Pass with Return Panel)  <input type="checkbox"/> D (Bi-Pass with Panels at 135°)                 </td> </tr> </table>	<b>Type of Unit:</b> <input type="checkbox"/> TE/SE-1000 (3/16" Glass) <input type="checkbox"/> TE/SE-2000 (1/4" Glass) <input type="checkbox"/> TE/SE-3000 (3/16" Glass) <input type="checkbox"/> TE/SE-4000 (3/16" Glass) <input type="checkbox"/> TE/SE-5000 (5/16" Glass)	<b>Panels:</b> <input type="checkbox"/> A (Bi-Pass and Inline Panel) <input type="checkbox"/> B (Bi-Pass with 2 Inline Panels) <input type="checkbox"/> C (Bi-Pass with Return Panel) <input type="checkbox"/> D (Bi-Pass with Panels at 135°)
<b>Type of Unit:</b> <input type="checkbox"/> P-1500 (Frameless) <input type="checkbox"/> P-2000 (Frameless) <input type="checkbox"/> P-2500 (Frameless) <input type="checkbox"/> P-3000 (Framed)	<b>Component:</b> <input type="checkbox"/> P-45 (2/3 Neo Angle) <input type="checkbox"/> P-90 (Return Panel) <input type="checkbox"/> P-90I (Inline & Return Panel) <input type="checkbox"/> P-135 (Neo Angle) <input type="checkbox"/> P-180 (Inline panel)	<b>Hinge Side:</b> <input type="checkbox"/> Hinge Right <input type="checkbox"/> Hinge Left				
<b>Type of Unit:</b> <input type="checkbox"/> TE/SE-1000 (3/16" Glass) <input type="checkbox"/> TE/SE-2000 (1/4" Glass) <input type="checkbox"/> TE/SE-3000 (3/16" Glass) <input type="checkbox"/> TE/SE-4000 (3/16" Glass) <input type="checkbox"/> TE/SE-5000 (5/16" Glass)	<b>Panels:</b> <input type="checkbox"/> A (Bi-Pass and Inline Panel) <input type="checkbox"/> B (Bi-Pass with 2 Inline Panels) <input type="checkbox"/> C (Bi-Pass with Return Panel) <input type="checkbox"/> D (Bi-Pass with Panels at 135°)					

<b>WARDROBE UNITS</b>					
<b>#100</b>	<b>#200</b>	<b>#300</b>	<b>#400</b>	<b>#500</b>	<b>#800</b>
Chrome      White Bronze Brass        B.Nick Satin Gold	White B.Nick	White B.Nick	White B.Nick	White B.Nick	Chrome      White Bronze Brass        B.Nick Satin Gold

Special Instructions: \_\_\_\_\_

Drawing of Unit: \_\_\_\_\_ Measurements are:  Centerline  Outside

[www.wardrobeandbath.com](http://www.wardrobeandbath.com)

**HEAVY UNITS**



**WARDROBE & BATH SPECIALTIES**

Phone (209) 523-2094  
(800) 540-4085

Fax (800) 725-0868  
(209) 544-7115

email requests to:  
info@wardrobeandbath.com

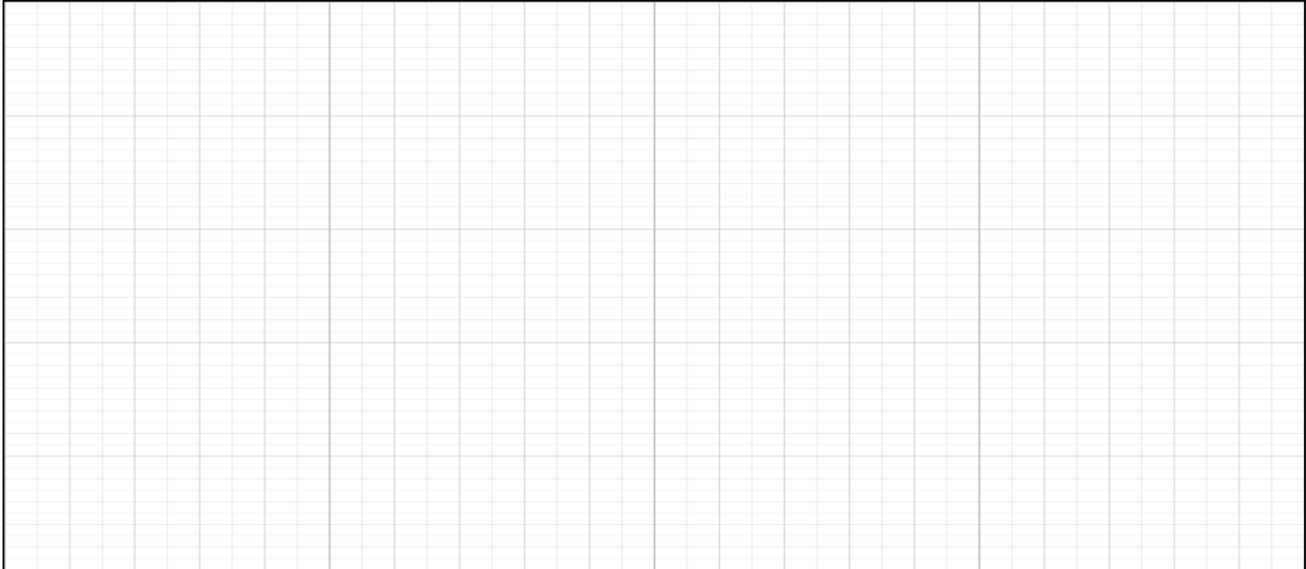
**REQUEST FOR:**

- Quote  
 Order

Date: _____ Company Name: _____ City: _____ P.O./Job Name: _____ Phone#: _____ Fax#: _____ Email: _____ Contact Person: _____		<b>GLASS TYPE:</b> <input type="checkbox"/> Clear <input type="checkbox"/> Gluechip <input type="checkbox"/> Rain <input type="checkbox"/> Starphire <input type="checkbox"/> Barok <input type="checkbox"/> 1/2" Clear <input type="checkbox"/> Other: _____		<b>OTHER:</b> <u>Glass Coating:</u> Yes No <input type="checkbox"/> <input type="checkbox"/>  <u>Micro Fiber Cloth:</u> Yes No <input type="checkbox"/> <input type="checkbox"/>			
<b>TYPE OF UNIT:</b> <input type="checkbox"/> H-5000 (Single Door) <input type="checkbox"/> H-90 (Door & Return Panel) <input type="checkbox"/> H-90 I (Door, Inline & Return Panel) <input type="checkbox"/> H-180 (Door & Inline Panel) <input type="checkbox"/> H-135 (Door with Panels at 135°) <input type="checkbox"/> Bath Screen		<b>HINGE SIDE:</b> <input type="checkbox"/> Hinge Right <input type="checkbox"/> Hinge Left		<b>FINISH:</b> <input type="checkbox"/> Chrome <input type="checkbox"/> Brushed Nickel <input type="checkbox"/> Polished Brass <input type="checkbox"/> Bronze <input type="checkbox"/> Antique Brass <input type="checkbox"/> Polished Nickel <input type="checkbox"/> Satin Nickel <input type="checkbox"/> Other: _____		<b>HARDWARE:</b> <input type="checkbox"/> Hinges: _____ <input type="checkbox"/> Standard Clips (Notched glass) <input type="checkbox"/> U-Channel <input type="checkbox"/> Polycarbonates: _____ Please specify type <input type="checkbox"/> Other: _____ Please specify type	

Special Instructions: \_\_\_\_\_

Drawing of Unit: \_\_\_\_\_ Measurements are:  Centerline  Outside



[www.wardrobeandbath.com](http://www.wardrobeandbath.com)

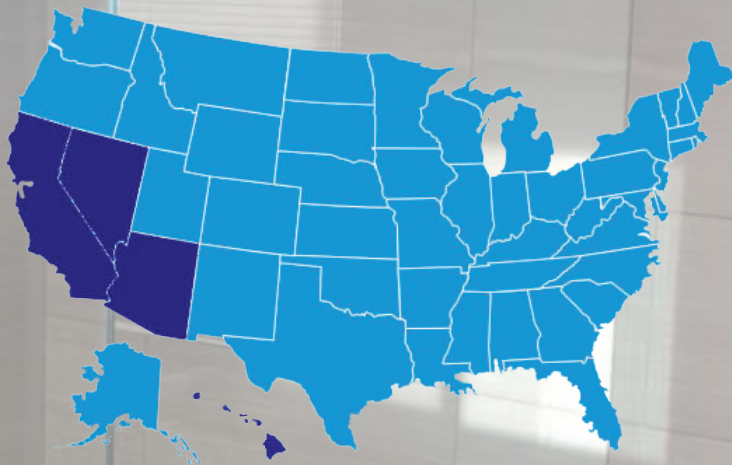
EST.

# 1983

SHOWER DOORS | WARDROBE DOORS | HEAVY GLASS | HARDWARE & ACCESSORIES



WARDROBE & BATH  
SPECIALTIES



SERVING OUR CUSTOMERS IN  
CALIFORNIA | NEVADA | ARIZONA | HAWAII

WBS12020



3800 FINCH ROAD | MODESTO, CA 95357

INFO@WARDROBEANDBATH.COM | P (800) 540-4085 | F (800) 725-0868

WARDROBE & BATH SPECIALTIES | WARDROBEANDBATH.COM